

PIONEER

CONNECT

JULY 29, 2017

**I WONDER
WHAT
THE BIBLE
SAYS
ABOUT**

?

Ben Martin · July 29
Pioneer Memorial Church
9:00 & 11:45 AM

WE WORSHIP • PAGE 6 | WE WORSHIP 2 • PAGE 9

WELCOME

to Pioneer




What have you come seeking today? Are you thirsty for a connection with God? If so you are not alone. "These things I remember as I pour out my soul: how I used to go to the house of God under the protection of the Mighty One with shouts of joy and praise among the festive throng" (Psalm 42:4 NIV).

While the writer here is desperate to connect with God, he remembers happier days. He felt very close to God in joyful times and in community with others. No matter in what state we find ourselves today, God is ready and willing to hear us and revive us.

Let's come together, remembering that it is His love that has drawn us here. We hope and pray that you'll experience God's presence through the prayers, song and messages of today, and especially with one another as we worship Him, "the help of our countenance and our God."

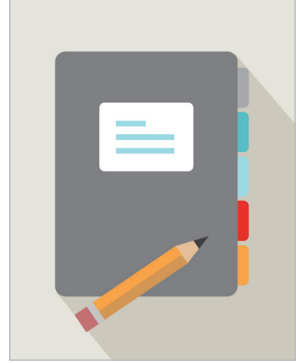
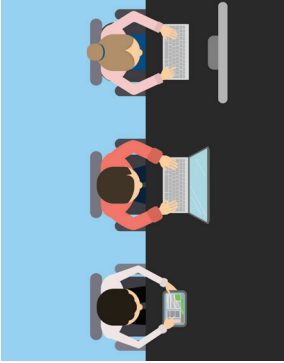
We're glad you are here. Welcome.

–Sabine Vatel

 PIONEER MEMORIAL CHURCH 8655 UNIVERSITY BOULEVARD, BERRIEN SPRINGS, MI 49103		
OFFICE HOURS Monday – Thursday (8 to 5) • Friday (8 to 12)		PHONE – 269.471.3133 FAX – 269.471.6152
LIVE STREAMING www.pmchurch.org Sabbath 11:45 AM	ONLINE www.pmchurch.org www.newperceptions.tv	RADIO WAUS – 90.7 FM Sabbath 11:30 AM
 NOMINATING REPORT Scan this code to view the most recent Nominating Committee Report.		 FIND A SABBATH SCHOOL

FIND IT HERE

CONNECT • GROW • SERVE • GO



4

PIONEER LIFE
It Takes a Team

8

SABBATH SCHOOL
Old Testament Faith

12

MEMBERSHIP TRANSFERS

6

WE WORSHIP
9:00 AM Service

9

WE WORSHIP 2
11:45 AM Service

13

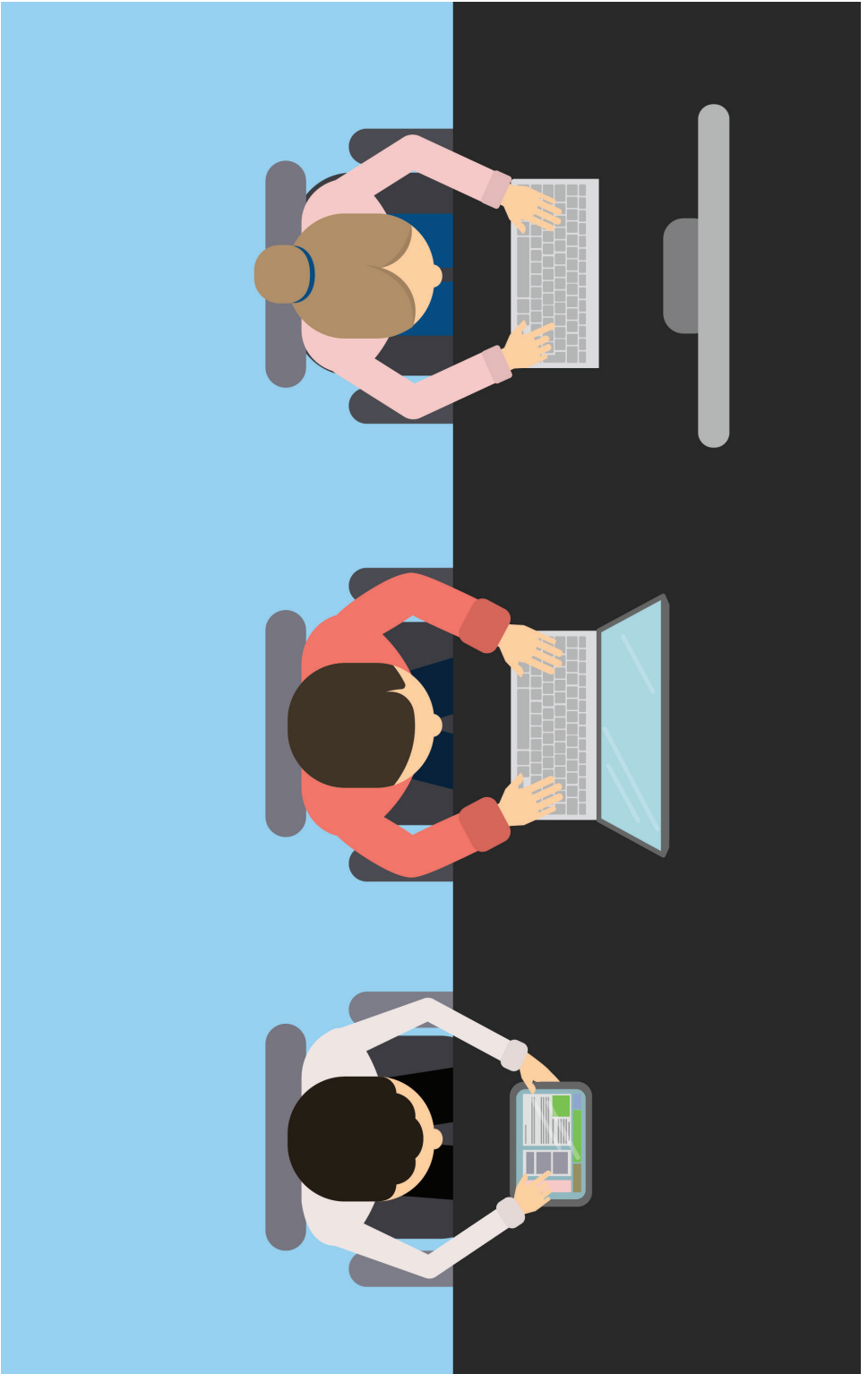
CONTACTS

10

ANNOUNCEMENTS

14

SABBATH SCHOOL DIRECTORY



IT TAKES A TEAM

BY RICHARD PARKE

Because Pioneer Memorial Church is a campus church, we not only have local members, but included in that membership are those passing through as they seek higher education. We are blessed to be able to experience the sharing of their gifts and talents, as faithful servants to Christ, while they are here.

Teams are important to help balance the load. One of our sustaining volunteer ministries here at Pioneer is the Media Team. We continually maintain a crew of approximately fifty people throughout the school semester, many of whom stick around for much of the summer months. All are committed to using media to share the love of Jesus through our local television ministry.

We also employ a small team to help with the day-to-day tasks throughout the week. This spring Pioneer hired a new Assistant Media Director, Gaddiel Zelaya Martinez. Gaddiel joins us as a recent Andrews graduate, with a Bachelor of Arts, concentrating in Broadcast Journalism. He most enjoys creative storytelling through video and still photography. Gaddiel says he doesn't prepare his shots only to make them look good, but enjoys being able to forget the technical and focus on "evoking a mood that communicates a message and tells a compelling a story." When asked why he accepted the position here at Pioneer, Gaddiel said it was the "right fit" for him and that it is a "great way to continue to stay active in ministry, while receiving practical training." He knows God wants

him to stay close to His church and this is a great opportunity to do just that.

We are also privileged to have our own in-house Graphic Designer, Rachele Offenback. She provides us our weekly bulletin, poster and website artwork, as well as other design projects, like our GROW Group catalog. Rachele has a Bachelor of Arts degree, concentrating in Graphic Design and most enjoys layout in design. Troy Homenchuk is filling in for Rachele while she is on maternity leave. Troy currently serves as an instructor in the School of Architecture here at Andrews University. He enjoys working in the creative field, whether it be teaching or designing. He says he "feels at home wherever he can spread the Gospel" and we are glad to have him for this short time.

Ecclesiastes 9:10 says, "Whatever you do, do well" (NLT). A job well done gives us something we can be proud of, and a team helps us accomplish just that. Your continued financial support helps us keep this creative team together. We look forward to continuing to serve you in the future. ■

Richard Parke is the director of Media Ministries here at PMC.

SUPPORT THIS MINISTRY

Please indicate
"PMC Operating Expense"
on your tithe envelope.

WE WORSHIP

CONNECT • GROW • SERVE • GO

Opening Voluntary *Praise to the Lord the Almighty (BWV 650) • J. S. Bach*

Introit *Turn Your Eyes Upon Jesus • Helen Lemmel*

Call to Worship Sabine Vatel

Listen to my words, Lord,
**consider my lament. Hear my cry for help, my King and my God,
for to you I pray.**

In the morning, Lord, you hear my voice; in the morning I lay my requests
before you and wait expectantly.

Doxology *Praise God, From Whom All Blessings Flow • 2*

Invocation Ben Martin

Hymn of Praise *Lord of Creation • 320*

Congregational Prayer Sabine Vatel
Lord, Speak to Me • st. 1 of 541

Worship in Music *Be Thou My Vision / It Is Well With My Soul*

Tithes & Offerings Good News Farm
I'm Pressing On the Upward Way • Arr. Brenton Offenback

Children's Story Gabi Francisco

Scripture John 9:1-5 NRSV • Aron and Ruben Balorda

As he walked along, he saw a man blind from birth.

**His disciples asked him, "Rabbi, who sinned, this man or his
parents, that he was born blind?"**

Jesus answered, "Neither this man nor his parents sinned; he was born blind so
that God's works might be revealed in him.

**We must work the works of him who sent me while it is day; night is
coming when no one can work.**

As long as I am in the world, I am the light of the world."

Hymn of Preparation

There Is a Quiet Place • 503

Sermon

"I Wonder What the Bible Says About _____?" • Ben Martin

Hymn of Commitment

We Praise Thee With Our Minds • 642, melody of 250

Benediction

Closing Voluntary

Finale from Symphony No. 2 • Charles-Marie Widor

PRESIDING PASTOR: Sabine Vatel; ORGANIST: Brenton Offenback
WORSHIP IN MUSIC: John Weiss, bowed psaltery

MUSIC ALIVE

MUSIC AND MIND

We are told to "praise [God] with the psaltery and harp" (Psalm 150:3b, KJV). I Sam. 16 recounts David playing a "harp" for King Saul, the king being refreshed, made well, the evil spirit departing from him. Ellen White said, "Music is often perverted to serve purposes of evil, and it thus becomes one of the most alluring agencies of temptation. But, rightly

employed, it is a precious gift of God, designed to uplift the thoughts to high and noble themes, to inspire and elevate the soul." Certain song "has wonderful power. It has power to subdue rude and uncultivated natures; power to quicken thought...and to banish the gloom and foreboding that destroy courage and weaken effort" (Education 167, 168). ■

WE STUDY

CONNECT • GROW • SERVE • GO

Song Service	Jimmer Mun
Opening Song	<i>I Love to Tell the Story</i> • 457
Prayer	Jemuel Friars
Scripture	Natsayi Nembware
Welcome	Sinegugu Katenga
Mission Feature	Juli and Garry Blood
Offertory	<i>His Eye is on the Sparrow</i> • arr. Tom Fettke
Bible Study	"Old Testament Faith" • Classes
Theme Song	<i>Make Me a Blessing</i>

Make me a blessing; make me a blessing.
Out of my life may Jesus shine.
Make me a blessing; O Savior, I pray.
Make me a blessing; to someone today.

"Make Me a Blessing," Ira Bishop Wilson
©1924, Renewed 1952 Word Music, LLC; Used by Permission. CCLI License #392652

Benediction	Jimmer Mun
--------------------	------------

ORGANIST: Brenton Offenback
OFFERTORY: Lady Abigail Imperio, soprano

WE WORSHIP 2

CONNECT • GROW • SERVE • GO

As We Begin

Praise to the Lord the Almighty (BWV 650) • Johann Sebastian Bach

Praise

Shine Jesus Shine • I Love To Tell The Story • I Have Decided To Follow Jesus

Prayer

Sabine Vatel

Tithes & Offerings

I'm Pressing On the Upward Way • Arr. Brenton Offenback

Children's Story

Gabi Francisco

World Missions Institute Dedication

Worship in Music

Be Thou My Vision / It Is Well With My Soul

Sermon

"I Wonder What the Bible Says About _____?"

Ben Martin

Connect Card

We Praise Thee With Our Minds • 642, melody of 250

As We Depart

Finale from Symphony No. 2 • Charles-Marie Widor

WORSHIP COORDINATOR: José Bourget; ORGAN: Brenton Offenback
ACOUSTIC GUITAR: Michael Gibson; PIANO: Jonathan Constantine
VOCALS: Amyah Chatman, Jessica Link, Sinegugu Katenga
WORSHIP IN MUSIC: John Weiss, bowed psaltery

SUBMIT announcements by emailing bulletin@pmchurch.org or by going to www.pmchurch.org/announcements/submit. Requests must be received **Monday by 5:00 PM** for consideration.

NEXT WEEK'S OFFERING
Michigan Advance Partners

SUNSET TODAY • 9:09
SUNSET NEXT FRIDAY • 9:01

PIONEER PULPIT

| 08 • 05 |

JOHN WESLEY TAYLOR V

AU Baccalaureate

| 08 • 12 |

TAURUS MONTGOMERY

FINANCIAL FEATURE

GOOD NEWS FARM

The offering today goes to the Good News Farm, which is a greenery located on the campus of Great Lakes Academy. All of the fruits and vegetables the farm grows are Certified Organic. The farm provides a place for students to learn the values of hard work, and the money the students earn goes to their education. The farm also uses their Facebook page to share God's message through video lessons. Your support of the Good News Farm will benefit the ministry of Adventist education and help spread the good news of Jesus.

Family Vespers

TODAY • 8:00 PM
YOUTH CHAPEL

What would it look like if you could see God's agenda for your day? Join us for a presentation by Michael Gibson entitled "Living on God's Agenda," a fresh perspective on divine appointments and living everyday according to God's plan.

Keeping Us Safe

The Safety Committee would like to thank you for participating in last week's safety drill. They were able to identify some areas to continue to provide a safe experience for us as we worship together each week in this space. Share your thoughts and experience at www.pmchurch.org/safety-drill.

We Mourn

We mourn the loss of our dear member, Marilyn Christian, who passed away on July 17. With her friends and family we look forward to the resurrection morning. "Even so, come Lord Jesus."

RMES Work Bee

JULY 30 • 8:00 AM TO 3:00 PM
RUTH MURDOCH ELEMENTARY
SCHOOL

Parents, volunteers, and supporters are invited to join us as we beautify our building and grounds for the new school year.

What an Amazing Gift

On July 23 twenty-one PMC couples married for between 50 to 70 years met together to praise God for such an amazing gift. Pastor Don Dronen offered the Prayer of Praise which included the recognition of God's direction in bringing each couple together. They had the opportunity to share their wedding picture, proposal story, and make prayer requests.

Health Tent at Berrien County Youth Fair

Every year the local Adventist churches host the Health Tent at the Berrien County Youth Fair. Thousands of people visit during Fair Week (August 14-19 this year) to learn about healthful living. You can be part of it! Sign up for a time slot (or more) at www.HealthTent.org. Learn more about the new format for the Health Tent on that site, and also how you can support it with your donations.

FLAG Camp

NOW THROUGH AUGUST 3
PATHFINDER BUILDING

FLAG Camp is a Christian day camp where children grades K-8 enjoy quality programs. Whether you plan to send your child every day, or just a day here and there throughout the summer, FLAG Camp is a great choice when it comes to affordable childcare. For registration or more info visit www.pmchurch.org/flagcamp.

Family Prayer Needs

If you have a prayer request or change to the Family Prayer Needs list, please contact the church clerk, Janna Quetz (clerk@pmchurch.org, or call 471.3133).

District 9 Family Camp

SEPTEMBER 1-4
CAMP AU SABLE

The annual District 9 Family Camp is just around the corner! Applications are available online at <http://districtnine.wix.com/> or at the PMC receptionist's desk for those who are unable to obtain them online. Completed applications may be submitted to Claudia Sowler beginning at noon on July 23. Reservations must be made by noon on Sunday, August 13. For questions, please contact Ric Streeleman at 269.208.7172. Make your reservations as soon as possible. We look forward to seeing you there where you will be physically and spiritually blessed!

Adventurer Leaders/Teacher Needed

The PMC Adventurer Club is looking for a dynamic, interactive and creative teacher to lead our Little Lambs class (4 year-olds) for the 2017-2018 school year. In addition, we are also in need of assistant leaders to help in various leadership areas. If interested, please contact us at adventurers@pmchurch.org.

PMC Greeters Needed!

The PMC Greeter Team needs your warm smile and friendly "Welcome" to serve as a greeter. You are the first introduction to our worship on Sabbath. We have many openings. Contact Bonnie Perry by phone, text or e-mail (269.473.1005; 312.953.5871; bperry@sbcsc.k12.in.us).

More Announcements

For more PMC and community announcements, please visit our website at www.pmchurch.org/announcements.

The Institute of World Mission team and the 28 missionary families attending the 2017 Andrews Mission Institute want to thank the Pioneer Memorial Church and Andrews University for hosting them during their three-week training program.

Thank you also for giving your tithes and offerings that support these families and the hundreds of others who serve in the General Conference mission program around the world. Please remember them in your prayers.

Jesse, Sheila, & Nikki Jessica Agra from the Philippines serving in Zimbabwe • Jose Aragones & Pamela Catalan from Argentina serving in Kyrgyzstan • Corazon & Jovicto Banaga from the Philippines serving in Kenya • Elidon, Dranica, Amantia, Ester, & Era Bardhi from Albania serving in Vietnam • Gary, Juli, Michael, & Jason Blood from the USA serving GC Auditing Services • Stephen Blosser from the USA serving with Asia Aid • Leendert & Mary Louise Brouwer from the Netherlands & Canada serving in Peru • Seung Kyo Cho & Sun Hee Kim from S Korea serving in the Philippines • Roy Cortez from the USA serving GC Auditing Services • Jerry Peter, Izabel, & Lys Da Silva from Brazil/Canada serving in Tunisia • Lincoln & Sandra Edwards from the USA serving in Jamaica • Jemuel, J Evelyn, & Jyle Frias from the Philippines serving in Botswana • Damon, Danae, Bryce, & Peyton Gilliam from the USA serving in Egypt • Inzune, Nancy, Caleb, Mary, & Martha Hwang from USA serving in Rwanda • Makhosi, Gugu, Sisaskhe, Similosakhe, & Musawakhe Moyo from Zimbabwe serving in Kenya • Pardon & Judith Mwansa from the USA serving in Zambia • Natsayi Nembaware from Zimbabwe serving in the USA • Joel, Jolie, Franz, Emmanuelle, & Uriel Nyanding from Cameroon serving in Burundi • Verna, Gemini, Beth, & Mikguil Peduche from Philippines serving in Zambia • Alvin & Leila Rocero from USA serving in Pakistan • Leroy, Ruby, Joshua Ruhupatty from Indonesia serving in the Philippines • Richard, Paula, & Richla Sabuin from Indonesia serving in S Korea • Emilio Sobrino, Ischel Ruiz Gama, Eleonor & Emilio from Mexico serving in Ukraine • Wilson, Danika, Levi & Ever Thomas from the USA serving in Malawi • Pradeep Arthur, Nola, & Tarun Tudu from India serving in Thailand • Ron & Shawna Vhymeister from the USA serving in Lebanon • Kimberly Westfall from the USA serving with GC Auditing • Jacqueline Wosinski from Switzerland serving in Rwanda.

MEMBERSHIP TRANSFERS • SECOND READING

| TRANSFERS IN |

OKIOMA, Ezra
ZELAYA MARTINEZ, Gaddiel

| FROM |

Nairobi Central SDA Church
Asociación Paracentral Salvadoreña

| TRANSFERS OUT |

ALGANDAR, AmadaSusana
BENITEZ-CAMPOS, Grecia
GOMEZ, Jamie
OBINCHU, Fenades
ROMAN, Raluca
RUSK, Steven
WHITE, Reuel

| TO |

Spanish • Berrien Springs, MI
Central Spanish • LA,CA
Spanish • Berrien Springs, MI
Dallas New Life • Richardson, TX
Fuerth, Germany
Marietta, GA
Farmville, VA

| PASTORS |

Chaplain / Pioneer

José Bourget • 471.6254
bourget@pmchurch.org

Discipleship / GROW Groups

Sabine Vatel • 471.6153
vatel@pmchurch.org

Harbor of Hope

Taurus Montgomery • 269.210.6155
montgomery@pmchurch.org

Lead Chaplain

June Price • 471.6282
juneprice@andrews.edu

Lead Pastor

Dwight K. Nelson • 471.3134
nelson@pmchurch.org

Pastoral Care

Don Dronen • 471.3133
dronen@pmchurch.org

Stewardship

Sharon Terrell • 471.6151
terrell@pmchurch.org

This Generation Evangelism

Rodlie Ortiz • 471.6154
ortiz@pmchurch.org

Youth Ministries

Ben Martin • 471.6176
martin@pmchurch.org

Media Ministries

Richard Parke • 471.3246
parke@pmchurch.org

Music

Kenneth Logan • 471.3231
logan@pmchurch.org

| STAFF |

Admin. Assistant

Lailane Legoh • 471.3543
legoh@pmchurch.org

Admin. Assistant / Facilities / Clerk

Janna Quetz • 471.3133
quetz@pmchurch.org

Assistant Media Director

Gaddiel Zelaya Martínez • 471.3678
zelaya@pmchurch.org

Assistant Treasurer

JoAnn Siagian • 471.7656
siagian@pmchurch.org

Bible Work Coordinator

Tabitha Umali • 471.3550
umali@pmchurch.org

Executive Assistant

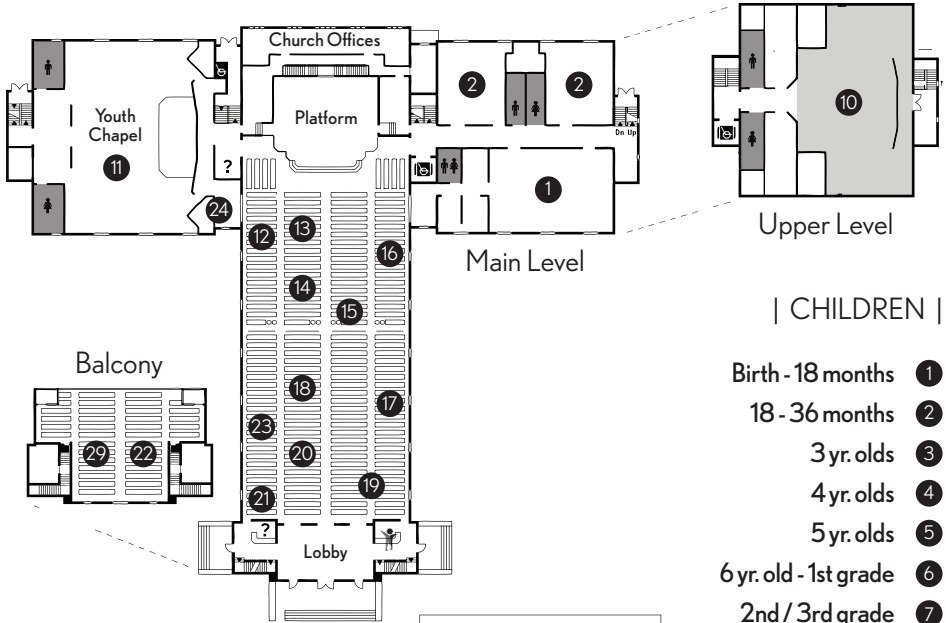
Claudia Sowler • 471.3134
sowler@pmchurch.org

Graphic Designer

Rachelle Offenback • 471.3647
bulletin@pmchurch.org

Maintenance

Larry White • 471.3649
white@pmchurch.org



| CHILDREN |

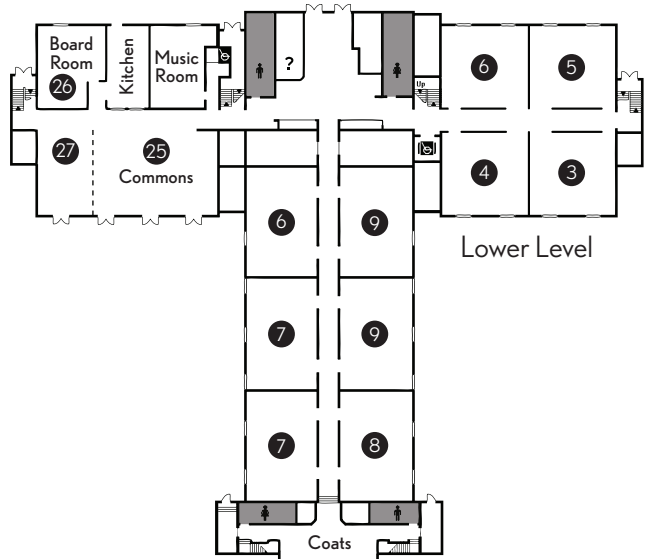
- Birth - 18 months ①
- 18 - 36 months ②
- 3 yr. olds ③
- 4 yr. olds ④
- 5 yr. olds ⑤
- 6 yr. old - 1st grade ⑥
- 2nd / 3rd grade ⑦
- 4th grade ⑧
- 5th / 6th grade ⑨
- Earliteen ⑩
- Youth ⑪

| ADULT |

- ⑫ Group 1
- ⑬ Group 2 (Portuguese/Brazilian)
- ⑭ Group 3
- ⑮ Group 4 (Yugoslavian)
- ⑯ Group 5
- ⑰ Group 6
- ⑱ Group 7
- ⑲ Group 8
- ⑳ Group 9 (Spanish)
- ㉑ Group 10
- ㉒ Group 11 (Balcony)
- ㉓ Group 12 (French)
- ㉔ Conference Room
- ㉕ Something In Common
- ㉖ Young Adults
- ㉗ SDA Beliefs

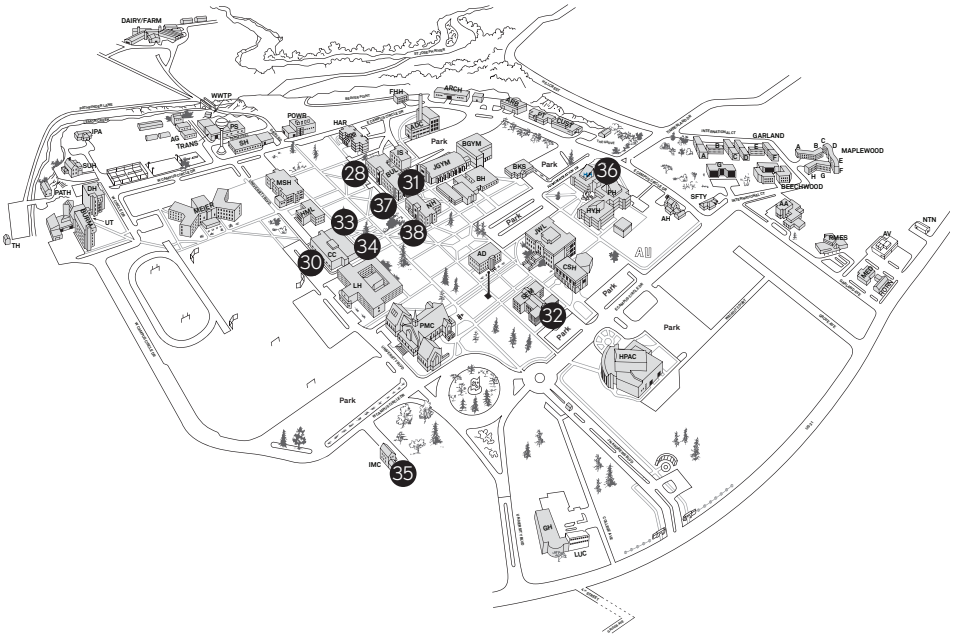
| KEY |

- ? Welcome Centers
- ⬇ Elevators
- ♿ Restrooms
- 👤 Children's Activities & Lending Library



Lower Level

Andrews University Campus Map



| COLLEGIATE |

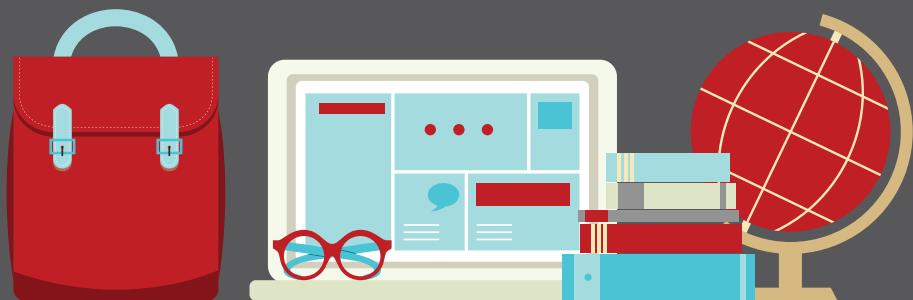
- 28 H&M (Hispanic - Religion Amphitheater)
- 29 People on the Move (PMC)
- 30 University Sabbath School (Dining Services)
- 31 Compass Sabbath School (Buller - Religion Dept.)

| SEMINARY |

- 32 N108 (Collegiate)
- N110
- N120 (New Life Church Choir)
- N150
- N211 (Small Group)
- N235
- N310 (Digging Deep)
- N335 (Spanish)
- S340 (Upper Room)

| ADULT @ AU |

- 33 Main Lounge
- 34 Faculty Lounge
- 35 Back to Basics
- 36 Living Word Fellowship
- 37 Current Events (Nethery - 134)
- 38 Bible Journey (Nethery - 143)



JOIN OUR FAMILY

You will be blessed by what Andrews Academy has to offer



We seek to inspire our students to think deeply, live fully, serve unselfishly and to honor God completely.



ANDREWS ACADEMY

8833 Garland Ave., Berrien Springs, MI 49104

269.471.3138 • academy@andrews.edu

School starts August 21

Registration Day is August 16

www.andrews.edu/aa | Click on "apply now"