

PIONEER CONNECT

MARCH 18, 2017

Significance

A person stands in a field of tall grass, their back to the camera with arms outstretched towards a vast, starry night sky. A vibrant nebula with shades of blue, purple, and pink is visible in the upper half of the image, creating a sense of awe and connection to the universe.

WE WORSHIP • PAGE 8 | WE WORSHIP 2 • PAGE 11

WELCOME

to Pioneer

I remember when I first started attending Pioneer Memorial Church as a seminary student. I was struck by the size of the church and by how many people attended. Yes, it's a large church, and that sometimes can be intimidating. But after coming back and now serving on the pastoral team, I've learned there's a secret to making a large congregation feel smaller and more intimate: getting involved. There are several easy ways to do this. First, there are GROW groups. I'm currently a part of the House of Prayer evening GROW group. There's something about joining fifty or so other people in prayer and singing. It bonds and connects you. Come and join us! You can also volunteer on a ministry team through the Connect Card. This instantly connects you to a small group of like-minded people who serve and have fun together.

So is this your first time here? We welcome you. And know that, yes, there are ways to make a large church seem a lot smaller and more intimate.

—Rodlie Ortiz



PIONEER MEMORIAL CHURCH

8655 UNIVERSITY BOULEVARD, BERRIEN SPRINGS, MI 49103

OFFICE HOURS

Monday – Thursday (8 to 5) • Friday (8 to 12)

PHONE – 269.471.3133

FAX – 269.471.6152

LIVE STREAMING

www.newperceptions.tv
Sabbath 11:45 AM

ONLINE

www.pmchurch.org
www.newperceptions.tv

RADIO

WAUS – 90.7 FM
Sabbath 11:30 AM



NOMINATING REPORT

Scan this code to view the most recent Nominating Committee Report.



FIND A SABBATH SCHOOL

FIND IT HERE

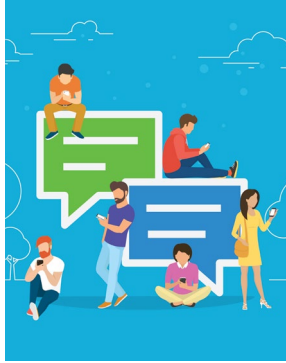
CONNECT • GROW • SERVE • GO



4

FAMILY FINANCES

Help Repair Our
Leaky Roof!



8

WE WORSHIP

9:00 AM Service



12

ANNOUNCEMENTS

6

PIONEER LIFE

Care to Chat:
Digital Evangelism

10

SABBATH SCHOOL

Grieving and Resisting
the Spirit

15

CONTACTS

11

WE WORSHIP 2

11:45 AM Service

HELP REPAIR OUR LEAKY ROOF!

BY SHARON TERRELL

Perhaps you are a VERY sound sleeper and were not awakened by the high winds that raced through Berrien Springs on the evening of March 7. Though a High Winds Alert had been broadcast, many were surprised at the resulting damage from sustained wind gusts between 50 and 60 mph.

Maybe you saw tree limbs and other debris flying through the air. Or, as was the situation at our home, your garbage cans took off down the street! I have heard several stories about many shingles taking flight as well!

Here at PMC, we have evidence of "shingle flight." A number of shingles left our roof and I am told, some left as "families"—more than one sheet leaving together. Our Maintenance Supervisor, Larry White, hurriedly purchased supplies for beginning the most-needed repairs and spent last Thursday on the roof, tearing off damaged shingles, replacing underlayment and securing new shingles. Because of the forecast for rain mixed with snow by the weekend, he was under pressure to "batten down the hatches"—or "batten down the shingles."

Many of you are aware that we already had "leaky roof" problems. (You've seen the buckets in the hallways and on the platform and plastic covers over the cameras and organ.) This is why the Building Committee has, as one of its priorities this budget year, to address repair or replacement of our church roof.

Unfortunately our Building Maintenance reserves cannot cover this large expense. The source for any reserve funds is "extra" funds available in the operating fund at the end of a budget year, which can be transferred, if approved, to one of the reserves.

Those of you who regularly read the Family Finance reports know that we have not had extra operating funds for a while, as our PMC Operating offerings have been down by comparison with previous years.

Bottom Line: We need your help with whatever you can give to "Roof Repair." Some can give more than others and if you are in the category of being able to give \$1000 this year, would you please? That is, if there are 300 donors who are able to give \$1000, this would mean we could replace (not just repair) our roof and have funds left to replace the blue carpet in the Sanctuary, which is not only worn, but has become a tripping hazard. Thank you to all for giving what you can! ■

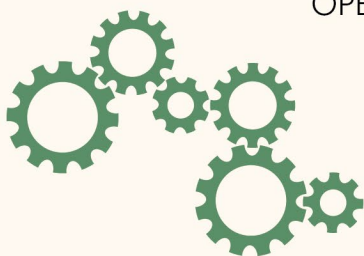
Sharon Terrell is the pastor of Stewardship here at PMC.

pioneer memorial church FAMILY FINANCES

As of February 28, 2017

Includes February online giving

OPERATING FUND



LINE 2 IN YOUR TITHE ENVELOPE

GOAL TO-DATE	97,696
RECEIVED TO-DATE	79,724
RECEIVED TO-DATE 2016	76,122

CHRISTIAN EDUCATION

LINE 3 IN YOUR TITHE ENVELOPE

GOAL TO-DATE	31,584
RECEIVED TO-DATE	23,104
RECEIVED TO-DATE 2016	21,760



MASTER PLAN OF EVANGELISM



LINE 5 IN YOUR TITHE ENVELOPE

GOAL TO-DATE	20,768
RECEIVED TO-DATE	12,468
RECEIVED TO-DATE 2016	12,408

CARE TO CHAT

DIGITAL EVANGELISM

BY RICHARD PARKE

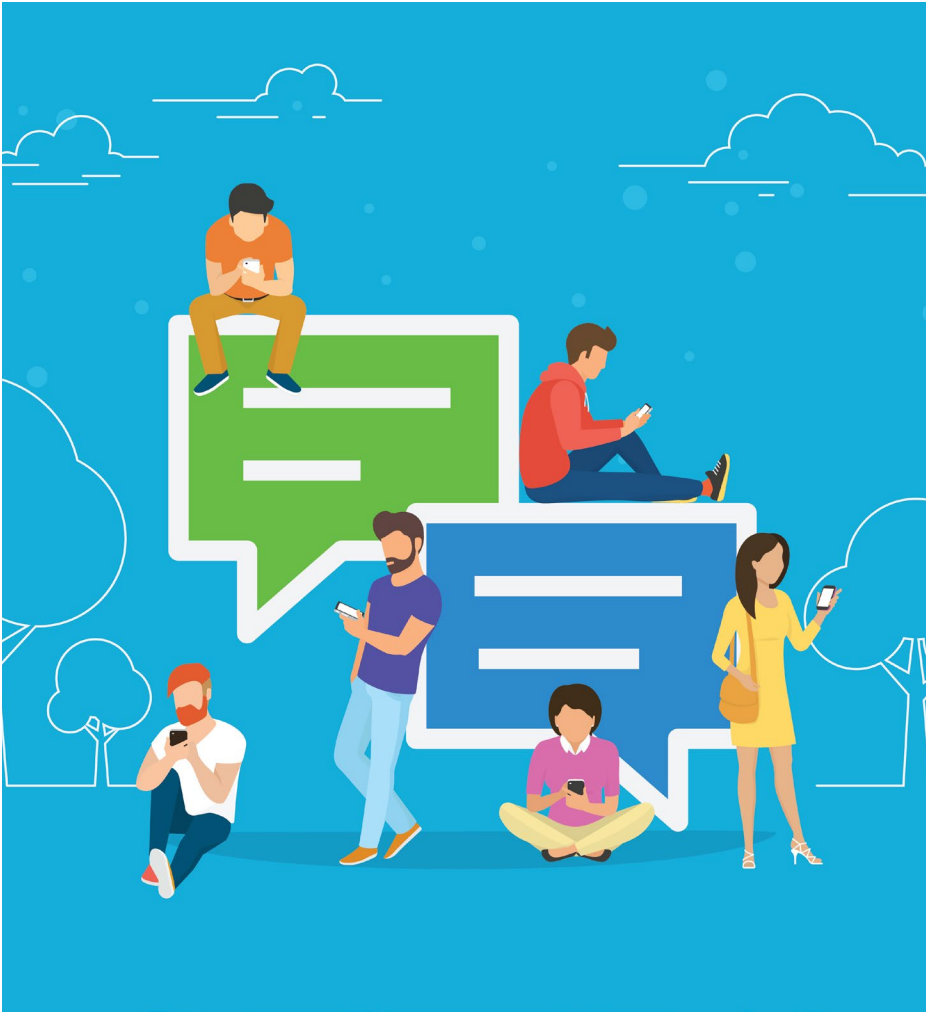
We are social creatures! Even before media platforms such as Facebook, Twitter, and Instagram (or as I call it, “Instantgram”) had us sharing photos online, tagging friends, and “liking” those funny cat photos, we were social. We experience it in many forms; even introverts experience community in their own way. What makes us social comes down to our need for love and acceptance. Jesus paints a perfect picture of what it means to be accepted through His love. He then calls us to also “love one another” (*John 13:34-35*). There are many ways we can build community here at Pioneer (GROW Groups, church social events, and Visitors’ Potluck are a few examples). The community that happens with our local congregation is an integral part of why a church exists. There are also ways to extend that local community outside of the walls of a church, if we are open to experiment. One of those is through live streaming.

Pioneer has been live streaming its worship service for several years now and, more recently, began engaging in digital congregation. This year we began experimenting with ways to facilitate conversation online during our second worship service each Sabbath. Did you know that there are over a thousand people outside our local community who are reached, many of whom worship with us on a regular basis (if you’d like some of those statistics, email producer@pmchurch.tv

and I’d be happy to share them with you). Our single goal is to find ways to encourage conversation, and form a community of believers with these recurring guests—it’s an entirely new audience. This offers a bi-directional communication rather than static viewing. The hope is that now, rather than just being on the other side of the glass looking in, people are able to be engaged in a form of community. Our teams invite viewers to share a testimony, a praise, or prayer request, or something meaningful from their week. We also encourage post-sermon conversation during the week. We find it an honor to share in the power of prayer and conversation with our new friends.

We currently offer two engagement platforms: Facebook and our website. One of the advantages of using a social network like Facebook is that you already have a built-in network of people to connect with. Each person who views, with the ability to “share” the live program, multiplies the reach and widens our network quickly. It’s a new kind of digital evangelism.

So why do we do all this? Why are there cameras at Pioneer? Why do we live stream? Why does a team of almost 50 young adults (and some young adults in their “prime”) come week after week, for almost 5 hours, to volunteer their time? It’s because they have found community, and are building community together. It means something to them, and I find it a privilege to be on this team, as it also means something to me.



As we continue to experiment with our online presence and expand our reach through television ministry, we invite your prayers for those seeking community and a continued connection to the Pioneer family. When you're under the weather, traveling, or shut in, log onto our Facebook page (search "Pioneer Memorial Church") or our website (www.pmchurch.org), and join the conversation. Perhaps you'd even like to be one of our moderators. You can also e-mail livestream@pmchurch.org to learn how you can help become a social media ambassador. May you be encouraged to find ways in your daily life to

build community as we do the same here at Pioneer with the shared goal to spread the love Christ calls us to share. ■

Richard Parke is the director of Media Ministries here at PMC.

SUPPORT THIS MINISTRY

Please indicate
"Television Ministry"
on your tithe envelope.

WE WORSHIP

CONNECT • GROW • SERVE • GO

Opening Voluntary

Come, Thou Fount of Every Blessing • Gilbert Martin

Introit

Rank on Rank the Host of Heaven • Kenneth Logan

Call to Worship

Rodlie Ortiz

The God who made the world and everything in it gives life and breath to all.

See what love the Father has for us that we should be called the children of God.

This is his promise: if we believe in the name of his Son, Jesus Christ, we shall have life and experience it abundantly.

Come, then, let us worship Him.

Doxology

Praise God, From Whom All Blessings Flow • 2

Invocation

Sabine Vatel

Hymn of Praise

Come, Thou Fount of Every Blessing • 334

Congregational Prayer

Rodlie Ortiz

We Would See Jesus • st. 1 of 494

Worship in Music

Great Is Thy Faithfulness • William Runyan

Tithes & Offerings

PMC Operating Expense

Praise God, From Whom All Blessings Flow • attr. Henry Purcell

Children's Story

Scripture

1 John 3:1-10 NIV • Denis & Angelika Kaiser

See what great love the Father has lavished on us, that we should be called children of God! And that is what we are! The reason the world does not know us is that it did not know him.

Dear friends, now we are children of God, and what we will be has not yet been made known. But we know that when Christ appears, we shall be like him, for we shall see him as he is.

All who have this hope in him purify themselves, just as he is pure.

(continued on next page)

This is how we know who the children of God are and who the children of the devil are: Anyone who does not do what is right is not God's child, nor is anyone who does not love their brother and sister.

Hymn of Preparation

Showers of Blessing • st. 1 & 3 of 195

Sermon

"Significance" • Sabine Vatel

Hymn of Commitment

Lord, I Want to Be a Christian • st. 1-2, 4 of 319

Benediction

Closing Voluntary

Blessed Are You Who Live in Faith Unswerving
Johannes Brahms

PRESIDING PASTOR: Rodlie Ortiz; ORGANIST: Kenneth Logan
WORSHIP IN MUSIC: PMC Sanctuary Choir; Jeannie Pedersen-Smith, director

MUSIC ALIVE

VISIONS OF BLESSING

A wash in visions of blessing, two hymn verses say it well: "Come, Thou Fount of ev'ry blessing" and "Praise God, from Whom all blessings flow." The latter is, of course, the opening poetic line commonly sung as the Doxology, hymn no. 695. Its stately melody, OLD HUNDREDTH, was among the most-published melodies in early-American sacred tunebooks. The text

of the "Come, Thou Fount" (hymn 334) goes back more than 250 years, before the American Revolutionary War. Author Robert Robinson was English. His years from about age 14 to age 20 witnessed significant shifts, first in a "careless" life, then in a life with an awakened conscience at 17, then some three years later in the experience of being "really converted," as one commentary has it. ■

WE STUDY

CONNECT • GROW • SERVE • GO

Song Service	Christina Carroll
Welcome	Sinegugu Katenga
Prayer	Sam Clough
Scripture	Jonathan Logan
Special Feature	"Pathfinder Bible Experience" • Rebekah Amaya
Offertory	
Bible Study	"Grieving and Resisting the Spirit" • Classes
Theme Song	<i>Make Me a Blessing</i>

Make me a blessing; make me a blessing.
Out of my life may Jesus shine.
Make me a blessing; O Savior, I pray.
Make me a blessing; to someone today.

"Make Me a Blessing," Ira Bishop Wilson
©1924, Renewed 1952 Word Music, LLC; Used by Permission. CCLI License #392652

Benediction	Christina Carroll
--------------------	-------------------

ORGANIST: Kenneth Logan
OFFERTORY: Joshua Goines, piano

WE WORSHIP 2

CONNECT • GROW • SERVE • GO

As We Begin

Come, Thou Fount of Every Blessing • Gilbert Martin
Rank on Rank the Host of Heaven • Kenneth Logan

Praise

Bless His Holy Name • *Behold What Manner Of Love*
You Are My King (Amazing Love) • *I Love You Lord*

Prayer

Rodlie Ortiz

Tithes & Offerings

Praise God, From Whom All Blessings Flow • attr. Henry Purcell

Children's Story

Bible Reading

1 John 3:1-10 NIV

Worship in Music

Great Is Thy Faithfulness • William Runyan

Sermon

"Significance" • Sabine Vatel

Connect Card

Lord, I Want to Be a Christian • st. 1-2, 4 of 319

Benediction

God Be With You Till We Meet Again • Ralph Vaughan Williams

As We Depart

Blessed Are You Who Live in Faith Unswerving • Johannes Brahms

WORSHIP COORDINATOR: José Bourget; ORGAN: Kenneth Logan

ACOUSTIC GUITAR: Michael Gibson

VOCALS: Molitoni Hola, Precious Mauia, Raymond Sasa, Taualoa Sasa,

Justin Tonga, Pamela Tonga, Malauli Ualita

WORSHIP IN MUSIC: PMC Sanctuary Choir; Jeannie Pedersen-Smith, director

SUBMIT announcements by emailing bulletin@pmchurch.org or by going to www.pmchurch.org/announcements/submit. Requests must be received **Monday by 5:00 PM** for consideration.

NEXT WEEK'S OFFERING
Michigan Advance Partners

SUNSET TODAY • 7:53
SUNSET NEXT FRIDAY • 8:01

PIONEER PULPIT

| 03 • 25 |

JOSÉ BOURGET

"Us: How the Gospel Reframes 'the Other'"
Communion

| 04 • 01 |

DWIGHT K. NELSON

"Gone Fishin'" –1

FINANCIAL FEATURE

PMC OPERATING BUDGET

We are all blessed by a church that cares for its members and the community at large. You can be a part of the "team" of caring individuals through your prayers, donations of your time and talents, and your systematic giving to Line 2, PMC's operating expense. This gift makes it possible for our church to be that caring church by providing the resources (staff, potluck/funeral dinners, outreach evangelism, GROW Groups, etc.) needed to meet the needs of this congregation and community. Thank you for your help today!

Family Vespers

TODAY • 7:30 PM

YOUTH CHAPEL

Come and receive a blessing as we praise God at the close of this Sabbath.

Adult Sabbath School Quarterly from Your Sabbath School Teacher or Leader

The Sabbath School Council's goal is that every Pioneer member who wishes to have a Sabbath School Quarterly can receive one and to practice better stewardship. Teachers or group representatives are asked to pick up quarterlies on behalf of their Sabbath on-duty leaders or Sabbath School group on March 18 and 24 from the Welcome Center. Please note that Adult Sabbath School materials are also available for free online via: <http://ssnet.org/study-guides/>. If you are a leader or representative and have not yet put in your request please write to Janna Quetz janna.quetz@pmchurch.org.

Pathfinder Union Level Bible Experience

TODAY • 3:00 PM

PMC SANCTUARY

Come and support our PMC Evergreen Pathfinders! This year they have been studying Ephesians, Philippians, Colossians, as well as 1 & 2 Timothy.

Scrapbooking Together

TOMORROW • 11:00 AM TO 6:00 PM
PMC COMMONS

Bring your paper craft supplies (scrapbook, card making, etc.) and a favorite snack and enjoy time working on your projects. We will provide the chocolate and prizes. If you have questions, email sherrie.davis@lakeunion.org.

BCYF Health Tent Steering Committee

MARCH 20 • 7:00 PM
VILLAGE SDA CHURCH

All health ministry leaders and other interested persons are invited to attend the first meeting of the Steering Committee for the Health Tent at the Berrien County Youth Fair. Let's brainstorm about how to best use this wonderful evangelism opportunity. Contact Kathy Koudele if you have any questions (koudelej@andrews.edu or 269.313.8774).

Eating You Alive Documentary

MARCH 29 • 6:00 TO 9:00 PM
BULLER HALL (NEWBOLD AUD.)

This feature-length documentary (including refreshments & health expert Q & A) reveals the truth behind why Americans are so sick and what we can do about it. The film looks at who's responsible for feeding us the wrong information and how we can use whole-food, plant-based nutrition to take control of our health—one bite at a time. Featuring leading physicians, researchers, nutritionists, and other health experts from across the U.S. For more information or to RSVP visit www.andrews.edu/wellness/healthandwellnessfest/. If you have questions please call 269.471.3320.

House of Prayer—2 Sessions

WEDNESDAYS • 7:00 AM/7:00 PM

Join us morning (Youth Chapel) or evening (Sanctuary) for group praying—bring your Bible, bring a friend.

Master Guide Skills Development

MARCH 31

PMC JUNIOR 1 SABBATH SCHOOL

7:00 PM – Creativity & Resource Dev.

8:15 PM – Creative Worship

APRIL 1

PMC JUNIOR 1 SABBATH SCHOOL

3:00 PM – Evangelism

4:15 PM – Lead a Child to Christ

5:30 PM – Spiritual Gifts

PMC Youth Missions Team

The PMC Youth Mission team of 11 students led by Glenn Russell is in Lebanon. Donations should be marked *PMC Youth Missions Lebanon*. Your prayers and support are appreciated as the team serves the campuses and refugees there.

We Mourn

Today we mourn with Dan Burtnett on the death of his mother, Clara Belle Carson Burtnett, who died on March 7. A funeral will be on Sunday, March 19, at 2 PM, at the Collegedale SDA Church. With the Burtnett family we look forward to the resurrection morning. "Even so, come Lord Jesus."

Get Our E-Letter!

Receive PMC's e-Letter, Pioneer Mid-week, for weekly updates about church life, events, and more! Subscribe today at www.pmchurch.org/newsletter.

Ellen G. White Issues Symposium

APRIL 3 • 9:00 AM TO 5:00 PM
SEMINARY CHAPEL

Join us for this annual event sponsored by the Center for Adventist Research, the Ellen G. White Estate Branch Office, and the Seminary's Department of Church History. This symposium will break new ground in understanding Ellen White and issues with current importance relating to her life, ministry and prophetic gift. Admission is free. Speakers include Richard Davidson, Jiri Moskala, Merlin Burt, Denis Kaiser, and Iriann Marie Hausted. There will be an opportunity to submit questions relating to Ellen White and current issues which will be debated at the afternoon panel discussion.

Empowered To Connect

APRIL 7-8

This two-day conference is designed to help adoptive/foster parents, ministry leaders, and professionals better understand how to connect with "children from hard places" in order to help them heal and become all that God desires for them to be. Presented locally by God's Hands 4 Kids, Berrien County DHHS, and Post Adoption Resource Center. Volunteers and food donations are still needed. For more info and to contact us go to www.GH4K.org.

Hinsdale Men's Chorus

APRIL 8 • 4:30 PM
ALL NATIONS SDA CHURCH
(4259 EAST SNOW RD.)

The Hinsdale Men's Chorus (as sometimes heard on LifeTalk Radio in Berrien Springs) will be presenting an afternoon vespers service.

International Food Fair

APRIL 9 • 12:00 TO 7:00 PM
JOHNSON GYM

This year's annual International Food Fair will represent over 80 countries and nearly two dozen ethnic clubs. Come and participate in this opportunity to showcase the cultural diversity at AU and experience food and culture from around the world.

Music & Worship Conference

APRIL 20-22

This conference provides biblical training opportunities for church musicians, pastors, worship leaders, and anyone involved in worship ministry. Our theme is "We Are One: Cultivating Diverse Community through Christian Worship." In a world where division is increasingly evident, worshipping together as a diverse community offers us the opportunity to celebrate and practice our unity in Christ. To register and for more info visit www.cye.org/mwc.

2017 Intensive Workshop in Natural Remedies and Hydrotherapy

AUGUST 6-11

SDA THEOLOGICAL SEMINARY

Lecturers from Uchee Pines, Andrews University, and Weimar will teach the skillful use of natural remedies, water, nutrition, charcoal and massage. To register visit www.andrews.edu/go/nrhw, email janinec@andrews.edu, or call 269.471.3541. Preregistration is encouraged as enrollment is limited.

More Announcements

For more PMC and community announcements, please visit our website at www.pmchurch.org/announcements.

| PASTORS | | STAFF |

Chaplain / Pioneer

José Bourget • 471.6254
bourget@pmchurch.org

Admin. Assistant

Lailane Legoh • 471.3543
legoh@pmchurch.org

Discipleship / GROW Groups

Sabine Vatel • 471.6153
vatel@pmchurch.org

Admin. Assistant

Claudia Sowler • 471.3134
claudia.sowler@pmchurch.org

Harbor of Hope

Taurus Montgomery • 269.923.9274
montgomery@pmchurch.org

Admin. Assistant / Facilities / Clerk

Janna Quetz • 471.3133
janna.quez@pmchurch.org

Lead Chaplain

June Price • 471.6282
juneprice@andrews.edu

Assistant Media Director

Jonathan LaPointe • 471.3678
lapointe@pmchurch.org

Lead Pastor

Dwight K. Nelson • 471.3134
nelson@pmchurch.org

Assistant Treasurer

JoAnn Siagian • 471.7656
siagian@pmchurch.org

Pastoral Care

Don Dronen • 471.3133
dronen@pmchurch.org

Bible Work Coordinator

Tabitha Umali • 471.3550
tabitha.umali@pmchurch.org

Stewardship

Sharon Terrell • 471.6151
terrell@pmchurch.org

Graphic Designer

Rachelle Offenback • 471.3647
bulletin@pmchurch.org

This Generation Evangelism

Rodlie Ortiz • 471.6154
ortiz@pmchurch.org

Maintenance

Larry White • 471.3649
white@pmchurch.org

Youth Ministries

Ben Martin • 471.6176
ben.martin@pmchurch.org

Media Ministries

Richard Parke • 471.3246
richard.parke@pmchurch.org

Music

Kenneth Logan • 471.3231
logan@pmchurch.org

TRANSFORMING
THIS **GENERATION**



CONNECT·GROW·SERVE·GO