

PIONEER

CONNECT

FEBRUARY 27, 2016



*Charmed
into Righteousness*

THE MOST
LOVING GOD

PIONEER ONE • PAGE 8 | PIONEER TWO • PAGE 11

33 weeks until *Hope Trending*




WELCOME

to Pioneers

Welcome to Worship at Pioneer Memorial Church, an International House of Prayer for All People. Located on the campus of Andrews University, some of those in our pews include faculty and students from more than 90 countries. However, that is not all that makes PMC an international church. Technology allows us to share our worship experience with many around the world as a means of following the Gospel Commission to "Go Ye Into All the World" (Mark 16:15).

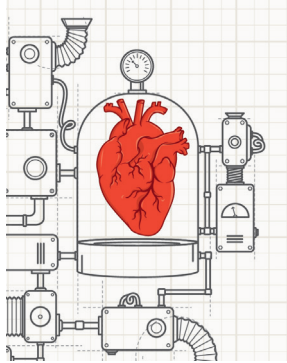
Today, you will be some of the first to hear about a *new way* of sharing God's love to this generation. As you listen to preliminary plans for this unique approach to global evangelism, you, members and guests, are encouraged to consider how you will partner in sharing God's love to all the world.

–Sharon Terrell

 PIONEER MEMORIAL CHURCH 8655 UNIVERSITY BOULEVARD, BERRIEN SPRINGS, MI 49103		
OFFICE HOURS Monday – Thursday (8 to 5) • Friday (8 to 12)		PHONE – 269.471.3133 FAX – 269.471.6152
LIVE STREAMING www.newperceptions.tv Sabbath 11:45 AM	ONLINE www.pmchurch.org www.newperceptions.tv	RADIO WAUS – 90.7 FM Sabbath 11:30 AM
 DIGITAL BULLETIN Scan this code to get your digital copy of this week's bulletin.		 FIND A SABBATH SCHOOL

FIND IT HERE

CONNECT • GROW • SERVE • GO



4

**THE FOURTH
WATCH BLOG**

While the Door is
Still Open

6

PIONEER LIFE
Guard Your Heart

8

PIONEER ONE
9:00 AM Worship

10

SABBATH SCHOOL
The Great Controversy
and the Early Church

11

PIONEER TWO
11:45 AM Worship

12

ANNOUNCEMENTS

14

2016 BUDGET

15

CONTACTS

WHILE THE DOOR IS STILL OPEN

BY DWIGHT K. NELSON

When the news first broke, my reaction was a they'll-never-get-Apple-to-buckle dismissal. True, the FBI possessed a cell phone belonging to one of the San Bernardino terrorist-killers. And yes, government law enforcement agencies have significant cause to seek information encrypted inside that Apple cell phone. But isn't this a matter of free speech, civil liberty, and customer privacy? Tech giants Google/Alphabet, Facebook, Microsoft, Yahoo, Twitter all agree with Apple's refusal to comply with either the FBI or the court order to unlock potential incriminating evidence inside the phone. Chalk up another win for privacy.

But that was yesterday—this is today. Turns out the FBI and the federal courts have painful tools they can wield to force Apple and its CEO Tim Cook into compliance. According to a piece at [FastCompany.com](http://www.fastcompany.com/3057045/how-apple-could-be-punished-for-defying-fbi-encryption-order), the potential penalties are no laughing matter (see <http://www.fastcompany.com/3057045/how-apple-could-be-punished-for-defying-fbi-encryption-order>). First, the court can levy financial penalties—from \$10,000 per day according to a 1992 communications law up to \$250,000 a week (based on a case against Yahoo, where “the daily fine was set to double every week that Yahoo refused to comply”—\$250,000 this week, a half million dollars next week,

a million dollars the next, etc). But still what are these millions in comparison to the billions of dollars Apple is worth?

But there's more: “Apple could be held in criminal contempt of court for defying the order signed by Judge Pym. This legal mechanism is often used when no amount of civil coercion (like monetary fines) can make the party in question comply with the court's demands,’ [attorney] Fu explains. Courts can use this non-monetary punishment on journalists who refuse to divulge their sources, for example. The goal isn't to compensate an injured party, but rather to ‘punish the target party and to vindicate the authority of the court,’ Fu says. If the case goes all the way to the Supreme Court, and Apple refuses to comply with a demand to adhere to the [Judge] Pym order, then things get a little crazy. ‘Under these circumstances, there is a universe of possibilities where Tim Cook could actually go to jail for refusing to comply with a lawful order of the court,’ Fu says” (ibid).

Who cares? We all should. Global terrorism (from Paris to San Bernardino) has rewritten the playbook for human freedom. It isn't incongruous to surmise that even free access to the Internet enjoyed by most of the world could eventually be reduced or even removed, given the heated, escalating debate over personal freedom vs national security. Moreover the Apocalypse predicts an



eventual radical slashing of personal freedom in society (whether economic, social, or religious—see Revelation 13).

But the door to the world is still open. Which is why today we begin a countdown to “HOPE TRENDING: A Crash Course on How to Live without Fear”—a first of its kind cyberspace experience to communicate the “everlasting Good News” to this 3rd millennial generation. Beginning October 14 in the Howard Performing Arts Center, HOPE TRENDING will be a fast-paced, nine-evening, 60-minute live program to all twenty-four time zones on earth. Anyone anywhere with a cell phone, a tablet or a laptop within reach of WIFI will be able to connect. Combining a TED-talk length presentation each evening with a high-octane panel discussion fielding questions globally through social media—HOPE TRENDING will harness the

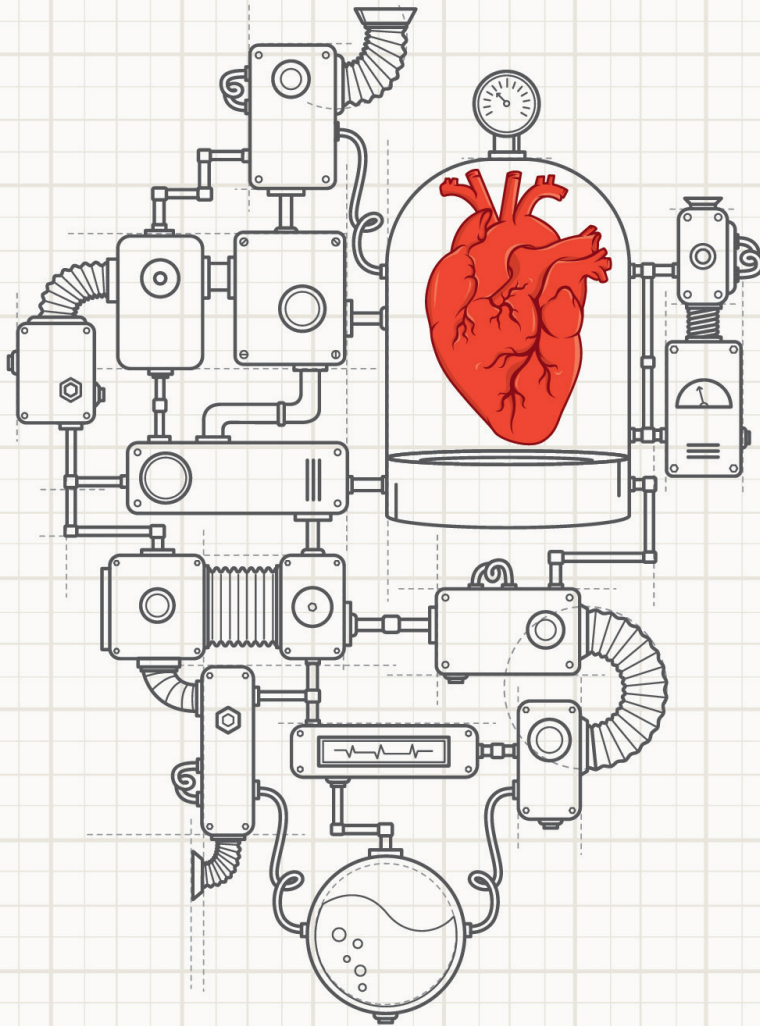
Internet to communicate the most compelling news this civilization must hear.

There are three ways I hope you’ll respond: (1) pray daily for the success of this new mission; (2) begin a prayer list of individuals to invite to this unique experience; and (3) join the large volunteer team essential for the success of this Kingdom venture. Jesus couldn’t be clearer: **“As the Father has sent Me, I am sending you—so go into all the world and share the Good News—for I am with you always, even to the end of the age” (John 20:21; Mark 16:15; Matt 28:20).**

While the door is still open, we must go. ■

You can follow Pastor Dwight’s blog at www.pmchurch.org/blog.

GUARD *your* HEART



"Above all else, guard your heart, for everything you do flows from it." (Proverbs 4:23)

BY MAYELIN LORA-WILLIAMS

Your heart is an extraordinary part of your body. It beats 100,000 times a day, and pumps about 2,000 gallons of blood a day, carrying vital materials that help your body to function and removing waste products from your body. Heart disease is the leading cause of death in the United States, but that doesn't mean you have to accept it as your fate. Here are some key steps that you can take to guard your heart.

LET'S GO WITH PLANTS

Include more vegetables, fruits, beans, whole grains, and nuts. Following a vegetarian diet results in the consumption of less saturated fat, and more fiber and phytochemicals.

INCREASE YOUR FIBER

Eating the right amount of fiber will protect your heart by lowering the bad cholesterol. Fiber also plays an important role to keep you full for a longer period of time.

THE TYPE OF FAT COUNTS

Instead of eating fats found in red meat, deep-fried fast food, bakery products, and packaged foods, include healthy fats found in avocados, olive oil, canola oil, legumes, whole grains, and seeds.

MAINTAIN A HEALTHY WEIGHT

Excess body weight will lead to conditions that will increase your chances of heart disease. Decreasing your body weight by

just 5% to 10% can help you to decrease your blood pressure, cholesterol levels and the risk of diabetes.

INCREASE PHYSICAL ACTIVITY

Physical activity will help you control your weight and reduce the risk of developing conditions that will increase the risk of heart disease. Maintain a balance between your caloric intake and your physical activity.

Since the beginning, the first prescription for a healthy heart diet was given by our Creator—plants, seeds, and fruits. His intention was to protect our physical and spiritual heart. In the same way we protect our physical heart, we should protect our spiritual heart from the ailments that inhibit our spiritual growth and development. ■

Mayelin Lora-Williams is a Nutrition and Wellness student.

SUPPORT HEALTH MINISTRIES

Please indicate
"Master Plan - Evangelism"
on your tithe envelope.

WE WORSHIP

CONNECT • GROW • SERVE • GO

Opening Voluntary

Poem of Divine Love • Kenneth Logan

Introit

Come Into His Presence

Call to Worship

Sharon Terrell

Whoever would be great among you must be your servant;

**Even as the Son of God came not to be served but to serve,
to give his life as a ransom for many.**

In this is love, not that we loved God, but he loved us, and sent his Son to be the sacrifice for our sins.

**The Lord has remembered us with his faithful love and we
shall praise his name forever!**

Doxology

Praise God, From Whom All Blessings Flow • 2

Invocation

Dwight K. Nelson

Hymn of Praise

Love Divine, All Loves Excelling • st. 1, 3 & 4 of 191

Congregational Prayer

Christina Goosey
Jesus, the Very Thought of Thee • st. 1 of 241

Worship in Music

I'm Goin' to Sing • Spiritual / Alice Parker & Robert Shaw

Children's Story

The King of Love My Shepherd Is • Sharon Rogers

Scripture

1 John 4:8-10, 16 NIV • Carlos & Jenny Newmann

Whoever does not love does not know God, because God is love.

**This is how God showed his love among us: He sent his one
and only Son into the world that we might live through him.**

This is love: not that we loved God, but that he loved us and sent his Son as an atoning sacrifice for our sins.

**And so we know and rely on the love God has for us. God is love.
Whoever lives in love lives in God, and God in them.**

Hymn of Preparation

The Wonder of It All • 75

Sermon	"Charmed into Righteousness: The Most Loving God" Dwight K. Nelson
Hope Trending	An Introduction
Connect Cards, Tithes & Offerings	PMC Operating Expense
Hymn of Commitment	<i>The Love of God</i>
Benediction	
Closing Voluntary	<i>O Love, How Deep, How Broad, How High</i> • David Johnson

PRESIDING PASTOR: Sharon Terrell; ORGANIST: Kenneth Logan
 WORSHIP IN MUSIC: PMC Sanctuary Choir; Jeannie Pedersen-Smith, director

MUSIC ALIVE

LOVE DEEP, BROAD, AND HIGH

Words and music fall short of expressing the immense concept of divine love. Today's Closing Voluntary's title suggests that this love is deep, broad, and high (see the words of hymn 148). Elsewhere, "Poem of Divine Love" centers on a particular aspect of God's Love: yearning love. The lone-flute introduction suggests purity. The main melody, entering in tenor range after this introduction, starts rather tightly

"wound" around a single note, but then expands higher and lower, as if reaching in yearning. An intense middle section leads to an expansive climax with not only extremely high and low pitches, but also with great power. A reflective close brings the piece back to the beginning's spirit, perhaps reflecting the place where much of this piece was drafted: an alpaca ranch in British Columbia. ■

WE STUDY

CONNECT • GROW • SERVE • GO

Song Service

Rachel Sauer

Welcome

Makenzy Jean

Prayer

Sharon Quartey

Scripture

Gabi Francisco

Special Feature

Makenzy Jean

Offering

Bible Study

“The Great Controversy and the Early Church” • Classes

Theme Song

Make Me a Blessing

Make me a blessing; make me a blessing.
Out of my life may Jesus shine.
Make me a blessing; O Savior, I pray.
Make me a blessing; to someone today.

“Make Me a Blessing,” Ira Bishop Wilson
©1924, Renewed 1952 Word Music, LLC; Used by Permission. CCLI License #392652

Benediction

Rachel Sauer

ORGANIST: Kenneth Logan

WE PRAISE

CONNECT • GROW • SERVE • GO

As We Begin

The King of Love My Shepherd Is • Sharon Rogers
Come Into His Presence

Praise

Love Divine, All Loves Excelling • *Under The Blood
Better Is One Day* • *I Could Sing Of Your Love Forever*
(Baptism) Erin Nicole Cross with Rodlie Ortiz

Prayer

Michael Wahlen

Children's Story

Poem of Divine Love • Kenneth Logan

Worship in Music

I'm Goin' to Sing • *Spiritual / Alice Parker & Robert Shaw*

Sermon

"Charmed into Righteousness: The Most Loving God" • Dwight K. Nelson

Hope Trending

An Introduction

Connect Card, Tithes & Offerings

Hymn

The Love of God

Benediction

God Be With You Till We Meet Again • Ralph Vaughan Williams

As We Depart

O Love, How Deep, How Broad, How High • David Johnson

WORSHIP COORDINATOR: José Bourget; ORGANIST: Kenneth Logan; GUITAR: Luke Penrod
VOCALS: Leslie Diaz, Rebecca Finai, Jonathan Constantine; CAJON: Stacey DePluzer; CELLO: Joshua Knowlton
WORSHIP IN MUSIC: PMC Sanctuary Choir; Jeannie Pedersen-Smith, director

SUBMIT announcements by emailing bulletin@pmchurch.org or by going to www.pmchurch.org/announcements/submit. Requests must be received **Monday by 5:00 PM** for consideration.

NEXT WEEK'S OFFERING
PMC Operating Expense

SUNSET TODAY • 6:30
SUNSET NEXT FRIDAY • 6:39

PIONEER PULPIT

| 03 • 05 |

DWIGHT K. NELSON

"Charmed into Righteousness:
The Most Righteous Lord"

| 03 • 12 |

RODLIE ORTIZ

"How to Live a Victorious Christian Life"

FINANCIAL FEATURE

PMC OPERATING BUDGET

Today's offering is for the Pioneer Memorial Budget. How wonderful it is to worship together as the Pioneer Memorial Church family! How blessed we are to hear the Word of God preached each Sabbath by committed servants of God, to listen to and sing beautiful, uplifting music, and to have the opportunity to be a blessing to each other with our encouraging words. This church is unique with its wonderful mixture of ages, colors and talent. Let's show our gratitude to God for this community of worship by supporting our church budget today!

Family Vespers

TODAY • 6:00 PM
YOUTH CHAPEL

Today we will complete studying the book of Ruth "From Moab to Bethlehem" with Jennifer Dailey. Everyone is welcome.

Scrapbooking Together

TOMORROW • 11:00 AM TO 5:00 PM
PMC COMMONS

Bring your projects and your favorite snack and get creative. We have prizes and chocolate.

Academy Day

MARCH 8 • 8:00 AM TO 3:15 PM
ANDREWS ACADEMY

Eighth-graders are invited to come see the exciting programs Andrews Academy offers. Experience a day filled with a number of classes, worship, games, and activities. Lunch will be served, t-shirts and prizes will be given. Registration begins at 7:30 AM. If you have questions call 269.471.3138.

Adventist Retirees

MARCH 13 • 1:00 PM
VILLAGE CHURCH FAMILY CENTER

Don't miss out on the incredible presentation of "Pigeon Man," at the monthly ARM potluck. All members are welcome. Come and enjoy!

Passion Play Hospitality Tent

MARCH 26

PMC is sponsoring the Hospitality Tent for this year's Easter Passion Play. We need over 300 people who will help us before, during, and after the event. We need your hands, feet, smiles, and your sweet words. To register please visit pmchurch.org/passionplay and find a time slot you would like to lead with your team.

Thank You

Thank you for the many prayers, flowers and other expressions of caring during the time since our father/grandfather's stroke in 2000 and subsequent passing's stroke on January 31, 2016. It meant a lot to him and to us.

-The family of Paul Cress

Care for Cuba

Care for Cuba is an initiative of the SDA Theological Seminary with the purpose of bringing crucial resources to pastors in Cuba. There are 11.2 million people living in Cuba, and out of 400 pastors and Bible workers, few have the needed technology, transportation, and ministry resources to reach these people and finish the gospel work. Help by giving to the projects listed on our website. Your donation is 100% tax deductible! Mark your tithe envelope as "Cuba" (checks payable to PMC) or visit www.CareforCuba.org to donate online.

More Announcements

For more PMC and community announcements, visit our website at www.pmchurch.org/announcements.

Nominating Committee—2nd Reading

On Wednesday, February 3, the following individuals were selected to serve on the Nominating Committee. Some of these individuals may have said no.

Lydia Balorda

Andrew Burrill

Russell Burrill

Bill Chobotar

Carmen Collins

Claudia Davisson-Chr.

Kathleen Demsky

Emory Dent

Shelly Erhard

Jeremiah Faehner

Philip Giddings III

Vanna Giddings

Vida Giddings

Dennis Hollingsead-Sec.

Oleg Kostyuk

Averil Kurtz

Jonathan Logan

Ben Maguad

Debbie Michel

Debra Montcalm

Caprice Mottley

Joy Ngugi

David Nowack

Mordekai Ongo

Beverly Peck

Jean Pedersen-Smith

Norman Pottle

Lucy Randall

Julie Reid

Suzanne Renton

Brittany Ronto

Ivette Ruban

Gillian Sanner

Jane Thayer

Tabitha Umali

Lily Vajdic

Milan Vajdic

Peter van Bemmelen

Rebecca von Dorpowski

Bryan von Dorpowski

Robert Wilkins

Xiaoming Xu

Jessica Yoong

Dillon Zimmerman

PMC 2016 OPERATING BUDGET

The 2016 PMC Operating Budget will be presented for approval during a business meeting on March 7 at 7:00 PM. Detailed budget information is available at each welcome center and at the church office.

2016 Budget Summary

	Budget 2016	Budget 2015	Actual 2015
NET ASSET BEGINNING BALANCE	\$865,865	\$711,289	\$711,327
INCOME			
<i>Church Family Finance Goals:</i>			
Church Operating	\$667,000	\$610,000	\$627,237
Kingdom Growth	0	100,000	29,894
Christian Education	223,787	211,695	223,786
Master Plan for Evangelism	125,000	139,800	106,673
Building Fund	46,000	45,000	45,590
Student Aid	57,000	55,000	58,646
Total Family Finance Goals	\$1,118,787	\$1,161,495	\$1,091,826
Other Evangelism	219,893	182,122	634,498
Sabbath School	39,385	44,180	37,000
Youth/Outreach Ministries	157,570	133,500	156,426
Television/Media Ministry	274,500	317,000	268,433
Other Income	153,646	153,601	230,945
TOTAL INCOME	\$1,963,781	\$1,991,898	\$2,419,128
EXPENSES			
Evangelism Programs	\$405,035	\$350,908	\$588,002
Sabbath School	60,575	71,450	76,206
Youth/Outreach Min/GROW	233,370	176,915	213,473
Christian Educ./Student Aid	347,907	301,645	333,265
Church Operations	455,651	487,722	435,320
Building/Maintenance	169,927	183,544	151,789
Television/Media Ministry	353,054	376,870	339,112
Other	78,700	97,010	127,381
TOTAL EXPENSES	\$2,104,219	\$2,046,064	\$2,264,548
Net Increase (Decrease)	(140,438)	(54,166)	154,580
NET ASSET ENDING BALANCE	\$725,427	\$657,123	\$865,907

| PASTORS |

Chaplain / Pioneer

José Bourget • 471.6254
bourget@pmchurch.org

Discipleship / GROW Groups

Sabine Vatel • 471.6153
vatel@pmchurch.org

Harbor of Hope

Taurus Montgomery • 269.923.9274
montgomery@pmchurch.org

Lead Chaplain

June Price • 471.6282
madrigal@andrews.edu

Lead Pastor

Dwight K. Nelson • 471.3134
nelson@pmchurch.org

Pastoral Care

Don Dronen • 471.3133
dronen@pmchurch.org

Stewardship

Sharon Terrell • 471.6151
terrell@pmchurch.org

This Generation Evangelism

Rodlie Ortiz • 471.6154
ortiz@pmchurch.org

Youth Ministries

Ben Martin • 471.6176
ben.martin@pmchurch.org

Media Ministries

Richard Parke • 471.3246
richard.parke@pmchurch.org

Music

Kenneth Logan • 471.3231
logan@pmchurch.org

| STAFF |

Admin. Assistant

Autumn Mincinoiu • 471.3553
autumn.m@pmchurch.org

Admin. Assistant

Lailane Legoh • 471.3543
legoh@pmchurch.org

Admin. Assistant / Facilities

Janna Quetz • 471.3133
janna.quez@pmchurch.org

Assistant Media Director

Jonathan LaPointe • 471.3678
lapointe@pmchurch.org

Assistant Treasurer

JoAnn Siagian • 471.7656
siagian@pmchurch.org

Bible Work Coordinator

Tabitha Umali • 471.3550
tabitha.umali@pmchurch.org

Clerk

Jackie Bikichky • 471.3972
bikichky@pmchurch.org

Communications

Rebecca Coleman
rebecca.coleman@pmchurch.org

Executive Assistant

Sherrie Davis • 471.3134
davis@pmchurch.org

Graphic Designer

Rachelle Offenback • 471.3647
bulletin@pmchurch.org

Maintenance

Larry White • 471.3649
white@pmchurch.org

GENESIS

UNBIASED.
OPEN-MINDED.
INTERACTIVE.

young adult sabbath school

EVERY SABBATH
10:00 AM ★ PMC BOARD ROOM