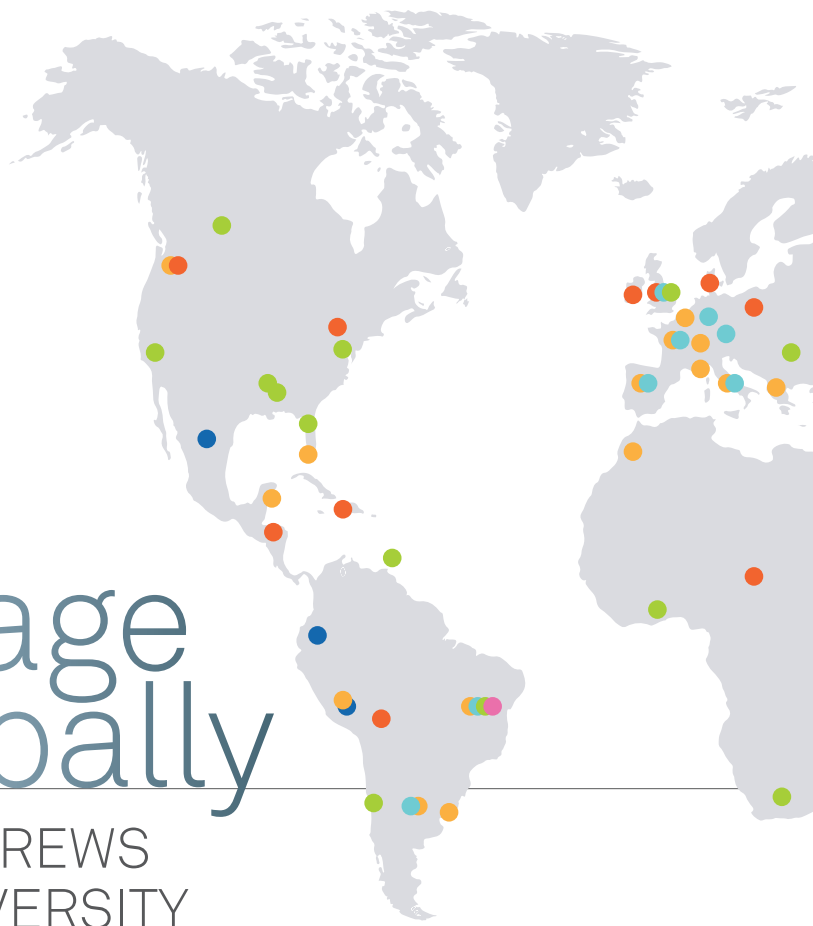


PIONEER

CONNECT

AUGUST 15, 2015



Engage
Globally

ANDREWS
UNIVERSITY
Fall Fellowship

WELCOME, BLESSED SABBATH DAY!

Good morning and welcome to Pioneer Memorial Church—the House of Prayer for All People.

Today is a special day of recognition and dedication for our returning faculty and staff. For each committed individual who serves, whether at Andrews University, Andrews Academy or Ruth Murdoch Elementary, we are so very thankful!

The Pioneer Memorial Church members and friends join today in praying for

those who have the extraordinary opportunity to make a difference in the lives of so many young people. And we also pledge our support in whatever way God directs to be the "hands" for needs that are brought to our attention.

May this Sabbath be for all of us our most important appointment of all the week—our special appointment with God! *Welcome, Welcome, Ever Welcome, Blessed Sabbath Day!* -Sharon Terrell

RMES CLEANING-BEE

Eboni Regis helps clean a Ruth Murdoch Elementary School hallway during the recent cleaning-bee.
(Photo credit: Brianna Martin)



FIND IT HERE

CONNECT • GROW • SERVE • GO



4

**THE FOURTH
WATCH BLOG**

What a Summer:
"Engage Globally"

6

FEATURE ARTICLE

The Perfect Time

8

PIONEER ONE

9:00 AM Worship

10

**HYMN OF
PREPARATION**

11

LITANY ONE

12

LITANY TWO

13

PIONEER TWO

11:45 AM Worship

14

SABBATH SCHOOL

Jesus: The Master
of Missions

15

MPE ARTICLE

BCYF Health Tent

16

ANNOUNCEMENTS

20

CONTACTS

22

**SABBATH SCHOOL
DIRECTORY**

WHAT A SUMMER: “ENGAGE GLOBALLY”

BY DWIGHT K. NELSON

Sunday morning while still lying in bed, I decided to do the arithmetic. Perhaps it was the simple pleasure of sleeping in our own bed that triggered the notion. And so I counted the number of summer nights we slept in a bed not our own. I was surprised and so recalculated the number. It's true. The total nights away from our favorite bed (from the last week of May to the last week of July) added up to forty. Brazil, Collegedale, West Virginia, Austin, San Antonio, Pugwash Nova Scotia, Vermont. (That three of those 40 nights were spent with our nearing-the-age-of-two-and-talking-up-a-storm granddaughter Ella certainly made the 40 more palatable!) And if you spent even more nights this summer on the road—and you have my condolences.

Speaking of San Antonio, the 60th Session of the General Conference, with its 2500 delegates and 50,000 attendees on the two Sabbaths, filled the Alamodome with a ten-day event unique in that city's history. And while a GC session is much more than doing the business of the global Seventh-day Adventist Church—who doesn't enjoy the family reunions and friendship renewals—it

was the daily business sessions that turned out to be highly instructive.

Perhaps the most commented on dramatic take-home-truth bears repeating. From the first vote of the business session, it was vividly clear that San Antonio would

**FROM THE FIRST
VOTE OF THE
BUSINESS SESSION,
IT WAS VIVIDLY
CLEAR THAT SAN
ANTONIO WOULD
REPRESENT A MAJOR
SEA CHANGE IN THE
LIFE OF OUR GLOBAL
FAITH COMMUNITY.**

represent a major sea change in the life of our global faith community. In my memory (and I've attended the quinquennial GC sessions since New Orleans in 1985), this was the most marked shift of the locus of church influence—from the long-held dominance of the North to the rapidly growing influence of the South. Clearly the church below the equator has by its sheer numbers of bur-

geoning membership achieved a global influence it has not had before.

Is that a demographic reality we should bemoan? Hardly. While it was disappointing for those of us who have long believed the Bible does not close the door to the ordination of women to the gospel ministry, but in fact opens that door through the expanding revelation of God's inclusive love eloquently championed by Scripture itself—nevertheless, decision-making in the healthiest families has always been a shared endeavor. The



North has enjoyed its day in the gospel sun. Now the flourishing millions of the South bask in that light. And truth be told, we the church are better for it.

Look at Andrews University. The demographic and geographic shifts of the world and the church are manifested in youthful energy right here on this campus. “Engage globally” is our theme for Fall Fellowship this weekend. How appropriate. Because if we refuse to engage globally, it is now more than clear—both the rest of the church and the world will move on. We must move with them.

No wonder the compelling prayer of Psalm 67 combines a heart cry for God’s blessing with a prayer for the world’s sal-

vation. Apparently in the mind and heart of God, the one is for the sake of the other. His manifold blessings upon His people are to propel them with His saving grace to the world. The one is for the sake of the other. Which surely means that to plead for the one without praying for the other simply misses His point. And our purpose.

“May God bless us still, so that all the ends of the earth will fear him” (Psalm 67:7). I.e., engage globally.

You can follow Pastor Dwight’s blog at www.pmchurch.tv/blog.



— THE —
Perfect Time

BY REBECCA SAULS

Solomon said, “I have observed something else under the sun. The fastest runner doesn’t always win the race, and the strongest warrior doesn’t always win the battle. The wise sometimes go hungry, and the skillful are not necessarily wealthy. And those who are educated don’t always lead successful lives. It is all decided by chance, by being in the right place at the right time” (Ecclesiastes 9:11 *NLT*). Looking at your life today you can see you are in the right place at the right time. You’ve made the necessary sacrifices and have done the work, despite all of the challenges. Life is a continuous journey, Solomon is correct; there is no way to know for sure what the future will hold. Nevertheless, I believe you can survive anything life

climb over every emotional challenge, **go around** every social issue, and **crawl under** every mental battle. For every physical weakness I dare you to **pick it up and throw it**. Finally, for every spiritual setback, in faith I say **walk through it**. Today, you have proven that you have what it takes to be victorious. There are more success stories in your future. Enjoy every moment!

“There is nothing better than to be happy and enjoy ourselves as long as we can. And people should eat, drink and enjoy the fruits of their labor, remembering they are gifts from God. No man can see the scope of God’s work from beginning to end. However, you can rest assured that God has made everything beautiful in its perfect timing.” (Ecclesiastes 3:11-13 *NLT*)
REJOICE! This time is yours! ■

NO MAN CAN SEE THE SCOPE OF GOD’S WORK FROM BEGINNING TO END. HOWEVER, YOU CAN REST ASSURED THAT GOD HAS MADE EVERYTHING BEAUTIFUL IN ITS PERFECT TIMING.

Rebecca Sauls is the AU GSA Executive Officer for the 2015/16 school year.

sends your way. As you continue to face what life throws your way, I urge you to press on towards the mark, keep your eye on the goals before you and don’t look back. Sure, there will be barriers along the way. Don’t be discouraged. Instead,

FAMILY WORSHIP

CONNECT • GROW • SERVE • GO

Opening Voluntary

Jesu, Jesu, Fill Us With Your Love
Ghanaian melody / Robert Powell

Introit

Teach Me, Father • Harold Miller

Doxology

Praise God, From Whom All Blessings Flow • 2

Invocation

Dwight K. Nelson

Hymn of Praise

Jesus Shall Reign Where'er the Sun • 227
Children's Songs Medley

Congregational Prayer

José, Sophia, and Jonah Bourget
Blest Be the Tie That Binds • st. 1 & 2 of 350

Worship in Music

Fruitful Trees • Kenneth Logan

Baby Dedication

Ciel Rose Kim Michel
presented by Robert Michel and Hyeran Kim

Offering

PMC Operating Expense • José Bourget
Here, O Lord, Your Servants Gather
Isao Koizumi / Philip Jones

Children's Story

Ben Martin

Scripture

Psalm 67 NIV • Bourget Family

Hymn of Preparation

Here, O Lord, Your Servants Gather • page 10

Sermon

"Engage Globally: How to Discover Blessed Reciprocity"
Dwight K. Nelson

Connect Card

Litany of Dedication—page 11

Jeannie Leiterman & Evelyn Savory

Closing Voluntary

Go Forth, Go Forth With Christ • John Darwall

PRESIDING PASTOR: Sharon Terrell; ORGANIST: Kenneth Logan
WORSHIP IN MUSIC: Ryan Clough, Héctor Flores, Ronald Knott, vocalists
WORSHIP LEADERS: José, Sophia, Jonah Bourget

MUSIC ALIVE

ACROSS CULTURES

Thirteen years after World War II ended, "Here, O Lord, Your Servants Gather" (see page 10) appeared in 1958 for a World Council of Christian Education Convention in Tokyo, Japan. Tokuo Yamaguchi wrote the text (Everett Stowe, translator) that relates closely to John 14:6: "I am the way, the truth, and the life..." Isao Koizumi wrote the melody, apparently founding it on a Japanese traditional melody. It uses a "gapped" scale of G-B flat-C-D-F. Gapped scales are

common in music of many diverse cultures. Of particular interest now, at the 70th anniversary of the atomic bombing of Hiroshima and Nagasaki, is that according to one commentator, "Stanza three opens with what I believe is a thinly veiled reference to the destruction of the atom bomb: 'Nature's secrets open wide...'" The melody today occurs both for congregational singing and arranged for organ. ■

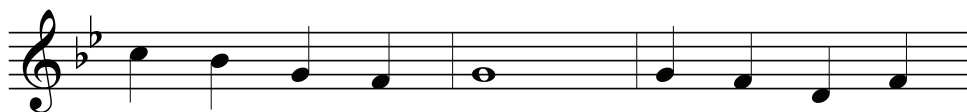
Here, O Lord, Your Servants Gather



1. Here, O Lord, Your ser - vants gath - er, Hand we link with
 2. Man - y are the tongues we speak, — Scat - tered are the
 3. Na - ture's se - crets o - pen wide, — Chang - es nev - er
 4. Grant, O God, an age re - newed, — Filled with death - less



hand; Look - ing toward our Sav - ior's cross, —
 lands, Yet our hearts are one in God, —
 cease; Where, O where, can wea - ry souls —
 love; Help us as we work and pray, —



Joined in love we stand. As we seek the
 One in love's de - mands. E'en in dark - ness
 Find the source of peace? Un - to all those
 Send us from a - bove Truth and cour - age,



realms of God, — We u - nite to pray:
 hope ap - pears, — Call - ing age and youth:
 sore dis - tressed, — Torn by end - less strife:
 faith and power — Need - ed in our strife:



Je - sus, Sav - ior, guide our — steps, For You are the Way.
 Je - sus, teach - er, dwell with — us, For You are the Truth.
 Je - sus, heal - er, bring Your — balm, For You are the Life.
 Je - sus, Mas - ter, be our — way, Be our truth, our life.

Text: Tokuo Yamaguchi, tr. Everett Stowe, copyright 1958 The United Methodist Publishing House. CCLI license #392652.
 Melody: Isao Koizumi (arr.), copyright 1958. PMC bulletin printing for 8/15/15 by permission of Hiroshi Koizumi.

LITANY OF DEDICATION

PSALM 67

PASTOR: On this eve of new beginnings at Andrews University, let us “engage globally” through this prayer of dedication.

FACULTY/STAFF: “May God be gracious to us and bless us and make His face shine on us—so that Your ways may be known on earth, Your salvation among all the nations.” (v 1-2)

PASTOR: Are we asking the God of heaven to bless this university, so that the world might take note of His blessings and inquire of our God?

FACULTY/STAFF: We are.

PASTOR: Then we must truly “engage globally”—and we must pray on.

FACULTY/STAFF: “May the peoples praise you, O God; may all the peoples praise you.” (v 3)

CONGREGATION: “May the nations be glad and sing for joy, for you rule the peoples with equity and guide the nations of the earth.” (v 4)

FACULTY/STAFF: “May the peoples praise you, O God; may all the peoples praise you.” (v 5)

CONGREGATION: “The land yields its harvest; God, our God blesses us.” (v 6)

PASTOR: And why on this day do we pray for the blessings of our God?

FACULTY/STAFF/CONGREGATION: “May God bless us still, *so that all the ends of the earth will fear him.*” (v 7)

PASTOR: Amen. May God answer our prayer of dedication this day. And may “the Lord bless you and keep you; the Lord make His face shine upon you, and be gracious to you; the Lord lift up His countenance upon you, and give you peace, both now and forevermore.” (Numbers 6:24-26)

ALL: Amen.

LITANY OF DEDICATION

PSALM 67

PRESIDENT: On this eve of new beginnings at Andrews University, let us “engage globally” through this prayer of dedication.

FACULTY/STAFF: “May God be gracious to us and bless us and make His face shine on us—so that Your ways may be known on earth, Your salvation among all the nations.” (v 1-2)

PRESIDENT: Are we asking the God of heaven to bless this university, so that the world might take note of His blessings and inquire of our God?

FACULTY/STAFF: We are.

PRESIDENT: Then we must truly “engage globally”—and we must pray on.

FACULTY/STAFF: “May the peoples praise you, O God; may all the peoples praise you.” (v 3)

CONGREGATION: “May the nations be glad and sing for joy, for you rule the peoples with equity and guide the nations of the earth.” (v 4)

FACULTY/STAFF: “May the peoples praise you, O God; may all the peoples praise you.” (v 5)

CONGREGATION: “The land yields its harvest; God, our God blesses us.” (v 6)

PRESIDENT: And why on this day do we pray for the blessings of our God?

FACULTY/STAFF/CONGREGATION: “May God bless us still, so that all the ends of the earth will fear him.” (v 7)

PASTOR: Amen. May God answer our prayer of dedication this day. And may “the Lord bless you and keep you; the Lord make His face shine upon you, and be gracious to you; the Lord lift up His countenance upon you, and give you peace, both now and forevermore.” (Numbers 6:24-26)

ALL: Amen.

FALL FELLOWSHIP DEDICATION

CONNECT • GROW • SERVE • GO

As We Begin

Jesu, Jesu, Fill Us With Your Love • Ghanaian melody / Robert Powell

Praise

Prayer

Andrea Luxton

Tithes & Offering

Here, O Lord, Your Servants Gather • Isao Koizumi / Philip Jones

Children's Story

Ben Martin

Scripture

Psalm 67 NIV • June Price, José Bourget

Worship in Music

Fruitful Trees • Kenneth Logan

Sermon

"Engage Globally: How to Discover Blessed Reciprocity"
Dwight K. Nelson

Connect Card

Litany of Dedication—page 12

Niels-Erik Andreasen with Jean-Irés & Debbie Michel

As We Depart

Go Forth, Go Forth With Christ • John Darwall

WORSHIP DIRECTOR: José Bourget; ORGANIST: Kenneth Logan
WORSHIP IN MUSIC: Ryan Clough, Héctor Flores, Ronald Knott, vocalists

WE STUDY

CONNECT • GROW • SERVE • GO

Song Service

Ben Shelley

Welcome

Thomas Baker

Special Feature

Missions

Offertory

Children of the Heavenly Father • Traditional Swedish Melody

Bible Study

“Jesus: The Master of Missions” • Classes

Theme Song

Make Me a Blessing

Make me a blessing; make me a blessing.
Out of my life may Jesus shine.
Make me a blessing; O Savior, I pray.
Make me a blessing; to someone today.

“Make Me a Blessing,” Ira Bishop Wilson
©1924, Renewed 1952 Word Music, LLC; Used by Permission. CCLI License #392652

Benediction

Ben Shelley

ORGANIST: Kenneth Logan

See page 22/23 for Sabbath School directory & map



BCYF HEALTH TENT

BY GIVAN HINDS

For over 40 years, the Health Tent has been a haven of solace for many BCYF attendees. From free massages and cool water, to children's activities, many have enjoyed the services offered from energetic volunteers, and have found the health education to be informative and useful in daily living.

Our volunteers have ranged from professionals (seasoned nursing and public health specialists, medical doctors and practitioners, as well as physical and massage therapists) to students, youth, and senior citizens who are health enthusiasts, and any others who want to see the Berrien County community live healthier lives!

Volunteer positions include Kids' Zone personnel, Health Age Counselors, Data Entry specialists, and NEWSTART station attendants. You can be part of this expe-

rience by volunteering to share the health message with those who have never heard it, and remind others of its longstanding benefits! Simply fill out the volunteer sign-up form found at www.ichoosereathealth.com.

Thank you for your willingness to contribute to the health of the Berrien County community! ■

FOR MORE INFORMATION:
Givan Hinds • 269.471.3254
givanhinds@gmail.com

PIONEER PEOPLE**SUNSET TODAY** • 8:49
SUNSET NEXT FRIDAY • 8:39

SUBMIT announcements by emailing bulletin@pmchurch.tv or by going to www.pmchurch.org and click on "submit a bulletin announcement." Requests must be received **Monday by 5:00 PM** for consideration.

WEEK AT A GLANCE

| SATURDAY |

FAMILY VESPERS

7:30 PM • PMC YOUTH CHAPEL

| WEDNESDAY |

PATHFINDER REGISTRATION

6:30 PM • PATHFINDER BUILDING

PIONEER PULPIT

| 08 • 22 |

DWIGHT K. NELSON

New Student Welcome: "Engage Globally:
How to Join the New Legion—Clothed, in
Your Right Mind and Sent"

| 08 • 29 |

DWIGHT K. NELSON

"The Pugwash Factor:
How to Turn Mission into Possible"

Sanctuary Flowers

Today's flowers are given by Paul Arnold to his sweet wife Doris for their 60th wedding anniversary!

Family Vespers

TODAY • 7:30 PM
PMC YOUTH CHAPEL

Jamie and Shallena Crouse will share stories from the first mission hospital established in Malawi one hundred years ago.

Fall GROW Group Leaders

Only one more day! The deadline for signing up your GROW Group is tomorrow. Go to www.pmchurch.org/newgrow-group to add your group info and be included in our Fall 2015 catalog. Groups will meet from September 27 to December 13. Questions? Please send them to growgroups@pmchurch.org.

We Mourn

Today we mourn with two families that have lost parents. Gregg Nicholas mother, Bertha Nicholas, died on Tuesday, August 4, in Coloma, Michigan. Private family time will be held at a later date. Don Wilson's father, Norman Wilson, died on Sabbath, August 8, in Macon, Georgia. A memorial service will be held at a later date. With both these families we look forward to the resurrection morning. "Even so, come Lord Jesus."

**2015 BCYF
Health & Wellness Exhibit**
AUGUST 16-22

This year's health tent is fitness-focused. We need volunteers for the following positions: Blood-pressure Readings, Welcoming outside, Welcoming inside, Massage sign-in, Registration/waiver, Data entry, Set-up, Take-down, Host/hostesses, Prayer Tree Team, Massage Therapists/Physical Therapists, Personal Trainers, group fitness instructors, physical education teachers, or other related fields, and Kids' station. If you are interested in any of these positions please contact Givan Hinds: givanhinds@gmail.com, 269.471.3254, or 646.573.0620.

Pathfinder Registration
AUGUST 19 • 6:30 TO 8:30 PM
PATHFINDER BUILDING

The Evergreen Pathfinder Club is starting a new year! Come register with us at the Pathfinder Building, located near the Dairy Farm. Join us for a year of friendships, experiences, honors, and learning about God. We can't wait to see you there! For more information, email evergreenpathfinders@gmail.com.

New Student Welcome Lunch

We need 100 families to help extend a warm welcome to our new University Students with a meal after second service on August 22. Each family is asked to bring a complete meal of lasagna or a pasta dish (vegetarian or vegan), salad, and garlic bread to feed 10 to 12 people. Two or three friends could also band together and help provide this complete meal. Drink and dessert will be provided. To participate, please email davis@pmchurch.org or call 471.3150.

Nominating Committee
FIRST READING

Host/Hostess Sanctuary Doors:

Jay Godfrey
Emilsa Gomez
Colleen Kubiak
Karen Waterbrook

H/H Sanctuary Doors Coordinator:

Roshani Abbadasari

H/H Sanctuary Doors Assoc. Dir.:

Wanda Poole

Deacon:

Angela Butnaru
Sergio Butnaru
Eduin Caballero

Deacon Coordinator, 2nd Service:

Ivette Ruban

Deacon Coordinator, 1st Service:

Cleon White

Elder

Celesta Burt
Jose Diaz
Dionne Gittens
Joanna Moses
Beverly Peck
Chuck Peck
Andrew Simpson Jr.
Michael Wahlen
Peggy Whidden
Woody Whidden

Media Team Volunteers

The PMC Media Team is looking for volunteers for the coming school year. We are looking for people willing to help in multiple areas including with the PA/audio systems, operating cameras for the telecast, and putting together and operating the sermon graphics. Experience is welcome but not necessary. Take this opportunity to discover what happens behind the scenes of a global media ministry. To volunteer, contact Jonathan LaPointe at lapointe@pmchurch.tv.

Alumni Lend-a-Hand Move-In

AUGUST 16 • 9:00 AM-8:00 PM

MEET AT THE WHITE TENT IN FRONT
OF LAMSON HALL

Join us for what has become a memorable and heartwarming tradition—assisting new students as they move into the residence halls. Thank you in advance for helping make a positive impact on these students and their families. If you have a hand truck and/or other equipment to move heavy items, please bring it with you.

Mission Trip to Honduras 2015

Join a team of youth missions volunteers going to the REACH orphanage in Honduras December 11–22. The team will conduct a special day camp ministry for about 170 children. There is still some room if you are a young person (or young at heart) interested in service and missions. The application deadline is September 4 so contact Glenn Russell (glenn@andrews.edu) right away for more information. *—Sponsored by PMC—Youth Missions*

PMC Prayer Teams

The PMC Prayer Teams are in need of your participation during 1st or 2nd service. We gather each Sabbath in the Prayer Room (located behind the big glass window on the piano side of the sanctuary) to pray for the abiding presence of the Holy Spirit on each aspect of the church service. We are not isolated from the happenings in the Sanctuary, for we see and hear the whole service and are blessed along with the congregation. If the Holy Spirit impresses you to join us, or you want additional information, please call Katherine Smith at 471.1502.

Compass Collegiate Sabbath School

If you are interested in studying the Bible during Sabbath School on Sabbath morning together with fellow students, Compass is the place for you. We begin by singing and then focus on a mission project, then transition to exploring the Scriptures. All semester long, we meet every Sabbath from 10:30-11:30am in the Religion and Biblical Languages Department of Buller Hall. Erhard Gallos and Glenn Russell are the co-ordinators of Compass. Contact Erhard Gallos for more information at gallos@andrews.edu or by calling 269.471.3186.

Medical Evangelism Conference—CrossTraining

Are you a physician or dentist interested in learning how to effectively share Christ with your patients? Then the AMEN conference is for you! Join us October 29 through November 1, 2015 (Thursday evening to Sunday morning) in Hilton Head Island, SC. We will discuss how health professionals can be 'CrossTrained' meeting not only their patients' physical needs but their spiritual needs also. Together we will learn how to focus our attention, and the attention of our patients, on God's heart of love as revealed in the Cross of Christ. Featured Speakers include: Pastors Steven Grabiner and Mark Finley; Physicians Peter Landless & Kelly Kinsley; Dentists Steve Chang & Ronald Hold, and many others. All physicians, dentists, healthcare professionals, and pastors are welcome. For more information please visit www.amensda.org or call 530.883.8061.

pioneer memorial church
FAMILY FINANCES

As of July 31, 2015

Includes July online giving

MASTER PLAN OF EVANGELISM



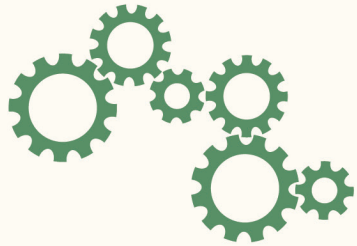
LINE 5 IN YOUR TITHE ENVELOPE

GOAL TO-DATE	80,640
RECEIVED TO-DATE	52,808
RECEIVED TO-DATE 2014	61,794

OPERATING FUND

LINE 2 IN YOUR TITHE ENVELOPE

GOAL TO-DATE	351,930
RECEIVED TO-DATE	324,230
RECEIVED TO-DATE 2014	319,127



CHRISTIAN EDUCATION



LINE 3 IN YOUR TITHE ENVELOPE

GOAL TO-DATE	122,130
RECEIVED TO-DATE	113,725
RECEIVED TO-DATE 2014	105,024

| PASTORS | | STAFF |

Chaplain / Pioneer

José Bourget • 471.6254
bourget@pmchurch.org

Admin. Assistant

Autumn Mincinoiu
autumn.m@pmchurch.org

Discipleship / GROW Groups

Sabine Vatel • 471.6153
vatel@pmchurch.org

Admin. Assistant

Lailane Legoh • 471.3543
legoh@pmchurch.org

Harbor of Hope

Taurus Montgomery • 269.923.9274
montgomery@pmchurch.org

Interim Media Director

Jonathan LaPointe • 471.3678
lapointe@pmchurch.org

Lead Chaplain

June Price • 471.6282
madrigal@andrews.edu

Assistant Treasurer

JoAnn Siagian • 471.7656
siagian@pmchurch.org

Lead Pastor

Dwight K. Nelson • 471.3134
nelson@pmchurch.org

Bible Work Coordinator

Tabitha Umali • 269.340.2031
tabitha.umali@pmchurch.org

Pastoral Care

Don Dronen • 471.3133
dronen@pmchurch.org

Clerk

Jackie Bikichky • 471.3972
bikichky@pmchurch.org

Stewardship

Sharon Terrell • 471.6151
terrell@pmchurch.org

Communications

Rebecca Coleman
rebecca.coleman@pmchurch.org

This Generation Evangelism

Rodlie Ortiz • 471.6154
ortiz@pmchurch.org

Executive Assistant

Sherrie Davis • 471.3134
davis@pmchurch.org

Youth Ministries

Ben Martin • 471.6176
martin@pmchurch.org

Graphic Designer

Rachelle Offenback • 471.3647
bulletin@pmchurch.org

Media Ministries

471.3246

Maintenance

Larry White • 471.3649
white@pmchurch.org

Music

Kenneth Logan • 471.3231
logan@pmchurch.org

| MINISTRIES | | SABBATH SCHOOL |

Adventurers

Daniel González • 423.432.0780
adventurers@pmchurch.org

Adult

Judy Aitken • 240.7997
adultss@pmchurch.org

Deacons

Milan Vajdic • 471.0328
deacons@pmchurch.org

Birth - Grade 1

Claudia Davisson • 269.208.7081
bg1@pmchurch.org

Deaconesses

Vida Giddings • 473.2175
deaconesses@pmchurch.org

Grade 2 - Earliteen

Robert Barnhurst • 473.1613
g2teen@pmchurch.org

Elders

Russell & Cynthia Burrill • 473.3738
elders@pmchurch.org

| OUR SCHOOLS |

Andrews Academy

Jeannie Leiterman • 471.3140
leiterma@andrews.edu

GROW Groups

growgroups@pmchurch.org

Health

health@pmchurch.org

Andrews University

471.7771 or 800.253.2874
enroll@andrews.edu

Pathfinders

Matthew Johnson • 240.755.2661
evergreenpathfinders@gmail.com

Ruth Murdoch / K-8

Evelyn Savory • 471.3225
esavory@andrews.edu

Public Address

Joel Kitchen
audio@pmchurch.org



PIONEER MEMORIAL CHURCH

8655 UNIVERSITY BOULEVARD, BERRIEN SPRINGS, MI 49103

OFFICE HOURS

Monday – Thursday (8 to 5) • Friday (8 to 12)

PHONE – 269.471.3133

FAX – 269.471.6152

LIVE STREAMING

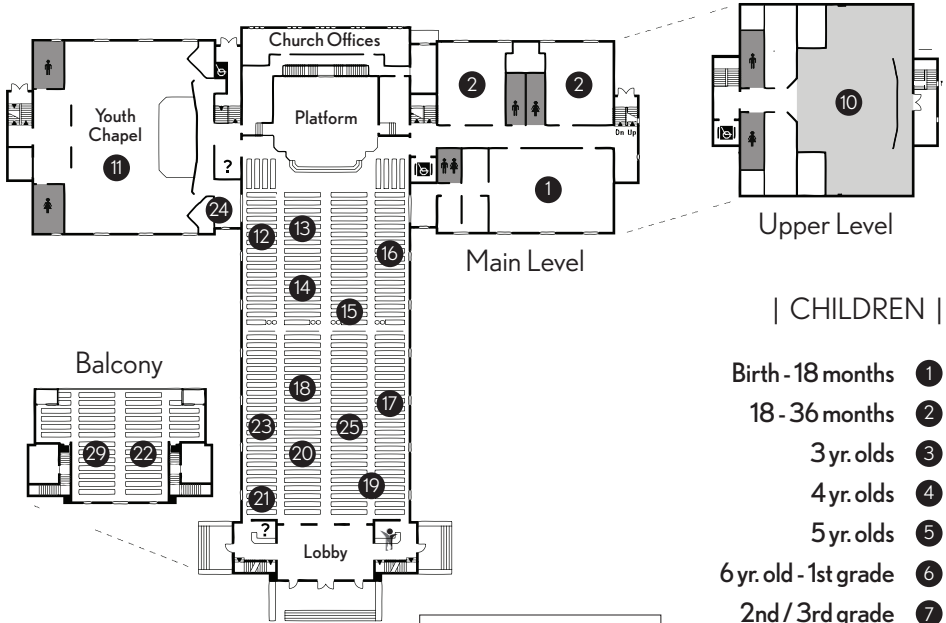
www.pmchurch.tv
Sabbath 11:45 AM

ONLINE

www.pmchurch.org
www.pmchurch.tv

RADIO

WAUS – 90.7 FM
Sabbath 11:30 AM



| CHILDREN |

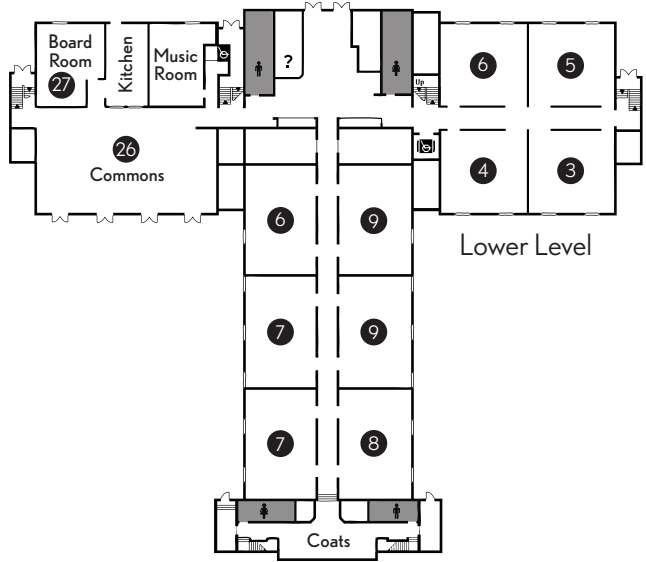
- Birth - 18 months ①
- 18 - 36 months ②
- 3 yr. olds ③
- 4 yr. olds ④
- 5 yr. olds ⑤
- 6 yr. old - 1st grade ⑥
- 2nd / 3rd grade ⑦
- 4th grade ⑧
- 5th / 6th grade ⑨
- Earliteen ⑩
- Youth ⑪

| ADULT |

- ⑫ Group 1
- ⑬ Group 2 (Portuguese/Brazilian)
- ⑭ Group 3
- ⑮ Group 4 (Yugoslavian)
- ⑯ Group 5
- ⑰ Group 6
- ⑱ Group 7
- ⑲ Group 8
- ⑳ Group 9 (Spanish)
- ㉑ Group 10
- ㉒ Group 11 (Balcony)
- ㉓ Group 12 (French)
- ㉔ Conference Room
- ㉕ Indonesian Class
- ㉖ Something In Common
- ㉗ SDA Beliefs

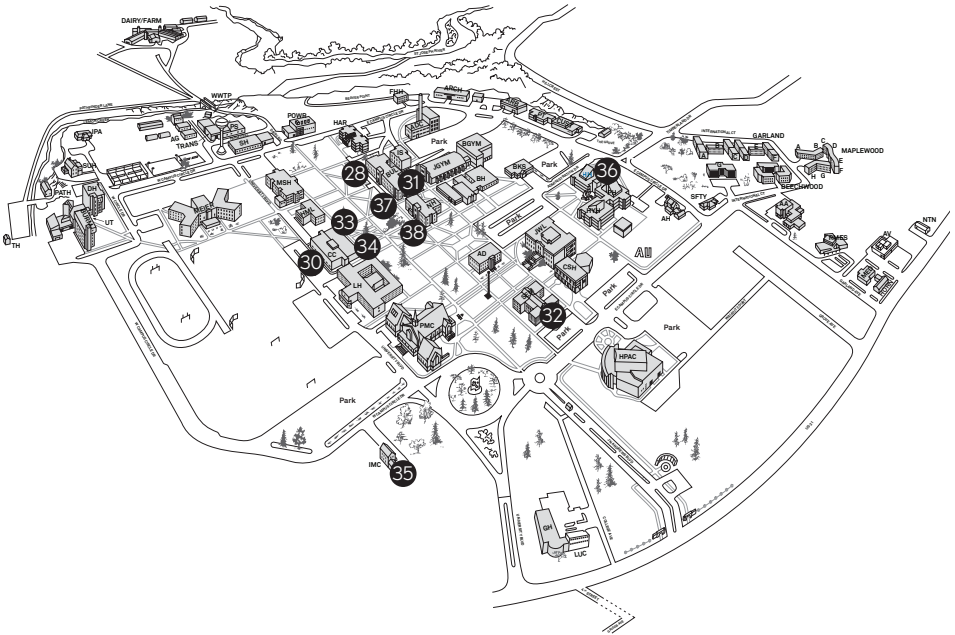
| KEY |

- ? Welcome Centers
- ⬇ Elevators
- ♿ Restrooms
- 👤 Children's Activities & Lending Library



Lower Level

Andrews University Campus Map



| COLLEGIATE |

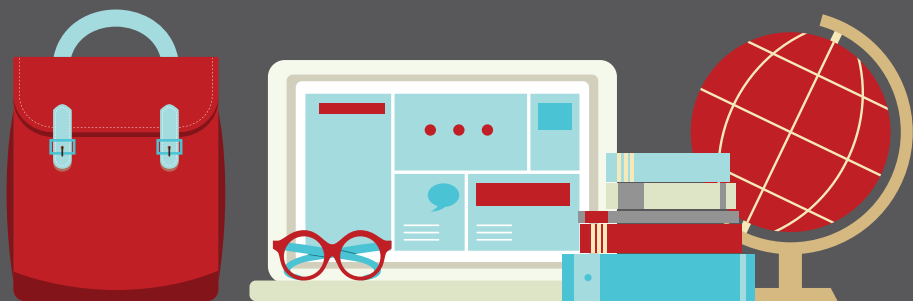
- 28 H&M (Hispanic - Religion Amphitheater)
- 29 People on the Move (PMC)
- 30 University Sabbath School (Dining Services)
- 31 Compass Sabbath School (Buller - Religion Dept.)

| SEMINARY |

- 32 N108 (Collegiate)
- N110
- N120 (New Life Church Choir)
- N150
- N211 (Small Group)
- N235
- N310 (Russian)
- N335 (Spanish)
- S340 (Upper Room)

| ADULT @ AU |

- 33 Main Lounge
- 34 Faculty Lounge
- 35 Back to Basics
- 36 Living Word Fellowship
- 37 Current Events (Buller - 135)
- 38 Bible Journey (Nethery - 143)



JOIN OUR FAMILY

You will be blessed by what Andrews Academy has to offer



We seek to inspire our students to think deeply, live fully, serve unselfishly and to honor God completely.



ANDREWS ACADEMY

8833 Garland Ave., Berrien Springs, MI 49104

269.471.3138 • academy@andrews.edu

School starts August 24

www.andrews.edu/aa | Click on "apply now"