

PIONEER

---

# CONNECT

FEBRUARY 17, 2018



BE STILL

WE WORSHIP • PAGE 8




# WELCOME

*to Pioneer*

Welcome to Pioneer Memorial Church. This morning you will experience a different sort of worship service. Today the Pathfinder club is leading our church service. If you are unfamiliar with Pathfinders, then you are in for wonderful surprise! Pathfinders is a club operated by the Seventh-day Adventist church that is specifically designed to disciple our young.

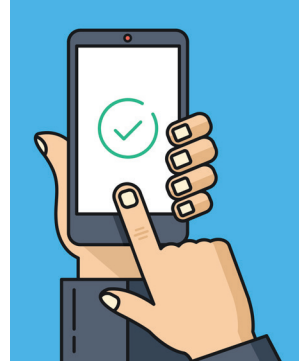
Pioneer Memorial Church and Pathfinders share a rich history intertwined with evangelism and discipleship. So this morning as we continue this tradition, you are invited on the journey. Discipleship by nature is a relational teaching that involves the entire community. This service is not only an opportunity to see God working in and through the young. It serves as a reminder to pray for the young and to give to the next generation, both in service and in offering, so that this discipleship continues what others invested in each of us.

-Ben Martin

 <b>PIONEER MEMORIAL CHURCH</b> 8655 UNIVERSITY BOULEVARD, BERRIEN SPRINGS, MI 49103		
<b>OFFICE HOURS</b> Monday – Thursday (8 to 5) • Friday (8 to 12)		<b>PHONE</b> – 269.471.3133 <b>FAX</b> – 269.471.6152
<b>LIVE STREAMING</b> <a href="http://www.pmchurch.org">www.pmchurch.org</a> Sabbath 11:45 AM	<b>ONLINE</b> <a href="http://www.pmchurch.org">www.pmchurch.org</a> <a href="http://www.newperceptions.tv">www.newperceptions.tv</a>	<b>RADIO</b> WAUS – 90.7 FM Sabbath 11:30 AM
 <b>CONNECT CARD</b> Scan this code to receive this week's Connect Card.		 <b>FIND A SABBATH SCHOOL</b>

# FIND IT HERE

CONNECT • GROW • SERVE • GO



---

**4**

**PIONEER LIFE**  
Evergreen Pathfinder  
Bible Experience

---

---

**10**

**WE STUDY**  
"Honesty with God"

---

---

**12**

**ANNOUNCEMENTS**

---

---

**6**

**PIONEER LIFE**  
Leaders in Training

---

---

**11**

**MEMBERSHIP  
TRANSFERS**

---

---

**14**

**FAMILY FINANCES**

---

---

**8**

**WE WORSHIP**  
9:00 and 11:45 AM  
Service

---

---

**17**

**CONTACTS**

---

# EVERGREEN PATHFINDER BIBLE EXPERIENCE



BY RYAN CLOUGH

Pioneer Memorial Church has a long history with Pathfinder Bible Bowl, Pathfinder Bible Achievement (PBA), and, more recently, Pathfinder Bible Experience (PBE). Beginning in the spring of 2000, the final (NAD) level of Bible Bowl (soon to become

Pathfinder Bible Achievement) was held here at PMC, with eight teams, representing four unions, in attendance. As the program grew, more teams were making their way to Berrien Springs for the final each spring. As the host church, we had the privilege

of hosting Pathfinders from across the country, but we were missing out on part of the experience—that of traveling somewhere to join with other Pathfinders who had been working on the same goal for several months.

Six years ago, another chapter was launched with the development of Pathfinder Bible Experience. While very similar to PBA, PBE had slightly different rules. Two of the most significant changes were

allowing multiple teams per club and the decision to hold the NAD final on a rotating schedule, so each Union would get a chance to host the event. That first year (2013) we joined

39 teams at Union College for the final event. The next year, we traveled to the Washington, DC, area, where there were almost 90 teams. Participation from across the country (as well as Canada and even the UK) has grown, to where there are now over 120 teams advancing to the final level each year. Now, in addition to hiding God's word in their heart, our youth are gaining a sense of SDA community as they come together with other Adventist youth at these annual events. The added travel component also adds to the memories they will carry through their lives. Some of these memories: seeing the nation's capital (2014); seeing the longhorn cattle run through the streets in Fort Worth, TX (2015); and seeing God's amazing power in nature at the Grand Canyon (2016).

For several years, while Pioneer Me-

morial Church hosted the annual NAD final event, the expense for this event was limited. However, when the travel element was added, the expense greatly increased. Part of the difficulty with planning for this expense, though, is that we do not know if we will advance to the final level until after the third (union) event, which is generally held 4 weeks before the NAD final. To help raise funds specifically for our Pathfinder Bible Experience program,

we would like to launch an annual verse-a-thon. Similar to a walk-a-thon, we are looking for people to sponsor our PBE members with a specific amount per verse mem-

orized. We feel this can benefit in many ways. First, and most obvious, is the fundraising aspect. Second, knowing that members are sponsoring them will help serve as an additional motivator to memorize their verses. Third, in partnering with these youth, you are showing your support of the future of our church. To help ensure these funds are allocated for PBE, we have set up a dedicated fund, that will carry over from year to year (in case we do not make it to the finals, or if we are blessed with excess in one year). Will you partner with us? If so, mark your Connect Card and we will email you details on how to sponsor a PBE team member. ■

*Ryan Clough is the Assistant TLT Director & PBE Coach of Evergreen Pathfinder Club.*

---

## IN PARTNERING WITH THESE YOUTH, YOU ARE SHOWING YOUR SUPPORT OF THE FUTURE OF OUR CHURCH

---

# LEADERS IN TRAINING

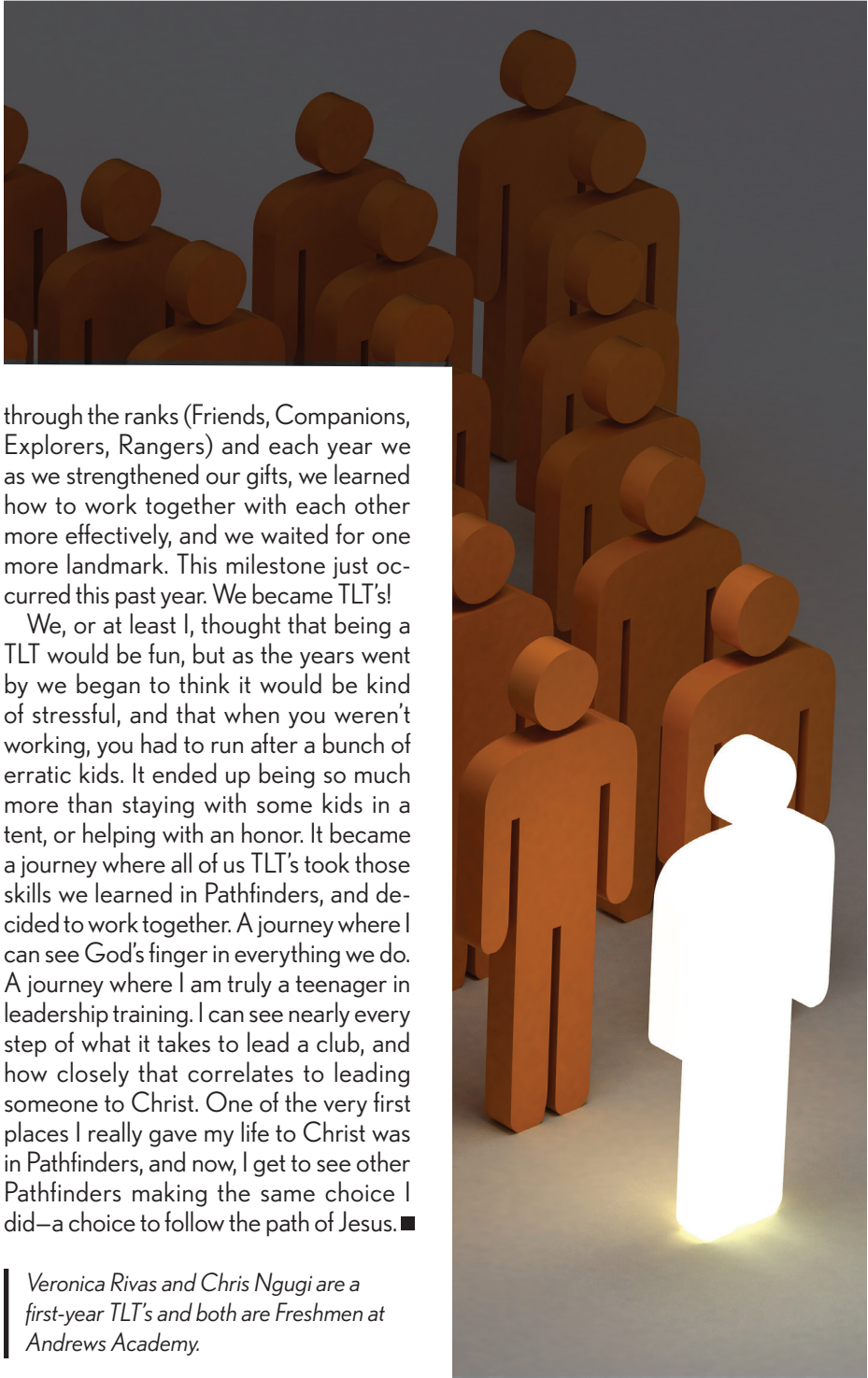
**P**ioneer Evergreens club believes in the training of its young leaders through the Teen Leadership Training (TLT) program. Here are two responses from current leaders in training.

**Veronica Rivas's response:** Recently I have gone through the transition from Pathfinder to TLT, so now I can see things from the perspective of a leader. Being a TLT means being involved and ready to take the lead in a situation or activity you may be needed in. I have realized that being a leader is more than just guiding others and being an example, it's a whole lot of planning and frustration. Sometimes things do not go the way you want them to, but you have to learn to make the best out of it. The transition has not been hard, but rather eye-opening. I like my new role because I get to interact with others in a different way, and I feel like I am able to help more. Being a leader hasn't always been my strength, but this program has pushed me out of my comfort zone a bit.

I think that this program helps all of us to see each other in a different light. While training to be leaders we can see each other's weaknesses and strengths. The TLT program has helped me to understand more about teamwork, humility, and how to interact with others. Being a TLT doesn't mean you are completely different from a Pathfinder. In this program you have the same activities and similar requirements,

but the biggest difference is that while trying to accomplish all of that you also have to consider others and a way to help those who need you. At the end of the day, I think that being a TLT just means being willing to dedicate some time to help others whenever they need you, whether it's in your club or in your daily life.

**Chris Ngugi's response:** My journey started in Adventurers. In this fun and helpful program, my Adventurer friends and I started to receive pins and patches. We began to enjoy exploration in this environment, and we could truly begin to cultivate our talents. This was an amazing place to be, but there was something that we were all looking forward to, something we all so strongly anticipated and were excited for. This thing was Pathfinders. When we finally got there, we were so hyped! We were finally one of the "big kids." We got different shirts and belts, our honors looked different, we went on real campouts, we slept in real tents (which wasn't as comfortable as we had hoped), but we really had fun. This first year we all got a chance to flourish. Some of us received the opportunity to speak at church for the first time, some of us found out we had a gift to lead, some of us found out we really enjoy the outdoors, and we all got the chance to learn how to work as a group, each of us with his/her own talents to contribute. During the next few years we all moved up



through the ranks (Friends, Companions, Explorers, Rangers) and each year we as we strengthened our gifts, we learned how to work together with each other more effectively, and we waited for one more landmark. This milestone just occurred this past year. We became TLT's!

We, or at least I, thought that being a TLT would be fun, but as the years went by we began to think it would be kind of stressful, and that when you weren't working, you had to run after a bunch of erratic kids. It ended up being so much more than staying with some kids in a tent, or helping with an honor. It became a journey where all of us TLT's took those skills we learned in Pathfinders, and decided to work together. A journey where I can see God's finger in everything we do. A journey where I am truly a teenager in leadership training. I can see nearly every step of what it takes to lead a club, and how closely that correlates to leading someone to Christ. One of the very first places I really gave my life to Christ was in Pathfinders, and now, I get to see other Pathfinders making the same choice I did—a choice to follow the path of Jesus. ■

*Veronica Rivas and Chris Ngugi are a first-year TLT's and both are Freshmen at Andrews Academy.*

# WE WORSHIP

CONNECT • GROW • SERVE • GO

<b>As We Begin</b>	<i>Be Still, My Soul, for God Is Near</i> • David Johnson
<b>Welcome</b>	Ben Martin
<b>Processional</b>	<i>Oh, We Are the Pathfinders Strong</i> • Henry Bergh
<b>Pathfinder Pledge &amp; Law</b>	*Lisabeth Tuffour & Chris Gomez **Kirabo Bolanos-Weston & Sam Rivas
<b>Song Service</b>	<i>Open the Eyes of My Heart</i> • <i>Holy, Holy, Holy</i> • 73 <i>It is Well With My Soul</i> • 530
<b>Congregational Prayer</b>	Veronica Rivas
<b>*Baby Dedication</b>	Joanna Belle Greene presented by David & Adrienne Greene <i>with Ben Martin</i>
<b>**Baptism</b>	Uziel Orellana <i>with Pastor Michael Orellana</i>
<b>Call for Tithes &amp; Offerings</b>	Da'Quan McClean <i>Be Still My Soul</i> • arr. Priscilla Murphy
<b>Children's Story</b>	*Elise Brodie, **Alex Wright
<b>Scripture Reading</b>	*Kelsey Rumbidzai Msipa, **Kwesi Tuffour • Ps. 46:10
<b>Sermonette</b>	Kofi Amponsah
<b>Worship in Music</b>	<i>Still</i> • Reuben Morgan
<b>Sermonette</b>	Ian Ochieng
<b>Connect Card</b>	Maureen Raj
<b>Tithes &amp; Offering Collection</b>	<i>Be Still My Soul</i> • 461
<b>Blessing</b>	Maureen Raj
<b>As We Depart</b>	<i>Trumpet Tune</i> • David Johnson



# PATHFINDER PLEDGE & LAW

## PLEDGE

By the grace of God,  
I will be pure, and kind, and true.  
I will keep the Pathfinder Law.  
I will be a servant of God  
and a friend to man.

## LAW

Keep the morning watch  
Do my honest part  
Care for my body,  
Keep a level eye  
Be courteous and obedient  
Walk softly in the sanctuary,  
Keep a song in my heart,  
Go on God's errand.

PRESIDING PASTOR: Ben Martin; ORGANIST: Kenneth Logan

PROCESSIONAL: American Flag—\*Kimoni McClean, \*\*Nathaniel Amaya; Pathfinder Flag—\*Adwoa Tuffour, \*\*John Alvarez-Wilches; PIANO: Jamison Moore; VIOLIN: Hannah and Huldah Nyamweya;

VOCALS: Ama Amponsah, Danielle Atangana, Chiara Diaz, Natasha Diaz, Danielle Gittens, Christiana Michel, Aileen Mongkau, Jennifer Morara, RaeAnne Prentice, Lisabeth Tuffour;

WORSHIP IN MUSIC: Christiana Michel, Zothile Sibanda, Ayana LeBlanc, Stephanie Fereirra, Melannie Fereirra; OFFERTORY: Jon Clough (piano), Jamison Moore (cello)

---

## MUSIC ALIVE

### "BE STILL"

**T**he melody of hymn no. 461, "Be Still, My Soul," branches from a composition for orchestra by Finnish composer Jean Sibelius. This melody occurs in that composition in a context that has many elements that are far from serene. As one commentary has it, "Most of the piece is taken up with rousing and turbulent music, evoking the national

struggle of the Finnish people. Towards the end, a calm comes over the orchestra, and the serenely melodic Finlandia Hymn is heard." The melody of this hymn apparently first appeared in print as a hymn tune in a Scottish hymnal in 1927. The words of hymn no. 461 are an English rendering from Katharina von Schlegel's German text from about two centuries earlier. ■

# WE STUDY

CONNECT • GROW • SERVE • GO

<b>Song Service</b>	Christine Carroll
<b>Opening Song</b>	"Let Your Heart Be Broken" • 575
<b>Scripture &amp; Prayer</b>	2 Cor. 8:1-4 • Judy Aitken
<b>Welcome</b>	Judy Aitken
<b>Mission Feature</b>	"The Best Christmas Present Ever" • Heaven Shin
<b>Offertory</b>	"This Little Light of Mine" • arr. Hale Smith
<b>Bible Study</b>	Classes • "Honesty with God"
<b>Theme Song</b>	<i>Make Me a Blessing</i>

Make me a blessing; make me a blessing.  
Out of my life may Jesus shine.  
Make me a blessing; O Savior, I pray.  
Make me a blessing; to someone today.

"Make Me a Blessing," Ira Bishop Wilson  
©1924, Renewed 1952 Word Music, LLC; Used by Permission. CCLI License #392652

<b>Benediction</b>	Christine Carroll
--------------------	-------------------

ORGANIST: Kenneth Logan  
OFFERTORY: Fabio Siniscarchio, tenor, Dido Cortez, piano

**SUBMIT** bulletin announcements by visiting our form online at [www.pmchurch.org/announcements/submit](http://www.pmchurch.org/announcements/submit). Requests must be received Monday by 5:00 PM for consideration.

**NEXT WEEK'S OFFERING**  
MICHIGAN ADVANCE PARTNERS

**SUNSET TODAY** • 6:18  
**SUNSET NEXT FRIDAY** • 6:27

## PIONEER PULPIT

| 02 • 24 |

**DWIGHT K. NELSON**

"King of Hearts: Can You Feel the Love?"

| 03 • 03 |

**DWIGHT K. NELSON**

"Church of Hearts: Can You Feel the Love?"

## FINANCIAL FEATURE

### CHURCH BUDGET

During the winter period that is still ongoing what a great feeling it is when we come into the sanctuary on Sabbath morning to find lights and heat on. When we see the Pathfinders and Adventurers leading or participating in the church service we not only admire their beautiful attire but are proud of them because they are our very own. There are many other ministries and local needs here at Pioneer and today's offering, which is designated for church budget, will help in one form or another, to fund them. Remember, "... God loves a cheerful giver." 2 Corinthians 9:6

### The Mysterious Note Movie Premiere

TONIGHT • 7:00 PM

HOWARD PERFORMING ARTS CENTER

The North American Division and One Mustard Seed have teamed up to produce this adventure/comedy feature film. Visit [www.howard.andrews.edu](http://www.howard.andrews.edu) for tickets.

### Blood Drive

FEBRUARY 20-21 • 1-7:00 PM

PMC COMMONS

Hope begins with you! Give blood and help save lives. To schedule an appointment, log onto [redcrossblood.org](http://redcrossblood.org) (sponsor code: Andrews University) or call 1-800-RED Cross (1-800-733-2767).

### Horn Lectureship Series: Persia Symposium

FEBRUARY 26 • 7:00 PM

SEMINARY CHAPEL

The Horn Museum and the Institute of Archaeology invite you to the "Persia Symposium," featuring research by students done under the direction of Dr. Constance Gane. This event is free and open to the public.

### Reggie and Ladye Love Smith

FEBRUARY 24 • 7:30 PM

HOWARD PERFORMING ARTS CENTER

Best known for their performances on Gaither Homecoming join Reggie and Ladye Love Smith, vocal powerhouses, at this concert.

### **Keys to Personal Revival and a Lifestyle of Vibrant Living in Christ**

MARCH 2 • 5:30 PM  
FIVE PINES MINISTRIES

Female spouses of seminary students and student women clergy are invited to a Prayer Retreat. Be prepared for an extraordinary-life changing experience with guest speaker and author Melody Mason of the GC Prayer Ministries Dept. Melody is the author of the bestselling book "Daring to Ask for More." Register at the NADEI Office in the Seminary Building.

### **Engaged Encounter**

MARCH 2-4 • 6:00 PM  
COUNCIL CHAMBER  
GRIGGS HALL

Engaged Encounter is a retreat weekend for engaged, recently married, or seriously dating couples. If you've talked about getting married, you should attend Engaged Encounter! Register now at [aee@andrews.edu](mailto:aee@andrews.edu) or call 269.815.8491.

### **New Member Orientation**

MARCH 3 • 10:30 AM  
PMC BOARDROOM

If you have recently transferred your church membership, been baptized, joined by Profession of Faith, or enrolled at Andrews University, you are invited to attend the Pioneer new member orientation. We want to meet you, share the mission and vision of Pioneer with you, and introduce you to your pastors as we help you become better acquainted with your new church family. Register at [www.pmchurch.org/new-member](http://www.pmchurch.org/new-member) or call pastor Sabine or Gracie Gaytan via 269.471.3133.

### **Madagascar Project**

AU's Community & International Development dept. provides an opportunity for students to attend the Madagascar Study tour. The goal every year is to implement a humanitarian and development project. This year's project funds a SDA school, "La Chretienne" College. Students who attend are in need of supplies to make their education more successful. For more information about donating to these projects in Madagascar go to: <https://www.andrews.edu/agenda/44185>

Heart Your Family

SUBMIT YOUR  
FAMILY PHOTOS  
[PMCHURCH.ORG/  
HEARTYOURFAMILY](http://PMCHURCH.ORG/HEARTYOURFAMILY)

## | PASTORS |

**Chaplain / Pioneer**

José Bourget • 471.6254  
[bourget@pmchurch.org](mailto:bourget@pmchurch.org)

**Discipleship / GROW Groups**

Sabine Vatel • 471.6153  
[vatel@pmchurch.org](mailto:vatel@pmchurch.org)

**Harbor of Hope**

Taurus Montgomery • 269.210.6155  
[montgomery@pmchurch.org](mailto:montgomery@pmchurch.org)

**Lead Chaplain**

June Price • 471.6282  
[juneprice@andrews.edu](mailto:juneprice@andrews.edu)

**Lead Pastor**

Dwight K. Nelson • 471.3134  
[nelson@pmchurch.org](mailto:nelson@pmchurch.org)

**Stewardship**

Sharon Terrell • 471.6151  
[terrell@pmchurch.org](mailto:terrell@pmchurch.org)

**This Generation Evangelism**

Rodlie Ortiz • 471.6154  
[ortiz@pmchurch.org](mailto:ortiz@pmchurch.org)

**Youth Ministries**

Ben Martin • 471.6176  
[martin@pmchurch.org](mailto:martin@pmchurch.org)

**Media Ministries**

Richard Parke • 471.3246  
[parke@pmchurch.org](mailto:parke@pmchurch.org)

**Music**

Kenneth Logan • 471.3231  
[logan@pmchurch.org](mailto:logan@pmchurch.org)

## | STAFF |

**Admin. Assistant**

Lailane Legoh • 471.3543  
[legoh@pmchurch.org](mailto:legoh@pmchurch.org)

**Admin. Assistant / Clerk**

Gracie Gaytan • 471.3133  
[clerk@pmchurch.org](mailto:clerk@pmchurch.org)

**Receptionist**

Jackie Bikichky • 471.3133  
[bikichky@pmchurch.org](mailto:bikichky@pmchurch.org)

**Assistant Media Director**

Gaddiel Zelaya Martínez • 471.3678  
[zelaya@pmchurch.org](mailto:zelaya@pmchurch.org)

**Assistant Treasurer**

JoAnn Siagian • 471.7656  
[siagian@pmchurch.org](mailto:siagian@pmchurch.org)

**Executive Assistant**

Claudia Sowler • 471.3134  
[sowler@pmchurch.org](mailto:sowler@pmchurch.org)

**Graphic Designer**

Brittany Doyle • 471.3647  
[bulletin@pmchurch.org](mailto:bulletin@pmchurch.org)

**Maintenance**

Larry White • 471.3649  
[white@pmchurch.org](mailto:white@pmchurch.org)

# PMC 2017 YEAR END REPORT

Copies of the 2017 End of Year Data Summary and the 2018 Proposed Budget Summary are available at the reception desks in the Narthex, downstairs entrance and the Sanctuary reception area.

## 2017 Budget Summary

	Actual 2017	Budget 2017	Actual Allocation
<b>NET ASSET BEGINNING BALANCE</b>	\$846,332		
<b>INCOME</b>			
<i>Church Family Finance Goals</i>			
Church Operating	\$596,279	\$635,000	28.8%
Christian Education	202,555	205,294	9.8
Master Plan for Evangelism (MPE)	105,771	135,000	5.1
Building Fund	56,468	46,000	2.7
Student Aid	49,701	57,000	2.4
<b>Total Family Finance Goals</b>	<b>\$1,010,974</b>	<b>\$1,078,294</b>	<b>48.8%</b>
Other Evangelism/Harbor of Hope	289,488	215,645	14.0
Sabbath School	91,026	42,775	4.4
Youth/Outreach Ministries	173,841	129,393	8.4
Television/Media Ministry	321,365	261,000	15.5
Other Income	184,922	123,557	8.9
<b>TOTAL INCOME</b>	<b>\$2,071,616</b>	<b>\$1,850,664</b>	<b>51.2%</b>
<b>EXPENSES</b>			
Evangelism Programs	\$300,611	\$280,095	16.5%
Sabbath School	99,683	60,335	5.5
Youth/Outreach Min/GROW Groups	186,865	175,251	10.3
Christian Educ./Student Aid	314,870	319,994	17.3
Church Operations	370,427	430,366	20.4
Building/Maintenance	167,411	175,679	9.2
Television/Media Ministry	327,297	347,456	18.0
Other	50,186	69,100	2.8
<b>TOTAL EXPENSES</b>	<b>\$1,817,349</b>	<b>\$1,858,276</b>	<b>100%</b>
Net Increase (Decrease)	254,268	(7,612)	
<b>NET ASSET ENDING BALANCE</b>	1,100,600		
<b>TITHE</b>	<b>2017</b>	<b>2016</b>	<b>2015</b>
	5,162,567	5,235,539	5,305,791

# PMC 2018 OPERATING BUDGET

All members are encouraged to attend the Church Business Meeting on Monday, February 26, in the Commons at 7:00 PM.

## 2018 Budget Summary

	Budget 2018	Allocation 2018
<b>NET ASSET BEGINNING BALANCE</b>	\$1,100,600	
<b>INCOME</b>		
<i>Church Family Finance Goals</i>		
Church Operating	\$597,000	35.1%
Christian Education	202,756	12.0
Master Plan for Evangelism (MPE)	106,000	6.3
Building Fund	56,000	3.3
Student Aid	50,000	3.0
<b>Total Family Finance Goals</b>	<b>\$1,011,756</b>	<b>59.7%</b>
Other Evangelism/Harbor of Hope	106,200	6.3
Sabbath School	43,566	2.6
Youth/Outreach Ministries	152,275	9.0
Television/Media Ministry	267,000	15.8
Other Income	114,057	6.7
<b>TOTAL INCOME</b>	<b>\$1,694,854</b>	<b>40.3%</b>
<b>EXPENSES</b>		
Evangelism Programs	\$199,500	12.0
Sabbath School	67,380	4.0
Youth/Outreach Min/GROW Groups	196,890	11.0
Christian Educ./Student Aid	312,556	18.0
Church Operations	396,892	23.0
Building/Maintenance	209,924	12.0
Television/Media Ministry	295,886	17.0
Other	50,925	3.0
<b>TOTAL EXPENSES</b>	<b>\$1,729,953</b>	<b>100%</b>
Net Increase (Decrease)	(35,099)	
<b>NET ASSET ENDING BALANCE</b>	\$1,065,501	

JOIN A  
GROW  
GROUP  
THIS  
SPRING

[pmchurch.org/grow](http://pmchurch.org/grow)

*grow*  
groups