

**PIONEER MEMORIAL  
CHURCH**

**DON'T CRY FOR ME**



**NOVEMBER 16, 2013**

**9:00 AM // PAGE 8 — 11:45 AM // PAGE 11**

# WELCOME!

---

*A middle of November Sabbath already? While the autumn winds have nearly swept our calendars clean, we gather today in the presence of One Who is the Master of all time, as well as our time. Not a day is lost in Jesus' heart. Not a moment are we abandoned by His love. With joy, then, let's lift high our hearts in praise and celebration. And in the quiet when He speaks, take cheer from the Word that promises His partnership in the new week dawning. Visitors, please join us for a home-cooked vegetarian meal following second service in the Commons.*

## FIND IT HERE

### **PAGE FOUR**

Church Reports

### **PAGE EIGHT**

Pioneer One

### **PAGE TEN**

Sabbath School

### **PAGE ELEVEN**

Pioneer Two

### **PAGE TWELVE**

Pioneer People

Announcements

### **PAGE FIFTEEN**

N2N Food Drive

### **PAGE SIXTEEN**

Sabbath School Directory

### **PAGE EIGHTEEN**

Contacts

## THE FOURTH WATCH

---

[WWW.PMCHURCH.TV](http://WWW.PMCHURCH.TV)

### THE POWER OF PORTENT

The scenes have been all too familiar—and tragically so. The photographs could have come out of the monster earthquake tsunami that leveled swaths of the east coast of Japan in 2011. Or the pictures could have been taken in the aftermath of Hurricane Sandy that obliterated entire communities on our own eastern seaboard in 2012. But now for the third year in a row another eastern coastline has been reduced to broken match sticks in the furious wake of Typhoon Haiyan. And the death toll is agonizingly too high once again.

Just another random act of Mother Nature out of control? Perhaps. One more nail in the coffin of global warming? I'll let the scientists argue their points. But I can't shake the nagging suspicion that, contributory factors aside, we are witnesses to a ratcheting up of (un)natural calamities whose message to the human race

---

*Continued on 7*

# "I WILL DO A NEW THING"

---

## SUGAR DADDY?

**H**ave you ever had a friend who always asked for help, favors, money, or transportation, and rarely if ever thanked you or gave back to you in a similar manner? Did you feel like that person was using and abusing the relationship? How long did that friendship last?

When I was an undergraduate music major, I took a course called Form and Analysis. For the final assignment, the professor required us to use what we had learned and analyze some musical works on our own. One of my classmates asked me to help him analyze his piece. I helped him get started, but then he came back and asked for more help. I gave some more suggestions and thought it was time for him to start applying what he had learned. But it seemed that helping him just encouraged him to rely more and more upon me.

How about our relationship with God through our prayer life? When we talk with God, are we sometimes focused just on our needs and desires, treating God like a big "sugar daddy" in the sky?

Every once in a while why not just praise and thank God? The last three Psalms do just that—praise and extol God for His goodness, mercy, and providing food even to the creatures on the earth. I'm sure that God is not like us and that His gifts and mercies are extended to us without expecting anything other than our love in return. But for any relationship to grow, heart-felt expressions of appreciation

and thanks need to be given. And just sitting quietly and not saying anything—keeping silent before Him—is another way to show thanks and commitment to a developing relationship. Furthermore, what about God's needs and desires? What are we doing to help Him achieve His goal to save the lost? *—Dennis Hollingshead*

***"How can I give  
you up, Israel?  
How can I  
abandon you?  
Could I ever  
destroy you  
as I did Admah,  
or treat you as  
I did Zeboiim?  
My heart will not  
let me do it!  
My love for you is  
too strong."***

HOSEA 11:8 GNT

# OPERATING FUND

## GROW GROUPS / BECOMING A WOMAN OF GOD

On Wednesday nights, as you walk by the doors of the back lobby on the second floor of Lamson Hall, you will hear animated conversations. The Becoming a Woman of God GROW Group is the source of this excited chatter! This GROW Group of a dozen women is studying female characters of the Bible. Lindsay White, a sophomore in Pre-Physical Therapy, says studying this subject has shown her "how much all women need to learn about how to become women of God!"

Led by undergraduate students Hannah Mbungu and Vimbo Zvandasara-Zhou, many of the ladies in the group didn't know each other before, but have now formed lasting friendships. Emily Lambeth, a senior Nutrition and Dietetics major, says, "I just like it because . . . I learn so much from other people's opinions and their ideas. . . . It helps to stimulate my mind." This GROW Group also provides an opportunity of fellowship for people of different ages. For example, it's the place where Becky von Dorpowski, a mother of two, is connecting with college-age students.



PMC GROW Groups meet on different days at various places around campus and throughout our community. This fall there have been many topics and activities to choose from. Some have focused on a deeper understanding of Bible topics, while others were as simple as a weekly game of ultimate Frisbee. November is the time for new and experienced GROW Group leaders to register for the groups that will start up in February. Prayerfully consider leading or co-leading a GROW Group for the spring semester. *–Hannah Mbungu & Vimbo Zvandasara-Zhou*

### ASK

God if you should be involved in  
GROW Groups

### MORE INFO

Carolyn Strzyzkowski  
269.519.2801  
growgroups@pmchurch.org

### OPERATING FUND

#### GIVE TO LINE 2

Goal to-date	\$514,890
Received to-date	\$493,893
(Received to-date 2012)	\$467,296

As of November 9, 2013

# MASTER PLAN OF EVANGELISM

## GUEST MINISTRIES / BLESSINGS FROM GOD

Over 25 Host/Hostesses are in place each Sabbath morning to greet and meet our members and guests. All of the guests who come our way are a blessing from God! Many greeters have served Sabbath after Sabbath, year after year; they also are a blessing from God.

When you enter our sanctuary doors, you receive a cornucopia of blessings: warm smiles, meaningful greetings, and frequently a shared word of encouragement. Members and visitors alike are encouraged to be continually blessed as they are surrounded with the joy of Christian fellowship. We should always remember that little acts of kindness are in reality the golden nuggets that fortify the infrastructure of that city called Heaven. Our greeters take their job seriously and are pleased to be the construction workers who are laying the foundation for meaningful worship as we as a family listen and sing, pray and praise, while sitting with our Master.

"The golden rule is the principle of true courtesy, and its truest illustration

is seen in the life and character of Jesus. Oh, what rays of softness and beauty shone forth in the daily life of our Saviour! What sweetness flowed from His very presence. The same spirit will be revealed in His children. Those with whom Christ dwells will be surrounded with a divine atmosphere" (AH 424.1).

Thank you greeters for a job well done! –Vida Giddings



### PRAY

That all who enter PMC's doors  
will see Jesus

### MORE INFO

Vida Giddings / 473.2175  
deaconesses@pmchurch.org

### MASTER PLAN OF EVANGELISM

#### GIVE TO LINE 5

Goal to-date	\$109,890
Received to-date	\$89,055
(Received to-date 2012)	\$93,727

As of November 9, 2013

# CHRISTIAN EDUCATION

---

## RMES / LARGE ANIMAL CARE

Ruth Murdoch Elementary School students in Mrs. Keough's Large Animal Care mini-course have been learning about rumination, lactation, large animal anatomy, and more. While studying cows, they have visited the AU Dairy to learn about the milking process, inspect the ingredients of cattle feed, and to observe the variations among different cattle breeds.



During a follow-up visit to the dairy, our students were responsible for choosing a specific cow and carefully observing this particular cow for 20 minutes. Each student recorded

everything their cow did. How many times did she moo? How many steps did she take? How long did she chew her cud before she swallowed it? Was she standing, sleeping, or walking? This is a very different experience from the Sabbath afternoon stroll through the dairy to look at the cute little calves. Students are getting to know some of what makes dairy cattle different from other types of large animals.

Large Animal Care is one of our mini-courses taught at the Jr. High level. All mini-courses are taught during the school day and cover a wide variety of topics. Students are able to customize their schedule to take courses according to their interests. This is an exciting feature that is unique to our school.

In Genesis 1, God created man and told him to care for every living thing on the earth, including the "beasts of the field." RMES students are getting a first-hand, short-term lesson about the care of other living creatures. This may be an inspiration to a future farmer, dairy manager, missionary, veterinarian, teacher, or hobby farmer.

*-Wendy Keough*

### PRAISE

God for the variety of classes we are able to offer at our school

### MORE INFO

David Waller / 471.3225  
waller@andrews.edu

### CHRISTIAN EDUCATION

#### GIVE TO LINE 3

Goal to-date	\$186,975
Received to-date	\$171,948
(Received to-date 2012)	\$169,133

As of November 9, 2013

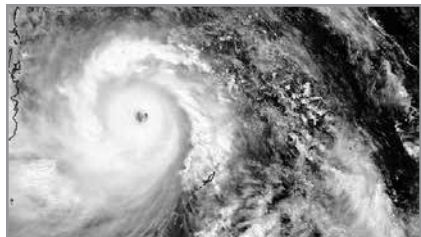
is more than simply a scientific one. Millennia ago an ancient prophet observed: **“The LORD is slow to anger but great in power; the LORD will not leave the guilty unpunished. His way is in the whirlwind and the storm, and clouds are the dust of his feet” (Nahum 1:6).** Nobody, least of all this prophet, is suggesting that all natural calamities are divinely targeted earth events to punish the guilty. By the tens of thousands, it is the innocent who suffer. Nevertheless, we mustn’t miss the prophet’s point—haphazard and seemingly random meteorological events may be divinely permitted portents to warn the human race of impending judgment.

Imagine for a moment an asteroid similar in megatonage to the one that exploded near Chelyabinsk this past February. Only this time what if such an asteroid, undetected and unexpected, would strike a populated center somewhere on this planet? The reaction of this civilization would border on the edge of panic and “revival.” “An act of divine judgment” would be the message trumpeted from a thousand pulpits, mosques, synagogues and temples. The point? Catastrophic (un)natural events instantly, universally suggest divine judgment.

That was the prophet’s point. It was Jesus’ point, too: **“There will be signs in the sun, moon and stars. On the earth, nations will be in anguish and perplexity at the roaring and tossing of the sea. People will faint from terror, apprehensive of what is coming on the world, for the**

**heavenly bodies will be shaken” (Luke 21:25-26).** Roaring and tossing of the sea? Heavenly bodies shaken? Portents of random obliteration or signs of impending divine judgment—either way Someone will have the rapt attention of the entire human race.

My point is twofold. First, we must not become calloused to these crescendoing natural disasters. Text the American Red Cross for a donation on your phone bill for the Philippine crisis. Go online to ADRA.org and contribute to their Leyte disaster relief. Don’t allow your emotions to be aroused without acting in response. Our GROW Group made a contribution to AFIA, the Filipino American club on campus. Second, wake your heart up! We no longer live in natural cycles on this planet. “More and more, as the days go by, it is becoming apparent that God’s judgments are in the world. In fire and flood and earthquake He is warning the inhabitants of this earth of His near approach” (9T 97). Go deeper in your walk with Jesus—linger longer in His presence each morning. Ask for a new boldness to share the urgently good news about Him and His soon return. Step outside your comfort zone—share your faith with a stranger or a friend. After all, if Heaven is ready to go, shouldn’t we be, too?



## ***"...and worship him..."***

### ***...in seeking***

Opening Voluntary	<i>A Gaelic Blessing / John Rutter / Momohara</i>
Introit	<i>Arise, My Soul, Arise / Finnish Traditional</i>
Call to Worship	
Doxology	<i>Praise God, From Whom All Blessings Flow / 2</i>
Invocation	Dwight K. Nelson

### ***...in praising & praying***

Hymn of Praise	<i>Praise to the Lord / 1</i>
Congregational Prayer	Rodlie Ortiz
Call to Prayer	<i>We Would See Jesus / 494</i>
Worship in Music	<i>Crown Him With Many Crowns / Alonso Monarrez</i>
GROW Groups	Andrea Stewart

### ***...in learning***

Children's Story	
Offertory	<i>Put On Gladness, My Soul / Johannes Brahms</i>
The Word	Hebrews 5:7,8; 12:2,3 NIV / Judy Snyder & Ursula Konegen
Hymn of Preparation	<i>All That Thrills My Soul / stanzas 1 &amp; 2 of 189</i>
Sermon	"Don't Cry for Me" / Dwight K. Nelson

### ***...in committing***

Connect Card, Tithes, & Offerings	PMC Operating Expense
Hymn of Commitment	<i>Draw Me Nearer / 306</i>

### ***...in going***

Benediction	
Closing Voluntary	<i>Rise Up, O Church of God / Seth Bingham</i>



## CALL TO WORSHIP

---

Jesus said, "But when the Counselor comes, he will bear witness to me."

**God has poured out his love into our hearts through the Holy Spirit which is his gift to us.**

The Spirit's presence is shown in some way in each person for the good of all.

**If we live by the Spirit, let us walk by the Spirit that we may be the children of God.**

## THE WORD

HEBREWS 5:7,8; 12:2, 3 *NIV*

---

During the days of Jesus' life on earth, he offered up prayers and petitions with fervent cries and tears to the one who could save him from death, and he was heard because of his reverent submission.

**Son though he was, he learned obedience from what he suffered.**

Let us fix our eyes on Jesus, the pioneer and perfecter of faith. For the joy set before him he endured the cross, scorning its shame, and sat down at the right hand of the throne of God.

**Consider him who endured such opposition from sinners, so that you will not grow weary and lose heart.**

## MUSIC ALIVE

---

### RISE UP

**"R**ise Up, O Church of God" initially came to the SDA Hymnal Committee as "Rise Up, O Men of God," in keeping with common Protestant usage. It was voted to be included as such in the hymnal, with its reference to "men" but with no explicit, clear reference to women and youth. However, upon reconsideration of its (apparently) all-male language, the committee eliminated it. However, during a

meeting break, committee member Otilie Stafford started modifying it to include "women" explicitly. Her addition of a stanza for young people completed the basic revision, and committee members unanimously voted the hymn, now revised, back into the hymnal plan. Stafford commented, "We were all happy that the problem was resolved, and we now had the hymn we all wanted but had become resigned to losing."

# SABBATH STUDY

SANCTUARY 10:30 AM

---

<b>Song Service</b>	Christina Carroll
<b>Opening Hymn</b>	<i>Far and Near the Fields Are Teeming</i> / 358
<b>Welcome, Scripture &amp; Prayer</b>	Thomas Baker
<b>Special Feature</b>	Andrews Academy
<b>Offertory</b>	<i>Andante</i> / Jean-Marie LeClair
<b>Bible Study</b>	"Christ, Our Sacrifice" / Classes
<b>Theme Song</b>	<i>Make Me a Blessing</i>

*Make me a blessing; make me a blessing.  
Out of my life may Jesus shine.  
Make me a blessing; O Savior, I pray.  
Make me a blessing; to someone today.*

"Make Me a Blessing," Ira Bishop Wilson  
©1924, Renewed 1952 Word Music, LLC; Used by Permission. CCLI License #392652

<b>Benediction</b>	Christina Carroll
--------------------	-------------------

ORGANIST: Kenneth Logan  
OFFERTORY: Josias Sanchez, violin; Hayden Leung, violin

**[see page 16/17 for Sabbath School directory & map]**

---

## HEALTH AND WELLNESS EVENTS

---

### **Running Club and Walking Club**

Sun. • 8 AM • PMC parking lot  
There are several pace groups, so you're  
sure to find the one that fits you.  
Beginners welcome!

### **Group Exercise Class**

Mon. & Thurs. • 6-7 PM • PMC Commons  
Work on strength, balance, and flexibility  
with free weights and light balls.  
Half the time is working out while standing  
and the other half while lying on a mat.

**Exercise classes are taught by a certified Group Fitness Instructor.**

**“That all of them may be One...”**—Jesus (John 17:21)



## **As We Begin**

*A Gaelic Blessing /  
John Rutter / Momohara*

## **We Welcome**

## **We Glorify**

*Crown Him With Many Crowns /  
Alonso Monarrez*

## **We Pray**

## **We Share**

*Children’s Story  
Dick Duerksen—Maranatha*

## **We Grow**

*Monte Bermeo*

## **We Praise**

## **We Proclaim**

*“Don’t Cry for Me” /  
Dwight K. Nelson*

## **We Connect**

*(Connect Card, Tithes, & Offerings)*

## **We Commit**

*Draw Me Nearer / 306*

## **As We Depart**

*Rise Up, O Church of God /  
Seth Bingham*



MUSIC DIRECTOR: Ilana Cady; CREATIVE DIRECTOR: Matthew Master

PRAISE LEADER: Justin McAuliffe; DJEMBE: Gabriel Robinson

PIANO: Leslie Samuel; GUITAR: Matthew Master

VOCALS: Wallace Borges, Johnathan Coker, Alanna James, Kali Jardine, Chikondi Kamvazaana

PLATFORM MANAGER: Debbie Weithers; ORGANIST: Kenneth Logan

WE GLORIFY: Brass Ensemble; Omar Carballo, director

# PIONEER PEOPLE

---

SUNSET TODAY: 5:25

SUNSET NEXT FRIDAY: 5:20

*To submit a request to have an announcement printed in Pioneer Family Life, please email [bulletin@pmchurch.tv](mailto:bulletin@pmchurch.tv). Requests must be received Monday by 5 PM for consideration.*

## PIONEER FAMILY LIFE

---

### **SANCTUARY FLOWERS**

The flowers today are given by Raymond Mayor in loving memory of his wife Wilma who died 10 years ago, November 15, 2003.

### **FAMILY VESPERS**

Join us for vespers this evening in the Sanctuary as we join the music group, Journey, for their concert at 5:30 PM.

### **A NIGHT OF MUSIC**

Join Laura Ortiz, soprano, and Carlos Flores, pianist, as they present *A Night of Music, Art & Folklore in Mexico* featuring art songs from Mexico, including works by Manuel Ponce, Silvestre Revueltas and Rodolfo Halftner, as well as some of the best-known songs from the traditional Mariachi repertoire. Special guests include an Andrews University mariachi band. The concert will take place tonight at 8 PM in the Howard Performing Arts Center. Call the HPAC Box Office at 471.3560 for tickets.

### **SCRAPBOOKING TOGETHER**

Scrapbookers and cardmakers, you are invited to bring your project and enjoy the creative energy of others at our crop tomorrow from 1 to 5 PM in the PMC Commons. We provide refreshments and prizes. No charge. Invite your friends.

### **PATHFINDERS FUNDRAISER**

Homemade crumb-top apple pies are available during the month of November from the PMC Evergreen Pathfinder Club. The Pathfinders are picking the apples & making pies—which can be frozen or baked right away. Pies will be made each Sunday. There will be gluten-free options too! Email your orders to [evergreenfundraisers@gmail.com](mailto:evergreenfundraisers@gmail.com) or call 269.340.0366. Orders placed by 8 AM Sunday morning will be available for pick-up at PMC that afternoon from 1-4 PM. All funds raised will help send the Pathfinders to next summer's camporee in Oshkosh, WI.

### **GRADUATE PIANO RECITAL**

Anne Loura will give a graduate piano recital on Monday, November 18, at 8 PM in the Howard Performing Arts Center. She will perform works by Bach, Brahms, and Beethoven. Admission is free and all are welcome.

### **LIVE JAMES 1:27**

Come to a free, no-strings-attached meeting to learn how you can serve foster children and orphans (in or outside of your home). Foster teens, a foster family, and representatives from Dept. of Human Services will present and answer questions. November 19 at 6:45 PM in Buller Hall, Room 104.

### **SINGING PSALMS**

The Department of Music presents "Singing Psalms," featuring the voice students of AU. Join with them on Friday, November 22, at 7 PM in the Howard Performing Arts Center as they share many of the great Psalm and Scripture song settings from the early 1900's. Among the gems being sung are "The Lord Is My Light"—Al-litsen; "The Publican"—Van de Water; and so many more. Don't miss this rare opportunity to hear these songs again. Admission is FREE.

### **BIRTHDAY CELEBRATION**

Emily Radostis, a longtime member of PMC, will be celebrating her 90th birthday on November 29. In 1952, Emily and her husband, Jerry, moved to Berrien Springs so he could attend EMC. They attended the original church services in the College Chapel and financially supported the building of PMC, in addition to all its expansions. Emily taught in the Kindergarten Sabbath School Department for over 10 years, after which she and Jerry attended Dr. Edwin Buck's Sabbath School class until Jerry's passing in 2002. Although Emily had a stroke several years ago, she has recovered remarkably well and still lives on her own surrounded by her two children and four grandchildren in Colorado. Please feel free to send cards to Emily Radostis, 520 S. Dover Avenue, Lafayette, CO 80026, or email your greetings to [rrsundin@yahoo.com](mailto:rrsundin@yahoo.com). Emily rejoices in the spirit of the Lord, the love of her family, and the warmth of your cards and letters.

### **"WORDS BY FANNY CROSBY"**

The Andrews Academy Literary Interpretations class (Drama class) will be performing the play entitled "Words by Fanny Crosby," a biographical sketch which highlights how some of Fanny Crosby's well-known hymns came to be written. Blinded at the age of 6 weeks old, this inspiring story of walking by faith instead of sight challenges viewers to think about how they respond to conflicts and trials. Fanny chose to believe her blindness was a blessing and could be used to glorify God. Performances will be Saturday, November 23, at 7 PM and Sunday, November 24, at 6 PM in the RTO Chapel at Andrews Academy. Tickets may be purchased at the door beginning a half hour prior to performance.

### **THANKSGIVING FOOD DRIVE**

The PMC Evergreen Pathfinders are gearing up for our annual Thanksgiving Food Drive. As we plan for this event, we want to let you know so you can plan to add a little to your shopping if you choose to participate. Pathfinders will be distributing bags to the community today and then picking up filled bags the afternoon of November 17. Food collected will be used in preparing Thanksgiving boxes on November 23. You will also have an opportunity to bring food donations to church as part of the Thanksgiving service on Sabbath, November 23. We will also need help distributing the Thanksgiving boxes on the afternoon of November 23. Watch for future announcements with details.

### DRIVER NEEDED

The PMC Youth Missions team is going to Honduras during December 12-23. The team is almost complete. A bus driver is needed, preferably one who speaks Spanish. We also need a Spanish-speaking young man to serve as a boys' counselor during our Friendship Team camp for about 150 children. Contact [glenn@andrews.edu](mailto:glenn@andrews.edu) for costs and more details. Contributions can be labeled PMC Youth Missions Honduras.

### WE MOURN

We mourn with the following families on the loss of loved ones: **Harry Lloyd** on the death of his sister, Mary Bolender, on Saturday, November 9, in Idaho. A memorial service was held there. **Lyn MacCarty** on the death of her sister, Margaret Fretwell-Alexander, on October 20 in Ogden, Utah. Funeral services were held on October 25. **Kurt Allen** on the death of his father, Roy Allen, on Thursday, November 7 in Tennessee. A graveside service was held on Tuesday, November 12, in Berrien Springs. With all of these families, we look forward to the resurrection morning. "Even so, come Lord Jesus."

### N2N HOLIDAY SCHEDULE

Neighbor To Neighbor will be closed on Thursday, November 28, for the Thanksgiving holiday. Please hold your donations until we re-open on Monday, December 2.

### 2013 BRIDAL EXPO

Join the Howard Performing Arts Center for the 2013 bridal expo Sunday, November 24, from 2-4 PM. Enjoy vegetarian catering, non-alcoholic beverages, clean and family friendly music and entertainment, all in one place for your wedding planning convenience. Tickets are available at the box office, online at [howard.andrews.edu](http://howard.andrews.edu), or by calling 888.467.6442. If a bride brings a guest, her ticket is free! Vendors include: OK Catering, All Star Productions, Apple Valley Bakery, Bradley Austin Photography, Hidden Vineyard Wedding Barn, JuliZDesignz, Morris Chapel, and Caitlan's.

### GROW GROUP LEADERS

November is officially the time for new and experienced GROW Group Leaders to register their groups for Spring! The Spring Semester starts January 31. Do you know the topic you want to lead, but are unsure of how to proceed? Go to [pmchurch.org/newgrow-group](http://pmchurch.org/newgrow-group) to register your group. If you have questions, please call Carolyn Strzykowski at 269.519.2801 or email [carolynstr@comcast.net](mailto:carolynstr@comcast.net).

### SENIOR CITIZEN HOLIDAY LUNCHEON

Berrien Springs Public Schools invites the school district's 60-year-old and over citizens to their holiday luncheon on Wednesday, December 4, from 11:30 AM to 2 PM in the high school gym. Vegetarian entrees available. RSVP by Friday, November 22, by calling 269.471.2891.

# REPLENISH N2N PANTRY

---

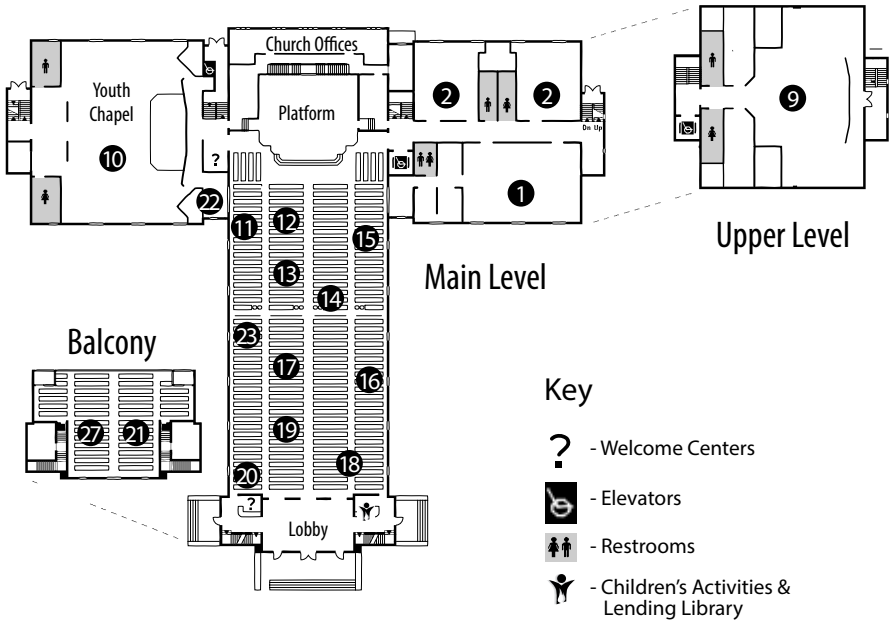
Once again, Apple Valley is helping us sponsor a food drive for Neighbor to Neighbor by making cases of food available at just pennies above their cost. This food drive will run from November 2 through December 20, 2013. Here is how it works:

1. Take this sheet and check off the quantity of each case you wish to purchase
2. Take the sheet to a cashier at Apple Valley
3. Pay for the items
4. Apple Valley will deliver the cases to Neighbor to Neighbor

\*Case prices are subject to change & only apply to Apple Valley deliveries to Neighbor to Neighbor

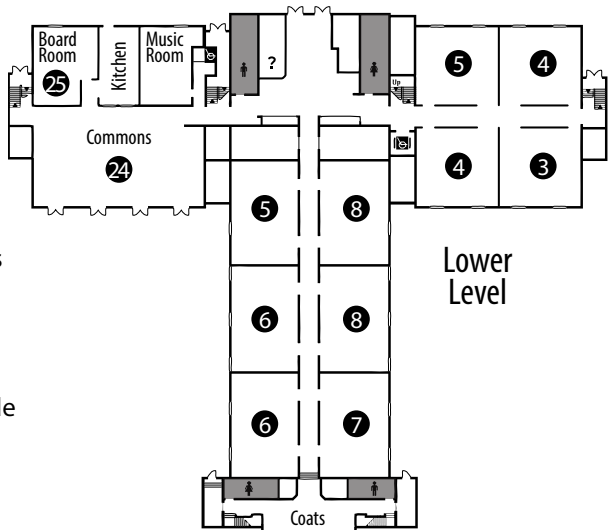
	PACK/SIZE	ITEM	COST*	NUMBER
586-610	12/32 OZ	GRAPE JELLY (VALUE TIME BRANDS)	\$16.86	_____
586-651	12/32 OZ	STRAWBERRY	\$25.00	_____
593-301	12/18 OZ	PEANUT BUTTER-CREAMY	\$17.76	_____
593-335	12/18 OZ	PEANUT BUTTER-CRUNCHY	\$17.76	_____
591-347	24/20 OZ	PINEAPPLE SLICES	\$24.34	_____
920-652	16/23 OZ	KETCHUP	\$13.29	_____
561-134	12/30 OZ	SALAD DRESSING	\$18.30	_____
590-935	12/29 OZ	SLICED PEACHES L/S	\$17.34	_____
620-120	12/29 OZ	FRUIT COCKTAIL	\$18.56	_____
110-304	12/25.6	SPARTAN 8 QT DRY MILK	\$77.34	_____
352-807	8/64 OZ	APPLE JUICE (VALUE TIME BRANDS)	\$9.08	_____
709-105	24/16 OZ	SPARTAN BLACK BEANS (DRY)	\$26.48	_____
069-864	24/16 OZ	SPARTAN LENTILS (DRY)	\$21.93	_____
069-872	24/16 OZ	SPARTAN PINTO BEANS (DRY)	\$27.56	_____
433-961	8/64 OZ	GRAPE COCKTAIL JUICE	\$12.96	_____
586-701	24/15.5	CORN W/K	\$13.91	_____
586-743	24/15 OZ	SWEET PEAS	\$15.24	_____
620-203	24/12 OZ	EVAPORATED MILK	\$18.05	_____
590-562	24/15 OZ	MIX VEGETABLES	\$14.17	_____
426-510	12/12 OZ	EGG NOODLES	\$11.20	_____
105-700	24/10.5	SPARTAN VEG SOUP	\$16.57	_____
625-566	12/32 OZ	ELBOW MACARONI	\$20.44	_____
625-061	12/32 OZ	SPAGHETTI REG	\$20.44	_____
619-213	24/6.25	MAC/CHEESE DINNER	\$10.42	_____
624-171	48/8 OZ	TOMATO SAUCE	\$12.25	_____
419-408	12/8 CT	HOT COCOA	\$11.89	_____
576-256	24/10.5 OZ	CREAM OF MUSHROOM SOUP	\$12.29	_____
550-707	12/32 OZ	PANCAKE MIX	\$17.64	_____
008-490	12/24 OZ	PANCAKE SYRUP	\$16.55	_____
256-511	12/32 OZ	LONG GRAIN RICE	\$13.47	_____
172-205	24/16 OZ	VEGETABLE-OIL SPARTAN	\$32.10	_____
034-686	12/12 OZ	SQ-HONEY	\$22.31	_____
209-478	12/7 OZ	FROSTED FLAKE CEREAL	\$10.68	_____
209-353	12/7 OZ	APPLE WHIRLS CEREAL	\$10.68	_____
621-292	8/5 LB	ENRICHED FLOUR	\$13.11	_____
620-179	10/4 LB	GRANULATED SUGAR	\$19.48	_____
507-384	12/18 OZ	OATMEAL QUICK	\$29.70	_____

# SABBATH SCHOOL DIRECTORY



[children]

- 1 Birth - 18 months
- 2 18-36 months
- 3 3 yr olds
- 4 4 - 5 yr olds
- 5 6 yr old - 1st grade
- 6 2nd/3rd grade
- 7 4th grade
- 8 5th/6th grade
- 9 Earliteen: 7th/8th grade
- 10 Youth: 9th-12th grade





# PIONEER CLASSES

[adult sanctuary]

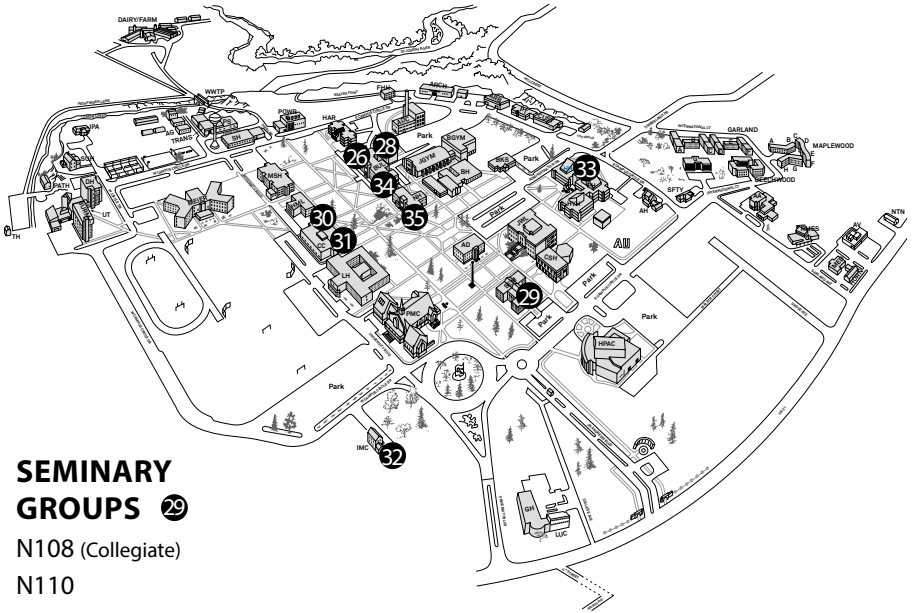
- 11 Group 1
- 12 Group 2 (Portuguese/Brazilian)
- 13 Group 3
- 14 Group 4 (Yugoslavian)
- 15 Group 5
- 16 Group 6
- 17 Group 7
- 18 Group 8
- 19 Group 9 (Spanish)
- 20 Group 10
- 21 Group 11 (Balcony)
- 22 Conference Room
- 23 Indonesian Class

[miscellaneous adult]

- 24 Something In Common
- 25 Seventh-day Adventist Beliefs

# COLLEGIATE

- 26 H&M (Hispanic - Religion Amphitheater)
- 27 People on the Move (PMC)
- 28 The Well (Buller—238)



# SEMINARY GROUPS 29

- N108 (Collegiate)
- N110
- N120 (New Life Church Choir)
- N150
- N211 (Small group)
- N235
- N310 (Russian)
- N335 (Spanish)
- S215 (French)
- S340 (Upper Room)

# ADULT @ AU

- 30 Main Lounge
- 31 Faculty Lounge
- 32 Back to Basics
- 33 Living Word Fellowship
- 34 Current Events (Buller—135)
- 35 Bible Journey (Nethery—143)

# CONTACTS

---

## PASTORS

[chaplain / pioneer] José Bourget  
bourget@pmchurch.org  
471.6254

[pastoral care] Don Dronen  
dronen@pmchurch.org  
471.3133

[youth ministries] Micheal Goetz  
goetz@pmchurch.org  
471.6176

[harbor of hope] Taurus Montgomery  
montgomery@pmchurch.org  
662.998.5681

[senior pastor] Dwight K. Nelson  
nelson@pmchurch.org  
471.3134

[chaplain / new life] Timothy P. Nixon  
nixon@pmchurch.org  
471.3212

[chaplain / one place] Japhet De Oliveira  
japhet@andrews.edu  
471.6282

[this generation evangelism] Rodlie Ortiz  
ortiz@pmchurch.org  
471.6154

[stewardship] Sharon Terrell  
terrell@pmchurch.org  
471.6151

## MINISTERS

[music] Kenneth Logan  
logan@pmchurch.org  
471.3231

[media ministries] Nick Wolfer  
wolfer@pmchurch.org  
471.3246

## STAFF

[admin. assistant] Genaida Benson  
benson@pmchurch.org  
471.6565

[clerk] Jackie Bikichky  
bikichky@pmchurch.org  
471.3972

[executive assistant] Sherrie Davis  
davis@pmchurch.org  
471.3134

[asst. media director] Jonathan LaPointe  
lapointe@pmchurch.org  
471.3678

[admin. assistant] Lailane Legoh  
legoh@pmchurch.org  
471.3543

[graphic designer] Rachelle Offenback  
bulletin@pmchurch.tv  
471.3647

[assistant treasurer] JoAnn Siagian  
siagian@pmchurch.org  
471.7656

[maintenance] Larry White  
white@pmchurch.org  
471.3649

## MINISTRIES

[adventurers] Kathy Capps  
adventurers@pmchurch.org  
815.5090

[deacons] Milan Vajdic  
deacons@pmchurch.org  
471.0328

[deaconesses] Vida Giddings  
deaconesses@pmchurch.org  
473.2175

[elders] Russell & Cynthia Burrill  
elders@pmchurch.org  
473.3738

[health] Tatiyana Stankovic  
health@pmchurch.org

[pathfinders] Jonathan Burt  
evergreenpathfinders@gmail.com  
269.815.0178

[public address] Joel Kitchen  
audio@pmchurch.org

[GROW groups] Carolyn Strzykowski  
growgroups@pmchurch.org  
269.519.2801

## SABBATH SCHOOL

[birth - grade 1] Claudia Davisson  
bg1@pmchurch.org  
269.208.7081

[grade 2 - earliteen] Robert Barnhurst  
g2teen@pmchurch.org  
473.1613

[adult] Elizabeth Wilson  
adultss@pmchurch.org  
269.782.8923

## OUR SCHOOLS

[ruth murdoch / K-8] David Waller  
waller@andrews.edu  
471.3225

[andrews academy] Robert Overstreet  
overstrr@andrews.edu  
471.3148

[andrews university]  
enroll@andrews.edu  
471.7771 / 800.253.2874

# PMCHURCH MEDIA

## TELEVISION

WHME TV 46  
*Sunday noon & midnight*

SAFE TV, HOPE CHANNEL & 3ABN  
*See websites for local listings*  
[www.safetv.org](http://www.safetv.org)  
[www.hopetv.org](http://www.hopetv.org)  
[www.3abntv.org](http://www.3abntv.org)

## LIVE VIDEO STREAMING

11:45 AM — [www.pmchurch.tv](http://www.pmchurch.tv)

## ONLINE

[www.pmchurch.org](http://www.pmchurch.org)  
[www.pmchurch.tv](http://www.pmchurch.tv)

## RADIO

WAUS - 90.7 FM  
*Sabbath 11:30 a.m.*



8655 UNIVERSITY BOULEVARD  
BERRIEN SPRINGS, MI 49103  
PHONE 269.471.3133 – FAX 269.471.6152

## UNIVERSITY VESPERS

---

FRIDAY @ 7:30 PM, PMC SANCTUARY

We invite you to be a part of this experience  
to rest, revive, and reconnect.

11.15.13	Maranatha Volunteers International
11.22.13	Bill Knott
12.06.13	Welcome Christmas (HPAC)

## COMING SOON

---

<b>11/23</b>	Micheal Goetz Thanksgiving Feast of Hymns
--------------	--

<b>11/30</b>	Dwight K. Nelson "An American Thanksgiving"
--------------	--