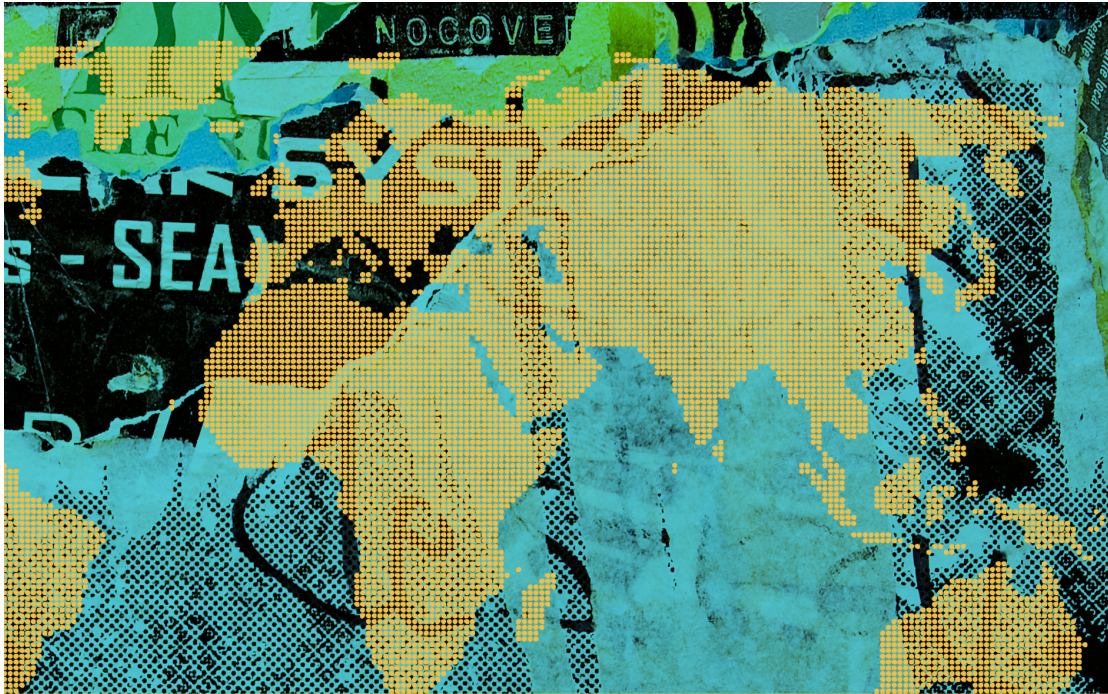


# PIONEER MEMORIAL CHURCH



# THE RADICALS

THIS *GENERATION*, THIS *WORLD*, THIS *TIME*

PART FIVE // FEBRUARY 26, 2011

8:15 AM // PAGE 8

11:20 AM // PAGE 11

# WELCOME!

---

*And a cheery winter welcome to our visitors and our “regulars”. No matter the wintry blues of the weather around this place, we hope Pioneer can be a warm refuge in the midst of it all. Visitors are invited to enjoy a home cooked vegetarian meal following second service in the Commons. Happy Sabbath and welcome!*

## FIND IT HERE

### **PAGE FOUR**

Church Reports

### **PAGE EIGHT**

8:15 AM // Service  
The Word  
Music Alive

### **PAGE TEN**

Sabbath Study  
11:20 AM // Service

### **PAGE TWELVE**

Pioneer People -  
Announcements

### **PAGE SIXTEEN**

Sabbath School Directory

### **PAGE EIGHTEEN**

Contacts

## PASTOR'S BLOG

---

[WWW.PMCHURCH.TV](http://WWW.PMCHURCH.TV)

### THE BERLIN WALL ALL OVER AGAIN?

Like teetering dominos, the Islamic giants of the Middle East fill our news. Tunisia, Egypt, Yemen, Bahrain, Algeria, Morocco, Libya, Iran—will Saudi Arabia, Jordan, Syria and the smaller nations be exempt from the sweeping unrest that has already spread across the desert sands of these neighbors?

Regarding this time of immense instability and uncertainty in the Middle East, I ponder these two observations. Number one, clearly this political and social upheaval is being fueled by the young of these Islamic societies. Banded together and spurred on by the social networks, Facebook and Twitter, it is dominantly the young who are the driving force behind the revolutionary upheavals. The YouTube clips, the nightly news coverage, the tweeted messages crisscrossing the region in nanoseconds—belong to youthful faces and voices. I wonder what would happen would the young of Christian-

---

*Continued on 7*

# NEXT SABBATH // A GROUP HUDDLE

---



All this month, our Pioneer ministry teams have convened group huddles to answer one question—**“How can our ministry recruit, train and mobilize ‘this generation’ for Christ?”** I.e., what proactive strategy can each ministry (Sabbath School, deacons and deaconesses, elders, greeters, Pathfinders, youth, et al) implement to draw students into God’s mission for the church, for the world?

## “A CELEBRATION OF SYNERGY”

Don’t miss our Sabbath afternoon Pioneer-wide group huddle—when we share the energy and the synergy of these ministry vision reports. It will be an exciting glimpse into God’s future for this campus congregation.

## “A POTLUCK OF SYNERGY”

The synergy begins with a church-wide old-fashioned sandwich potluck in the Commons, immediately following our 11:20 a.m. service. Who hasn’t experience the synergy and deliciousness of an Adventist fellowship dinner!



- **Families** bring 10 sandwiches\*
- **Singles** bring 5 sandwiches\*
- **A-L last names** also bring 12-15 servings of a fruit salad
- **M-Z last names** bring 12-15 servings of any other salad

\* Please label if food is vegan so those on a plant- based diet can sample your tasty contribution.

BE A PART OF THE FUTURE—BY HELPING WRITE IT—RIGHT NOW

# MASTER PLAN OF EVANGELISM

## JAIL MINISTRY \ MISSIONARIES AT HOME

Donna Biddinger, one of the Jail Ministry volunteers, recently gave us a glimpse of her experience at the jail in St. Joseph, Michigan. "When we arrive, the women who want to attend "church" are brought into a room much like a school classroom. We open with a song service, have a time of prayer and praise, and then have a Bible lesson. We see many "repeat customers" in that room, some who have been out of jail for several years only to return for one reason or another. When they come back after such an absence and see our familiar faces, they often say something like, "I remember you from when I was here three years ago." They are immediately at ease with us, and in their own way, care about us. This has been shown to me a number of times since Sheryl Vance's accident. The ladies often ask about Sheryl, 'the lady with the curly gray hair'. A few weeks ago, a repeat offender was back after a long absence and asked for Sheryl. When told about Sheryl's accident, she was visibly upset. She said Sheryl always gave wonderful Bible lessons.



When incidents like this happen, it reminds us of the missionaries in foreign countries and how they have to make friends with the natives before they can effectively present Jesus. To some degree this is true for Jail Ministry as well. Is God calling you to be a missionary to those who are incarcerated - to be their friend and to direct them to their Best Friend? If so, call Broderick Morris, and he will get you started on a road to mission service right here in Berrien County.

### PRAY

That our jail ministry will grow  
and the harvest will be great  
for God's glory

### MORE INFO

Broderick Morris \ 473-5337

### MASTER PLAN OF EVANGELISM GIVE TO LINE 5

Annual Budget	\$131,000
Goal to-date	\$ 17,633
Received to-date	\$ 9,901
<i>(Received to-date 2010)</i>	\$ 9,838

As of February 12, 2011

# CHRISTIAN EDUCATION

## AA \ SPIRITUAL RETREAT AT CAMP AU SABLE

At this winter's AA Bible Camp, Pastor Micheal Goetz challenged students to seek God with all their hearts. He encouraged them to give up anything that distracted them from God, whether it is dating, sports, video games, music or any other thing.

On Friday, despite the very cold temperatures at Camp Au Sable, the students planned for a special outdoor communion service on the lake.

A team of students and sponsors made an ice cross for the event, while others stayed inside preparing the communion bread. Then, in the quietness of the evening, they gathered to celebrate the Lord's supper. The lake location had been specifically chosen to symbolically complement the worship

story of "Forty Wrestlers for Christ". This true story (<http://www.ntwrestle.com/default.asp?ACTION=DOC&ID=169&SUBID=135>) helped to illustrate the ultimate in courage for Christ - presenting your body as a living sacrifice.

This service, and the many other activities of the weekend, helped young people slow down, come apart from the world and listen to God's voice.



### PRAY

For God's outpouring of His Spirit on our students and staff.

### MORE INFO

Cleon White \ 471.3148  
whitec@andrews.edu

### CHRISTIAN EDUCATION GIVE TO LINE 3

Annual Budget	\$220,921
Goal to-date	\$ 29,736
Received to-date	\$ 19,078
<i>(Received to-date 2010)</i>	\$ 18,720

As of February 12, 2011

# OPERATING EXPENSES

---

## SMALL GROUP \ CONNECTING IN PERSON

Can you imagine five people in a room each connected to someone somewhere with their iphone, ipad, or latest digital device? I have been there! Can email, texting, twitting (is that even a word?) or facebooking (another new word!) substitute for face-to-face community? As terrific as all the connections via the cloud are, I am old fashioned enough to say no. They cannot. In reality, my old fashioned assertion may be the new frontier. Imagine, people actually in a room listening and dialoguing? Novel new idea!

To be appreciated as a human being. To tell your story. To be cared for. To listen to another, and share ideas with the human dynamic of actual presence. That is a small group!

Here is a group member's testimony: "In our group, I was able to feel loved. Actually loved in the most positive Christian way, and affirmed as a person with integrity."

Nothing can replace being present with other people, connecting in authentic Christian community.



### PRAY

For the revival of an authentic Christian community in our church and worldwide

### MORE INFO

Joni Bell \ 815.4739  
Jbell105@yahoo.com

### OPERATING EXPENSES

GIVE TO LINE 2

Annual Budget	\$585,000
Goal to-date	\$ 78,750
Received to-date	\$ 56,069
<i>(Received to-date 2010)</i>	\$ 55,344

As of February 12, 2011

ity, the young of Adventism, the young of this university—were they to band together and become an indomitable force for the God of the universe. What will awaken the sleeping giant of the young here in the West—do you wonder, too?

My second observation grows out of the memory of how stunningly fast the “iron curtain” of communism came down in 1989. What the world and even the church had resigned themselves to—an unbreachable wall of separation between the East and the West—literally overnight collapsed. And lands forbidden, as it were, to the everlasting gospel were suddenly opened and accessible. And for one brief and shining moment, the hungry masses “behind the wall”



poured into public lecture halls to hear for the first time the everlasting gospel. Could it be that the Middle East itself might yet open similarly? While the socio-religio-political dynamics are radically different between Eastern Europe in the 1990s and the Middle East in the 2010s, nevertheless the possibility of a similar brief and shining moment of opportunity is just as real, is it not?

Who will be ready to respond? Will the church? *Will you?*

I would like to appeal, particularly to the young who are reading this blog—could it be that God will call you (irrespective of your degree or career)

to become part of his frontline, rapid-response team in the Middle East one day? The more I read, the more I ponder and pray, the more convicted I am that God has raised up this community of faith to be a connecting bridge with our Muslim brothers and sisters. The fanatical elements of both Islam and Christianity would seek to destroy any divine bridging, but a generation of young radical followers of God in our faith community could be the very catalyst God needs to communicate

his endtime appeal to the human race, to his Muslim children the world over. And so I urge you to make this notion of becoming a radical missionary for the Kingdom a matter of earnest personal praying. Who knows but that “for such a time as this” God has

personally raised you up! (Listen carefully to “The Radicals”—Part 6.)

We are all watching history in the making. God help us, however, to do more than watch. Instead let us help write the history God has always dreamed could be: **“After these things I looked, and behold, a great multitude which no one could number, of all nations, tribes, peoples, and tongues, standing before the throne and before the Lamb, clothed with white robes, with palm branches in their hands” (Revelation 7:9).** Let’s make that history for God.

# PIONEER @ WORSHIP

8:15 AM

---

<b>Pioneer Family Life</b>	Skip MacCarty
<b>Voluntary</b>	<i>Moderato / Christian Finck</i>
<b>Introit</b>	<i>When the Church of Jesus Shuts its Outer Door / Ralph Vaughan Williams</i>
<b>Call to Worship</b>	
<b>Doxology</b>	<i>Praise God, From Whom All Blessings Flow / 695</i>
<b>Invocation</b>	Dwight K. Nelson
<b>Hymn of Praise</b>	<i>O, for a Thousand Tongues to Sing / 250</i>
<b>Congregational Prayer</b>	Skip MacCarty
Call to Prayer	<i>Make Me A Blessing</i>
Response	
<b>Worship in Music</b>	<i>Meditation / Jules Massenet</i>
<b>Offering</b>	Pioneer Memorial Church Operating Expense
Dedication Prayer	Charles Neumann
Offertory	<i>Jesus, What a Friend for Sinners / Dale Wood</i>
<b>Children's Story</b>	
<b>The Word</b>	Luke 9:57-62 NKJV / Jacqueline Neumann
<b>Hymn of Preparation</b>	<i>O Master, Let Me Walk with Thee / 574</i>
<b>Sermon</b>	"The Radicals: This Generation, This World, This Time"—Part 5 Dwight K. Nelson
<b>Hymn of Commitment</b>	<i>I Will Follow Thee / 623</i>
<b>Benediction</b>	
<b>Postlude</b>	<i>Allegro moderato / Felix Mendelssohn</i>

PRESIDING PASTOR: Skip MacCarty    ORGANIST: Kenneth Logan  
WORSHIP IN MUSIC: André Moncrieff, violin



## CALL TO WORSHIP

---

Make a joyful noise to God, all the earth;

**Let us sing glory to his name, let us give him glorious praise!**

Our souls wait for the Lord, He is our strength and our help;

**Let your steadfast love, O Lord, be upon us, even as we hope in you.**

Let us worship God.

## THE WORD

LUKE 9:57-62 NKJV

---

Now it happened as they journeyed on the road, that someone said to Him, "Lord, I will follow You wherever You go."

**And Jesus said to him, "Foxes have holes and birds of the air have nests, but the Son of Man has nowhere to lay His head."**

Then He said to another, "Follow Me."

But he said, "Lord, let me first go and bury my father."

**Jesus said to him, "Let the dead bury their own dead, but you go and preach the kingdom of God."**

And another also said, "Lord, I will follow You, but let me first go and bid them farewell who are at my house."

**But Jesus said to him, "No one, having put his hand to the plow, and looking back, is fit for the kingdom of God."**

## MUSIC ALIVE

---

### WHAT A FRIEND

**"T**he musical quality of his voice stirred and yet quieted an audience. His words, clearly enunciated, could be heard without strain by an immense crowd (often 10,000), even when hushed to a quiet whisper." In these words a commentary from 1920 describes the author of the words of the stirring hymn, "Jesus, What a Friend for Sinners" (no. 187). In fact, author J. Wilbur Chapman was born at Richmond, Indi-

ana, but in time became a widely-traveled evangelist. The melody of this hymn, HOLY MANNA, is widely known with several sets of words. An inspiring alternate set of words, "God Who Stretched the Spangled Heavens", appears as no. 536 in the *Seventh-day Adventist Hymnal* and contributes the published title for Dale Wood's organ setting, today's offertory. Today's introit uses the pensive melody of no. 581.

# SABBATH STUDY

SANCTUARY 10:00 AM

---

<b>Song Service</b>	Allison Ireland
<b>Welcome</b>	Delyse Steyn
<b>Special Feature</b>	Missions
<b>Offertory</b>	<i>Andante / C. W. von Gluck</i>
<b>Bible Study</b>	"Self-Esteem" / Classes
<b>Theme Song</b>	<i>Make Me a Blessing</i>
<b>Benediction</b>	Allison Ireland

ORGANIST: Kenneth Logan ; OFFERTORY: Jonathan Baumgartner, cello; Lida Supadi, piano

**[see page 16/17 for Sabbath School directory & map]**

# EASTER PASSION PLAY

---

## VOLUNTEERS \ IT WON'T HAPPEN WITHOUT YOU



*If you don't think your talents can be utilized, THINK AGAIN. It takes hundreds of volunteers for Easter Passion Play to run every year and without your help, it's nearly impossible. Remember, no role is insignificant, no task too small when telling the GREATEST STORY ever told!*

GO TO //

[www.passionplay.andrews.edu](http://www.passionplay.andrews.edu)

*To register and pick your position today!*



Easter Passion Play

Andrews University



## **Voluntary**

*Moderato*

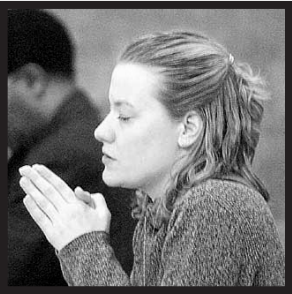
## **Introit**

*When the Church of Jesus Shuts its  
Outer Door*

## **Songs of Praise**

## **Prayer**

Skip MacCarty



## **Child Dedication**

Kyllian Nicholas Cardoso

*presented by Nicholas & Ana De Lima*

Meagan Diana & Miriam Daisy

*presented by Mike & Kondwani Sumani*

with John Baldwin

## **This Generation**

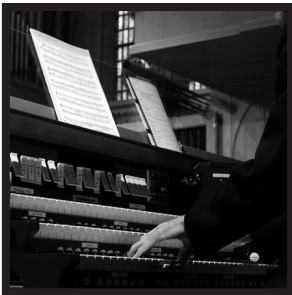
Keren Toms with Ashley Boyko

## **Invitation to Give**

*Jesus, What a Friend for Sinners*

## **Worship in Music**

*Meditation*



## **Sermon**

"The Radicals: This Generation,  
This World, This Time"—Part 5  
Dwight K. Nelson

## **Postlude**

*Allegro moderato*

WORSHIP DIRECTOR: Greg Creek; PLATFORM MANAGER: Richard Parke  
ORGANIST: Kenneth Logan; VOCALS: Mary Ratsara, Marcel Hamilton, Lillian Fullmer, Becca Puffer  
PERCUSSION: Joshua Bennett, Logan Steely; ACOUSTIC GUITAR: Morgan Steely  
BASS GUITAR: Ryan McCabe; ELECTRIC GUITAR: Kasper Haughton  
PIANO: Matthew Chacko; KEYBOARD: Matthew Shallenberger  
WORSHIP IN MUSIC: André Moncrieff, violin

# PIONEER PEOPLE

---

SUNSET TODAY: 6:28

SUNSET NEXT FRIDAY: 6:40

*For more announcements or to submit a request for a new announcement, please visit our website: [www.pmchurch.org](http://www.pmchurch.org).*

## PIONEER FAMILY LIFE

---

### **DINNER & A HEALTH FILM**

TONIGHT @ 7 PM - "The Starch Solution," by Dr. John McDougall. This film exposes common diet myths related to carbohydrates. The cost is \$2 per adult and \$1 per student, which includes supper.

### **SCRAPBOOKING FUN**

FEBRUARY 27—Our Women's Ministries invites you to our next Scrapbooking Together event tomorrow from 1–5 PM in the Commons. Bring your project to work on and enjoy the company of others. We provide refreshments, prizes and childcare.

### **CHURCH BUSINESS MEETING**

FEBRUARY 28—All are invited to the Commons for our winter business session on Monday at 7 PM to review and discuss the 2011 fiscal year budget. A summary is presented on page 14. Stop by the welcome centers for more detailed information.

### **PARENTS POTLUCK**

MARCH 5—If you are the parent or grandparent of a young child, we invite you to a potluck supper starting at 5:30 PM downstairs in PMC's Commons. Pack up the kids and a couple of dishes to share and join us! For details, contact Chris and Angi Shuler at [shuler2@](mailto:shuler2@)

[gmail.com](mailto:) or (269) 815-5055.

### **YOUTH EVENTS**

Satellite vespers FRIDAY, MARCH 4 @ Andrews Academy chapel. The theme is... "PLAY"

Youth Church: SABBATH, MARCH 5, at 11:30 am @ PMC's Youth Chapel.

### **VISITORS' DAY AT RMES**

MARCH 8—This is your chance to visit the school, make new friends, meet your teacher, and have fun! Visitors' day is free and all students who will be in 1<sup>st</sup> through 8<sup>th</sup> grades next year are invited. Call the RMES office at 471.3225 or visit [www.myRMES.org](http://www.myRMES.org) to register. We can't wait to see you there!!

### **SUSHI 101**

MARCH 27, 4 PM - Ryan Wallace, will demonstrate how to prepare vegetarian sushi, in the PMC Commons. A full vegetarian Japanese supper will be provided! The cost is \$7 per adult, \$3 per student, and children under 5 years old eat for free. FREE babysitting is provided. Register at [health@pmchurch.org](mailto:health@pmchurch.org) or call 313.2550

### **CREATION HEALTH**

MARCH 24, 6 PM - Evelyn Kissinger, RD, will be presenting on the topic "Outlook" in the PMC Commons. The cost is \$5, which includes supper.

## PIONEER FAMILY LIFE [CONT.]

---

*Thank you for your friendship, love and support over the past years. I have moved to live with my son Jack and his wife, Donna and can be reached at the following address: 101 Asphodel Dr., Dothan, Alabama 30303*

– Helen Lungu

*Thank you so much for the lovely plant you sent after the death of our mother and grandmother. WE so appreciate your love and thoughtfulness.*

– Ken & Diane Barnum,  
David & Lisa Jardine

*Thank you so very much, PMC family, for your support during my recent hospital stay. I am very grateful for the visits, cards, and prayers during my hospital stay and recovery. –Rob Barnhurst*

*Thank you Pioneer Memorial pastors and church family for your prayers, cards, plant and kind expression of sympathy during the recent loss of our loving father, Maxwell Joseph Scott.*

– Glynn & Donna-Mae Scott and family

### WE MOURN

Today we mourn with Minde Smith on the death of her father, Robert Livingstone Boothby on Wednesday, February 16. A memorial service was held at Allred Funeral Home last Sabbath. With Minde, Marty and the entire family, we look forward to Jesus' second coming. "Even so, come Lord Jesus."

---

## NOMINATING COMMITTEE // 2<sup>ND</sup> READING

---

*On Monday, February 7, the following individuals were recommended to serve on the Nominating Committee (Pioneer's bi-annual leadership selection team).*

Christon Arthur, Bruce Babienko, Dan Bacchiocchi, Karl Bailey, Rosemary Bailey, Aron Balorda, Joan Banks, Darlene Barnhurst, Rob Barnhurst, Joni Bell, Skip Bell, David Blue, Katrina Blue, Glynis Bradfield, Melissa Brodie, Laurence Burn, Celesta Burt, Ashleigh Burtnett, Jon Butler, Sari Butler, Phil Byrd, Ben Chilson, Camille Clayton, Ryan Clough, Carmen Collins, Lori Covrig, Claudia Davisson, Richard Davisson, Bonnie Dent, Emory Dent, Carol Dronen, Don Dronen, Ingrid Dumitrescu, Norma Franz, Jasmine Fraser, Troy Furst, Russell Furst, Erhard Gallos, Sara Gane, Phil Giddings IV, Sean Glassford, Melanie Goetz, Donna Habenicht, Jessie Helm, Allison Ireland, Darius Jankiewicz, Max Jardine, Carlene Johnson, Rick Jones, Karis Kang, Marcia Kilsby, Harvey Kilsby,

David Kipp, Joel Kitchen, Olivia Knott, Kathy Koudele, Wolfgang Kunze, Laren Kurtz, Mickey Kutzner, David Leffler, Judy Mackie, Pat Mauro, Ray Mayor, Fran McMullen, Karen Nash, Dave Nelson, Judy Nelson, Carlos Neumann, Joseph Njau, Audrey North, Mordecai Ongo, Richard Parke, Darlene Puymon, Vladimir Radivojevic, Alice Rasmussen, Charles Rasmussen, Becky Ray, Phil Roberts, Gayle Rowe, Brenda Schalk, Scott Schalk, Dixie Scott, Glynn Scott, Christopher Shuler, Katherine Smith, Andy Snyder, Claudia Sowler, Don Starlin, David Steen, Michael Tan, Jane Thayer, Larry Ulery, Becky VonDorpowski, Christine Wallace, Ryan Wallace, David Waller, Sandra White, Ryan Whitehead, Kevin Wilson

# REVIVAL & REFORMATION

---

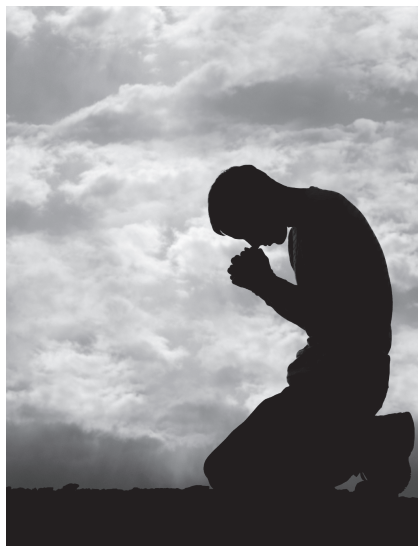


*"...all this disaster has come upon us; yet we have not made our prayer before the Lord our God, that we might turn from our iniquities and understand Your truth."*

—Daniel 9:13

## SERVANT OF GOD

There was a time in Daniel's life when he recognized that the captivity of God's people remained unchanged, even though Jeremiah's predicted seventy year time period was rapidly coming to an end. He could have considered his government duties more pressing, but Daniel was first a servant of God and then a servant of the kings in power. So Daniel studied and prayed. He later recognized three problems: (1) disasters had come but prayers were not going up regarding the disasters; (2) that iniquities were keeping God's people back; (3) that there was a lack of understanding of the truth for the time. We are surrounded by unprecedented disasters in our day. Are we praying? Are we searching our hearts to see if there is iniquity to turn from? Are we making sure we understand the truth for



our time so that we can make appropriate preparations? Join like-minded "Daniels" at House of Prayer this coming Wednesday, to lift up God's people as Daniel did in days gone by. Need Prayer? Come to the Prayer Room.

If you would like to receive special prayer after 1st service today or to share a specific request, please feel free to come to the Prayer Room (glass windows, piano side). The entrance is on the left as you exit the sanctuary towards the Youth Chapel.

# PMC OPERATING BUDGET 2011

The 2011 PMC Operating Budget will be presented for approval during a business meeting on February 28 at 7:00 PM. Detailed budget information is available at each welcome center and at the church office.

## 2011 BUDGET SUMMARY

	Budget 2011	Budget 2010	Actual 2010
Net Asset Beginning Balance	\$ 865,085	\$ 759,302	\$ 759,333

## INCOME

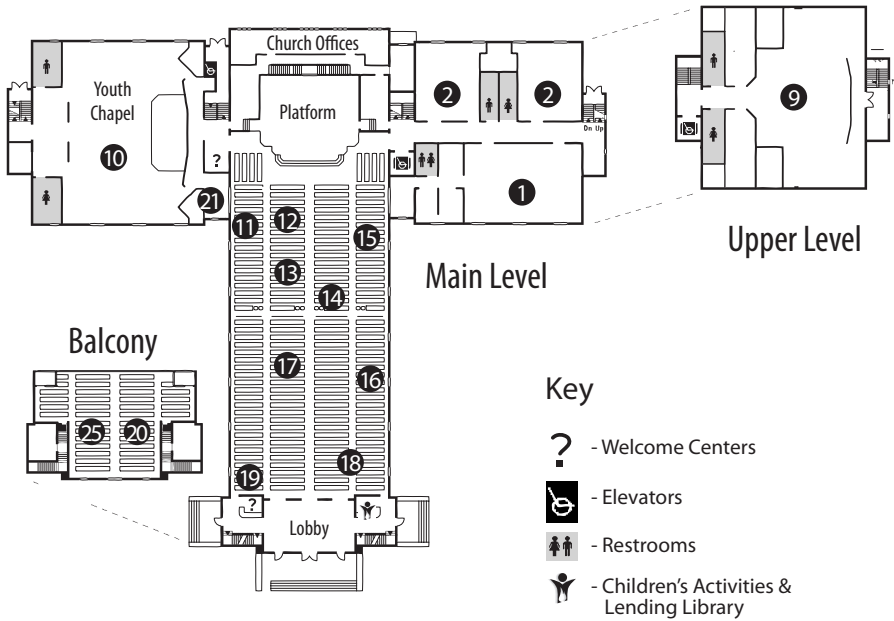
### **Church Family Finance Goals:**

Church Operating	\$ 585,000	\$ 575,000	\$ 608,016
Evangelism	131,000	114,000	116,256
Christian Education	220,921	217,572	220,921
Student Aid	60,000	60,000	53,673
Building Fund	50,000	55,000	58,143
<b>Total Family Finance Goals</b>	<b>\$1,046,921</b>	<b>\$1,021,572</b>	<b>\$1,057,009</b>
<b>Other Income</b>	<b>572,281</b>	<b>546,546</b>	<b>866,201</b>
<b>TOTAL INCOME</b>	<b>\$1,619,202</b>	<b>\$1,568,118</b>	<b>\$1,923,210</b>

## EXPENSES

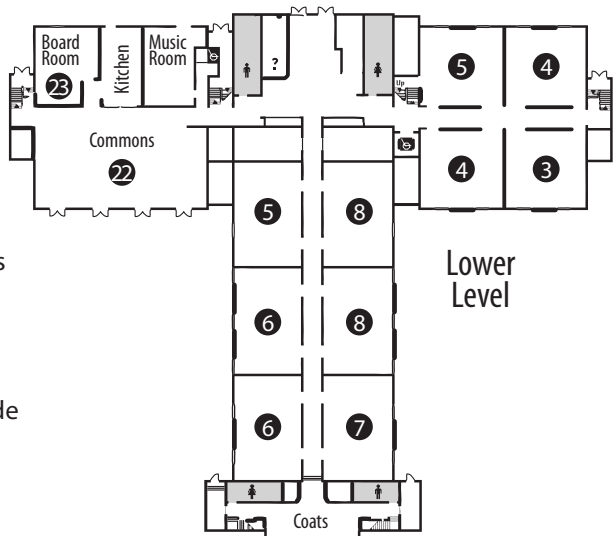
Evangelism Programs	\$ 508,978	\$ 355,124	\$ 353,624
Sabbath School	72,550	67,234	84,832
Youth/Outreach Ministries	144,972	126,655	176,836
Christian Educ./Student Aid	337,621	330,772	329,035
Church Operations	438,693	433,005	417,861
Building/Maintenance	128,064	154,905	107,045
Television/Media Ministry	123,500	256,800	282,801
Other	36,435	44,800	65,379
<b>TOTAL EXPENSES</b>	<b>\$1,790,813</b>	<b>\$1,769,295</b>	<b>\$1,817,413</b>
Net Increase (Decrease)	(\$171,611)	(\$201,177)	\$105,797
<b>NET ASSET ENDING BALANCE</b>	<b>\$ 693,474</b>	<b>\$ 558,125</b>	<b>\$ 865,130</b>

# SABBATH SCHOOL DIRECTORY



[children]

- ① Birth - 18 months
- ② 18-36 months
- ③ 3 yr olds
- ④ 4 - 5 yr olds
- ⑤ 6 yr old - 1st grade
- ⑥ 2nd/3rd grade
- ⑦ 4th grade
- ⑧ 5th/6th grade
- ⑨ Earliteen: 7th/8th grade
- ⑩ Youth: 9th-12th grade





## PIONEER CLASSES

[adult sanctuary]

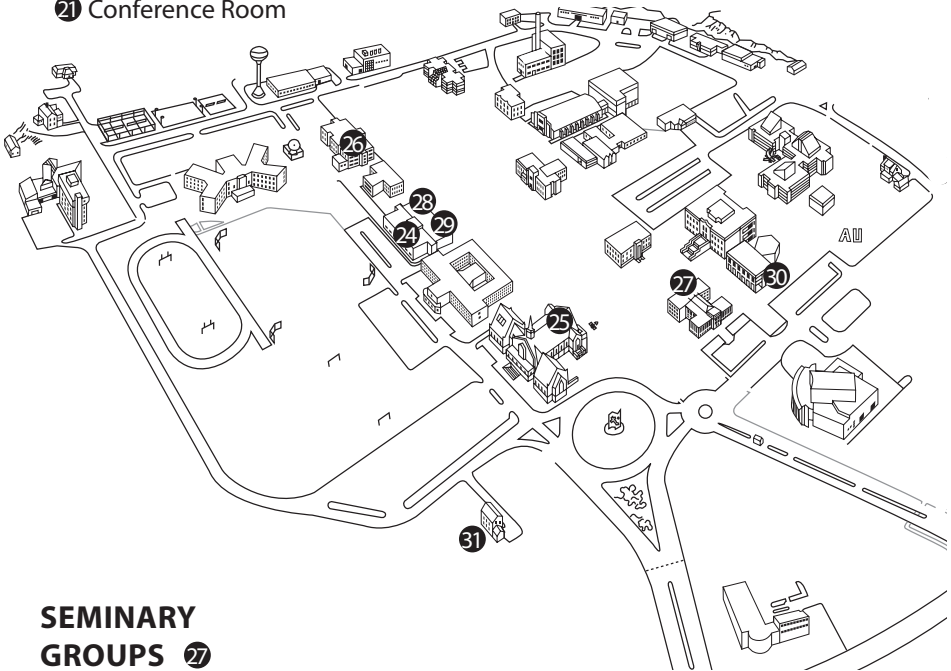
- 11 Group 1
- 12 Group 2 (Portuguese/Brazilian)
- 13 Group 3
- 14 Group 4 (Yugoslavian)
- 15 Group 5
- 16 Group 6
- 17 Group 7
- 18 Group 8
- 19 Group 9
- 20 Group 10 (Balcony)
- 21 Conference Room

[miscellaneous adult]

- 22 Something In Common
- 23 Seventh-day Adventist Beliefs

## COLLEGIATE

- 24 Encounter (Campus Ministries Office)  
Refresh (Upstairs / Cafeteria)  
H&M (Hispanic - Religion Amphitheater)
- 25 People on the Move (PMC)
- 26 Elements (Marsh Hall)



## SEMINARY GROUPS 27

- |                               |                   |
|-------------------------------|-------------------|
| N108 (Collegiate)             | N235              |
| N110                          | N310 (Russian)    |
| N120 (New Life Church Choir)  | N335 (Spanish)    |
| N135 (Living Word Fellowship) | S215 (French)     |
| N150                          | S340 (Upper Room) |
| N211 (Small group)            |                   |

## ADULT @ AU

- 28 Main Lounge
- 29 Faculty Lounge
- 30 Perspectives
- 31 Back to Basics

# CONTACTS

---

## PASTORS

[senior pastor] Dwight K. Nelson  
nelson@pmchurch.org  
471.3134

[youth ministries] Micheal Goetz  
goetz@pmchurch.org  
471.6176

[small groups] Esther Knott  
knott@pmchurch.org  
471.6153

[music] Kenneth Logan  
logan@pmchurch.org  
471.3231

[evangelism] Skip MacCarty  
maccarty@pmchurch.org  
471.6154

[children's ministry asst.] Ken Morrison  
morrison@pmchurch.org  
845.5865

[campus chaplain] Timothy Nixon  
nixon@pmchurch.org  
471.3212

[harbor of hope] Walter Rogers  
rogers@pmchurch.org  
849.9089

[pastoral care] Arne Swanson  
swanson@pmchurch.org  
471.3972

[stewardship] Sharon Terrell  
terrell@pmchurch.org  
471.6151

[campus chaplain] Keren Toms  
toms@pmchurch.org  
471.6254

[media ministries] Nick Wolfer  
wolfer@pmchurch.org  
471.3246

## STAFF

[clerk] Jackie Bikichky  
bikichky@pmchurch.org  
471.3972

[executive assistant] Sherrie Davis  
davis@pmchurch.org  
471.3134

[facilities] Sue Rappette  
rappette@pmchurch.org  
471.6565

[assistant treasurer] JoAnn Siagian  
siagian@pmchurch.org  
471.7656

[maintenance] Larry White  
white@pmchurch.org  
471.6325

## SABBATH SCHOOL

[birth - grade 1] Glenda Davidson  
bg1@pmchurch.org  
471.4170

[grade 2 - earliteen] Ray Roberts  
g2teen@pmchurch.org  
471.1810

[adult] Lois Nicholas  
adultss@pmchurch.org  
815.0001

## OUR SCHOOLS

[ruth murdoch\K-8] David Waller  
waller@andrews.edu  
471.3225

[andrews academy\9-12] Cleon White  
whitec@andrews.edu  
471.3148

[andrews university]  
enroll@andrews.edu  
471.7771 / 800.253.2874

## MINISTRIES

[adventurers] Kathy Capps  
adventurers@pmchurch.org  
815.5090

[deacons] Scott Schalk  
deacons@pmchurch.org  
208.1933

[deaconesses] Alice Rasmussen  
deaconesses@pmchurch.org  
471.1246

[elders] Russell & Cynthia Burrill  
elders@pmchurch.org  
473.3738

[health] Christine Wallace  
health@pmchurch.org

[pathfinders] Joe Capps  
pathfinders@pmchurch.org  
815.5090

[public address] Joel Kitchen  
audio@pmchurch.org

[small groups] Joni Bell  
smallgroups@pmchurch.org  
815.4739

## PMCHURCH MEDIA

### ONLINE

[www.pmchurch.org](http://www.pmchurch.org)  
[www.pmchurch.tv](http://www.pmchurch.tv)

### RADIO

WAUS - 90.7 FM  
*Sabbath 11:30 a.m.*

### CMRadio

[www.andrews.edu/cm/cmradio](http://www.andrews.edu/cm/cmradio)  
*Live Stream - 11:30 a.m. service*

### LIVE VIDEO STREAMING

11:30 AM — [www.pmchurch.tv](http://www.pmchurch.tv)

### TELEVISION

WHME TV 46  
*Sunday noon & midnight*

SAFE TV, HOPE CHANNEL & 3ABN  
*See websites for local listings*  
[www.safetv.org](http://www.safetv.org)  
[www.hopetv.org](http://www.hopetv.org)  
[www.3abntv.org](http://www.3abntv.org)



8655 UNIVERSITY BOULEVARD,  
BERRIEN SPRINGS, MI 49103  
PHONE\_269.471.3133 – FAX\_269.471.6152

## HOUSE OF PRAYER

---

WEDNESDAY @ 7 PM, SANCTUARY

This next Wednesday we will study another Radical, the Reformer Zwingli, as we continue our winter study, "The War You're In." Through the apocalyptic classic, *The Great Controversy*, we are exploring spiritual warfare strategies that offer God's winning hand for your daily battle. Wednesday at 7 PM in the Pioneer sanctuary. Co-curricular credit for university students.

## COMING SOON

---

### 3.5 \ DWIGHT K. NELSON

"The Radicals: This Generation,  
This World, This Time" — Part 6

### 3.12 \ RON CLOUZET & MICHAEL HASEL

"Astonishing Discoveries in  
the Land of the Bible"

